

# AUTHOR INDEX

November 1981

- Adams, J., 4720  
 Adams, J. D., 4305  
 Alarie, Y., 4489  
 Allen, L. M., 4547  
 Altman, S. A., 4559  
 Ambrogio, C., 4535  
 Anagnou, J., 4737  
 Anderson, M. W., 4309  
 Anvret, M., 4226, 4237  
 Arlin, Z., 4335  
 Ashley, M. P., 4499
- Bachur, N. R., 4559  
 Bailleul, B., 4559  
 Barnes, N., 4226  
 Barnett, P., 4466  
 Bateman, J. R., 4399  
 Batzinger, R. P., 4368  
 Beach, J. L., 4354  
 Beams, F. A., 4458  
 Becker, J. H., 4512  
 Bedenko, V., 4341  
 Bennett, S. J., 4354  
 Bhawan, J., 4248  
 Björkholm, M., 4292  
 Blatt, J., 4508  
 Blechman, W. J., 4529  
 Bogenmann, E., 4613  
 Boger, E., 4341  
 Boroujerdi, M., 4309  
 Bourgeois, S., 4540  
 Bresnick, E., 4408  
 Brewer, C. F., 4471  
 Brodeur, G. M., 4678  
 Brosman, S., 4324  
 Brundage, R. G., 4629  
 Bugelski, P. J., 4606  
 Businco, L., 4284
- Callihan, T., 4280  
 Caputo, A., 4681  
 Carchman, R. A., 4523  
 Ceriani, R., 4637  
 Chabner, B., 4432  
 Chamness, G. C., 4644  
 Chan, T., 4579  
 Chello, P. L., 4441  
 Chen, K. Y., 4579  
 Cheng, M., 4489  
 Chessels, J., 4284  
 Chlebowski, R. T., 4399  
 Clarkson, B. D., 4335  
 Clubb, K. J., 4547  
 Cohen, M., 4432  
 Collins, R., 4226, 4237  
 Conner, M. K., 4489  
 Cook, J. S., 4512  
 Cornet, J. A., 4226  
 Cruze, F., 4226
- Darzynkiewicz, Z., 4566  
 DasGupta, B. R., 4600  
 D'Atri, S., 4681  
 Deen, D. F., 4404
- DeFlorio, D., Jr., 4248  
 De Martino, C., 4681  
 de-Thé, G. B., 4738  
 Dorey, F., 4324  
 Dougherty, T. J., 4606
- Earhart, R. H., 4368  
 Edwards, D. P., 4644  
 Egues, M. C., 4577  
 Epstein, M. A., 4216  
 Ernberg, I., 4210, 4284, 4292  
 Evans, R., 4737
- Fahey, J. L., 4324  
 Floridi, A., 4661  
 Forst, C. F., 4458  
 Fox, T. R., 4391  
 Frenkel, E. P., 4466  
 Fridland, A., 4478  
 Friedman, E. A., 4588  
 Frizzera, G., 4253, 4262  
 Fukuda, M., 4621  
 Fysh, J. M., 4346
- Gaffer, S. A., 4354  
 Galiègue, S., 4559  
 Gallo, R. C., 4738  
 Garbisa, S., 4629  
 Garcia, M., 4720  
 Gasic, G., 4535  
 Gaskell, S. J., 4693  
 Glassberg, M., 4466  
 Glomstein, A., 4284  
 Gajl-Peczalska, K. J., 4262  
 Gartner, J. G., 4243  
 Gasson, J. C., 4540  
 Glaubiger, D. L., 4554  
 Glazer, R. I., 4508  
 Godfrey, T., 4399  
 Goldenberg, D. M., 4354  
 Goldfarb, R. H., 4629  
 Goldin, B. R., 4415  
 Gonzales, F., 4613  
 Gorbach, S. L., 4415  
 Goutas, L. J., 4447  
 Green, A. A., 4679  
 Gregory, M. E., 4415  
 Griffiths, K., 4693  
 Grimm, E. A., 4420  
 Guengerich, F. P., 4391
- Hackett, A. J., 4637  
 Hanto, D., 4237  
 Hanto, D. W., 4253, 4262  
 Harper, M. E., 4693  
 Hayes, F. A., 4678  
 Hecht, S. S., 4341  
 Henle, G., 4222, 4284, 4292  
 Henle, W., 4222, 4280, 4284, 4292  
 Heppner, G. H., 4378  
 Herrod, H. G., 4280  
 Hervatin, S. J., 4426  
 Hestorff, R., 4399
- Hida, K., 4698  
 Hoffmann, D., 4305, 4341  
 Holahan, K. P., 4262  
 Holcenberg, J. S., 4508, 4554  
 Holder, G. M., 4408  
 Holland, J. F., 4335  
 Hori, K., 4722  
 Horwitz, S. B., 4471  
 Hoshino, T., 4404  
 Huet-Minkowski, M., 4540  
 Hutt-Fletcher, L. M., 4248
- Iida, H., 4722  
 Ip, C., 4386  
 Ishihara, M., 4710  
 Ito, Y., 4738
- Jacobs, M. M., 4458  
 Johansson, B., 4292  
 Joncas, J. H., 4243  
 Jones, P. A., 4613
- Kakizoe, T., 4702  
 Kamataki, T., 4732  
 Kaneko, Y., 4577  
 Kano, Y., 4698  
 Kapp, D. S., 4331  
 Karpatkin, S., 4535  
 Katayama, S., 4341  
 Kato, R., 4732  
 Kato, Y., 4499  
 Kaufman, D. G., 4653  
 Kaufmann, W. K., 4653  
 Kawachi, T., 4702  
 Kelleher, L. E., 4447  
 Kemp, H. A., 4693  
 Kessler, F. K., 4523  
 Kiger, N., 4706  
 Kim, K., 4529  
 King, C. M., 4346  
 Kinjo, M., 4710  
 Klein, E., 4210  
 Klein, G., 4209, 4226, 4237, 4248, 4253, 4284, 4292, 4302  
 Klein-Szanto, A. J. P., 4437  
 Klöppel, G., 4715  
 Knight, J., 4226  
 Koch-Weser, J., 4426  
 Kohga, S., 4710  
 Komatsu, H., 4702  
 Koziner, B., 4335  
 Kubota, T., 4698  
 Kronstrom, H., 4706
- Lan, S., 4637  
 Lane, B. P., 4687  
 Lang, J. E., 4399  
 Laskin, D. L., 4523  
 Laskin, J. D., 4523  
 Lee, M-S., 4346  
 Leopold, W. R., 4368  
 Levin, V. A., 4426  
 LaVoie, E. J., 4341  
 Lehr, R. E., 4341

- .iao, S. A., 4248  
 .ie, S., 4284  
 Lindquist, L. L., 4262  
 Liotta, L. A., 4629  
 Lippman, M., 4432  
 Lipton, J., 4508  
 Liu, A. Y-C., 4579  
 Lombardi, P. E., 4415  
 Look, A. T., 4280  
 Lord, P. F., 4331  
 Lotze, M. T., 4420  
 Loucheux-Lefebvre, M-H., 4559  
 Luce, J., 4399  
 Lynch, M. A., 4415  
  
 Manohar, V., 4499  
 Marcante, M. L., 4681  
 Marton, L. J., 4426  
 Mason, K. A., 4453  
 Mason, P. S., 4391  
 Masucci, G., 4210, 4284, 4292  
 Masucci, M. G., 4210, 4284, 4292  
 Mayhew, J. W., 4415  
 Mazumder, A., 4420  
 McCann, P. P., 4426  
 McGuire, W. L., 4644  
 McKenna, R. W., 4262  
 Meck, R. A., 4547  
 Melamed, M., 4566  
 Mellstedt, H., 4292  
 Mendelsohn, N., 4335  
 Mercer, W. D., 4644  
 Miller, B. E., 4378  
 Miller, E. C., 4368  
 Miller, F. R., 4378  
 Miller, J. A., 4368  
 Misko, I. S., 4216  
 Mitchell, V. D., 4361  
 Moccio, D. M., 4447  
 Morrow, D., 4331  
 Moss, D. J., 4216  
 Muralidharan, K., 4248  
 Murphy, S. B., 4508  
  
 Naegele, R. F., 4280  
 Najarian, J. S., 4253  
 Neustein, H. B., 4613  
 Neuwelt, E. A., 4466  
 Nijijima, T., 4714  
  
 Olsson, L., 4706  
 Ogawa, H., 4710  
 Orr, G. A., 4471  
  
 Pachman, L., 4226  
 Pagano, J. S., 4243  
 Pagel, M., 4466  
 Paggi, M. G., 4681  
 Paquin, L., 4248  
 Pardee, A. B., 4529  
 Pariza, M. W., 4600  
 Parkanyi, C., 4740  
 Pearlstein, E., 4535  
 Pearson, G., 4284, 4292  
 Pierce, G. B., 4742  
 Pike, A. W., 4693  
  
 Pincott, J., 4226  
 Pingaro, L., 4341  
 Plapinger, L., 4667  
 Politzer, I. R., 4740  
 Politzer, P., 4740  
 Pope, J. H., 4216  
 Poplack, D. G., 4554  
 Poplack, G. G., 4508  
 Porter, C. W., 4606  
 Poser, R. G., 4441  
 Pracht, B., 4715  
 Pritchard, J., 4226  
 Prival, M. J., 4361  
 Purtilo, D. T., 4209, 4226, 4237, 4248, 4253, 4284, 4302  
  
 Queen, K., 4693  
  
 Raffa, P., 4248  
 Rappaport, P., 4499  
 Read, G. F., 4693  
 Reece, E. R., 4243  
 Reichert, C., 4432  
 Reid, B. O., 4453  
 Reynolds, R., 4399  
 Riad-Fahmy, D., 4693  
 Riccardi, R., 4554  
 Rice, J. M., 4653  
 Rich, K., 4226  
 Rickinson, A. B., 4216  
 Riddle, V. G. H., 4529  
 Rivera, G., 4508  
 Rochefort, H., 4720  
 Rosai, J., 4262  
 Roselle, D., 4432  
 Rosenberg, S. A., 4420  
 Ross, D. D., 4559  
 Rowe, M., 4216  
 Rowley, J. D., 4577  
 Roy, S. N., 4471  
 Rückert, K., 4715  
 Ryden, V. M. J., 4399  
  
 Saccone, G. T. P., 4600  
 Saemundsen, A. K., 4226, 4237, 4248, 4253  
 Sakamoto, K., 4226, 4237, 4248, 4253, 4284  
 Sakamoto, S., 4698  
 Sakurai, Y., 4722  
 Sakuraya, K., 4698  
 Sallan, S., 4508  
 Sandstedt, B., 4226  
 Sano, Y., 4404  
 Sardella, D. J., 4341  
 Sarup, J., 4478  
 Schrecker, A. W., 4559  
 Seemayer, T. A., 4243  
 Sieff, C., 4226, 4284  
 Shirai, T., 4346  
 Sibley, R. K., 4262  
 Siegal, G. P., 4629  
 Silvestrini, B., 4681  
 Simmons, R., 4237  
 Simmons, R. L., 4253  
 Sirotnak, F. M., 4441, 4447  
  
 Sjoerdsma, A., 4426  
 Slaga, T. J., 4437  
 Sloper, C., 4226  
 Smith, H. S., 4637  
 Snyder, L. M., 4248  
 Sonnenschein, C., 4742  
 Spina, C. A., 4324  
 Stampfer, M. R., 4637  
 Stott, W. T., 4391  
 Stout, J. T., 4583  
 Strausser, J. L., 4420  
 Suda, K., 4698  
 Sugimoto, T., 4499  
 Sugimura, T., 4702  
 Sullivan, C. E., 4415  
 Sullivan, J. L., 4226, 4237, 4253  
 Svedmyr, E., 4210, 4292  
 Svet-Moldavsky, G. J., 4335  
 Svet-Moldavskaya, I. A., 4335  
 Synnerholm, A-C., 4226, 4237  
 Szigeti, R., 4210, 4284, 4292  
  
 Takaku, F., 4698  
 Tamarkin, L., 4432  
 Tanaka, K., 4710  
 Tanaka, N., 4710  
 Taylor, R. F., 4316  
 Teague, L. A., 4316  
 Tennyson, G. S., 4687  
 Terranova, V. P., 4629  
 Tierney, B., 4408  
 Toth, S. R., 4727  
 Traganos, F., 4566  
 Troll, W., 4382  
 Tsiatis, A. A., 4678  
 Tsukagoshi, S., 4722  
 Tsuruo, T., 4722  
  
 Vaught, J. B., 4346  
 Venner, P. M., 4508  
 Verhoef, V., 4478  
 Vescera, C., 4324  
  
 Wallace, L. E., 4216  
 Watanabe, P. G., 4391  
 Weiner, J. M., 4399  
 Weinstein, I. B., 4523  
 Wenk, M. L., 4653  
 West, J., 4453  
 Wiesner, R., 4382  
 Williams, D. L., 4678  
 Williams, K. J., 4678  
 Williams, M. E., 4404  
 Wilson, A. G. E., 4309  
 Withers, H. R., 4453  
 Wood, J. H., 4554  
 Wu, Y. T., 4210  
  
 Yamazoe, Y., 4732  
 Yang, J. P. S., 4248  
 Yesair, D. W., 4316  
 Yunis, A. A., 4547  
  
 Zbar, B., 4499  
 Zinzar, S. N., 4335

Statement of Ownership, Management and Circulation required by the Act of August 12, 1970; Section 3685, Title 39, United States Code

1. *Date of Filing:* October 1, 1981.
2. *Title of Publication:* CANCER RESEARCH.
3. *Frequency of Issue:* Monthly.
4. *Location of Known Office of Publication:* 428 East Preston Street, Baltimore, Maryland 21202.
5. *Location of the Headquarters or General Business Offices of Publisher:* 428 East Preston Street, Baltimore, Maryland 21202.
6. *Publisher:* The Williams & Wilkins Company, 428 East Preston Street, Baltimore, Maryland 21202.

*Editor:* Dr. Peter N. Magee, Fels Research Institute, Temple University School of Medicine, Philadelphia, Pennsylvania 19140.

*Managing Editor:* Miss Margaret Foti, Fels Research Institute, Temple University School of Medicine, Philadelphia, Pennsylvania 19140.

7. *Owners:* (If owned by a corporation, its name and address must be stated and also immediately thereunder the names and addresses of stockholders owning or holding 1 percent or more of total amount of stock. If not owned by a corporation, the names and addresses of the individual owners must be given. If owned by a partnership or other unincorporated firm, its name and address, as well as that of each individual, must be given.) Cancer Research, Inc., 1275 York Avenue, New York, NY 10021. No stockholders.

8. *Known bondholders, mortgagees and other security holders owning or holding 1 percent or more of total amount of bonds, mortgages or other securities are:* None.

9. Paragraphs 7 and 8 include, in cases where the stockholder or security holder appears upon the books of the company as trustee or in any other fiduciary relation, the name of the person or corporation for whom such trustee is acting, also the statements in the two paragraphs show the affiant's full knowledge and belief as to the circumstances and conditions under which stockholders and security holders who do not appear upon the books of the company as trustees, hold stock and securities in a capacity other than that of a bona fide owner. Names and addresses of individuals who are stockholders of a corporation which itself is a stockholder or holder of bonds, mortgages or other securities of the publishing corporation have been included in Paragraphs 7 and 8 when the interest of such individuals are equivalent to 1 percent or more of the total amount of the stock or securities of the publishing corporation.

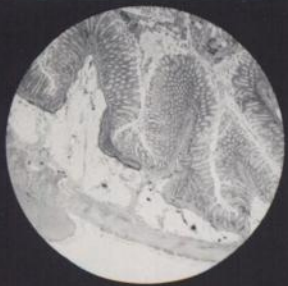
	(a) <sup>a</sup>	(b) <sup>b</sup>
10. A. Total No. of copies printed (net press-run)	6821	6835
B. Paid circulation		
B. 1. To term subscribers by mail, carrier delivery or by other means	5555	5768
2. Sales through agents, news dealers or otherwise	none	none
C. Total paid circulation	5555	5768
D. Free distribution (including samples), by mail, carrier delivery or by other means	67	64
E. Total No of copies distributed	5622	5832
F. 1. Copies not distributed	1199	1003
2. Returns from news Agents	none	none
G. Total	6821	6835

<sup>a</sup> Average No. of copies for each issue during preceding months.

<sup>b</sup> Single issue nearest to filing date.

I certify that the statements made by me above are correct and complete. (Signed) Robert K. Startt, Jr., Vice President.

# NIKON VISIONS



## NIKON OPTIPHOT. THE EASY-TO-USE PHOTOMICROSCOPE WITH TOTAL RESEARCH CAPABILITIES.

Colon specimen photographed with Nikon CF 2x plan apochromat, CF 5x photo eyepiece.

### INSTRUMENTATION

Nikon Optiphot microscope equipped with HFM Microflex photomicrography system.

### SIGNIFICANCE

Through design innovations Nikon has produced a complete microscope and camera system capable of delivering consistently accurate photomicrographs with maximum speed and convenience.

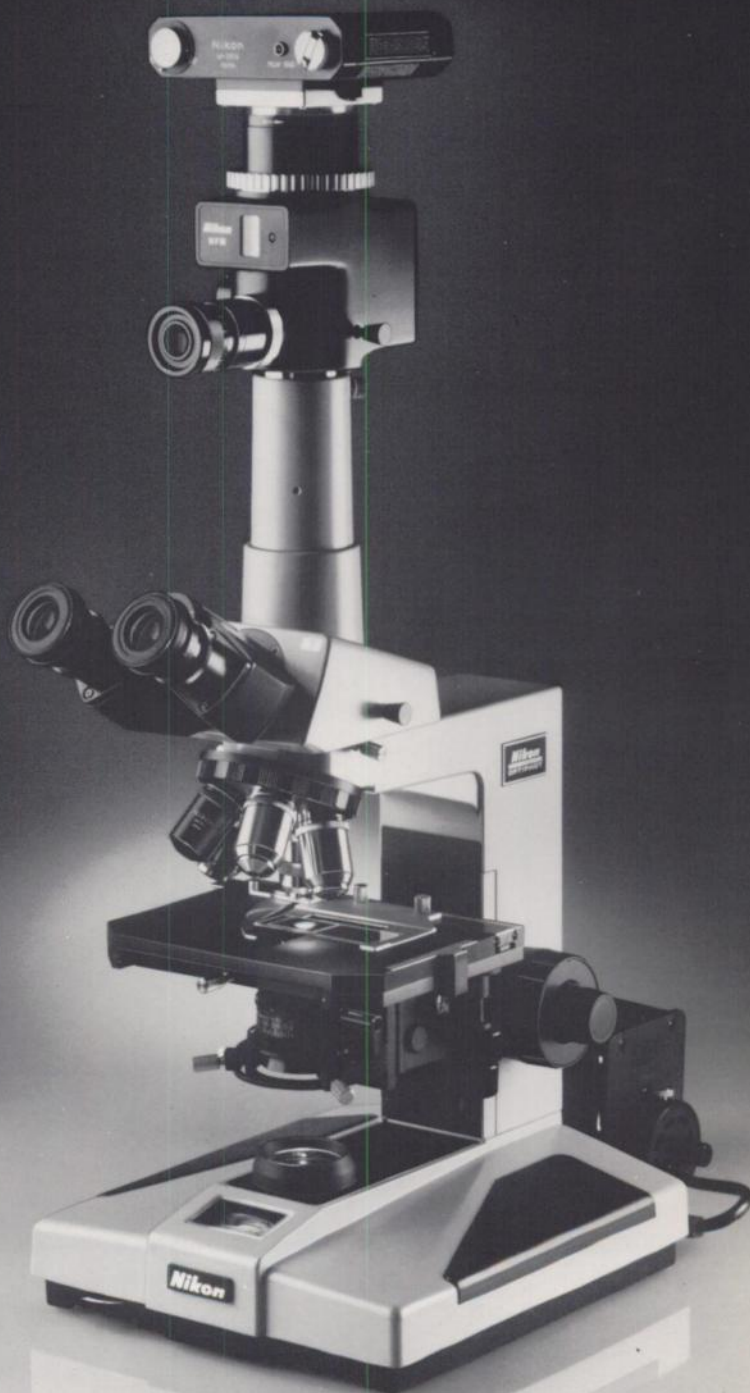
### SPECIFICS

The Nikon Optiphot combines exclusive CF optics for images with full edge-to-edge sharpness, remarkable contrast and superior resolution with a totally new mechanical design. The massive base and rigid stand eliminate any vibration, while a constant color temperature 50 watt halogen Koehler illumination system provides enough light for any requirement. Images snap into crisp, sure focus with the ultra-precise focusing mechanism.

The HFM Microflex camera system consistently captures the superb images delivered by the Optiphot. It features totally automatic, computer-controlled exposure selection, electronic shutter and motorized film advance. The system can be adapted for Polaroid® or large format photography.

Extend your vision with the Nikon Optiphot. Write: Nikon Visions, Nikon Inc. Instrument Division, 623 Stewart Avenue, Garden City, N.Y. 11530 (516) 222-0200.

**Nikon**  
Extending Man's Vision



---

American Cancer Society

**NATIONAL CONFERENCE  
ON GASTROINTESTINAL  
CANCER — 1981**

---

---

A national conference on gastrointestinal cancer, sponsored by the American Cancer Society, will be held December 8 through 10, 1981, at Fontainebleau Hilton Hotel, Miami Beach, Florida. The objective of the conference is to provide the general medical community with the advances made in the detection, diagnosis, and treatment of gastrointestinal cancer, and the new information concerning etiology and possible preventive measures. Attendance is open to members of the medical and health-related professions. There is no registration fee, but advance registration is requested. This continuing medical education activity meets criteria for 13 hours in Category 1 of the Physician's Recognition Award of the American Medical Association. Program is acceptable for 13 prescribed hours by the American Academy of Family Physicians and is eligible for 13 credit hours in Category 2-D of the American Osteopathic Association. For further information, write to:

**Nicholas G. Bottiglieri, M.D.**  
**American Cancer Society**  
**National Conference—Gastrointestinal Cancer—1981**  
**777 Third Avenue**  
**New York, New York 10017**

---

---