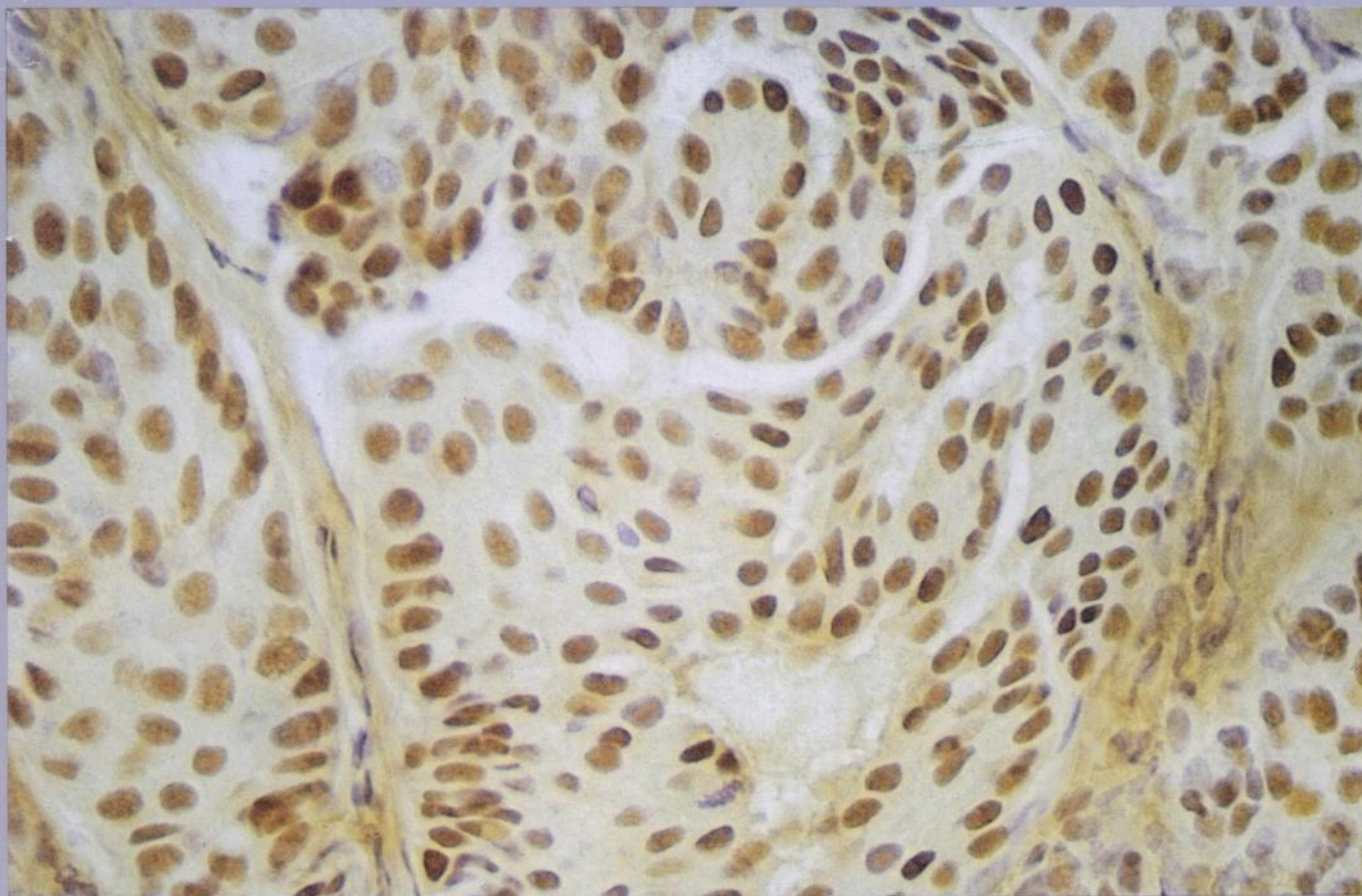




Cancer Research Supplement

VOLUME 46 • NO. 8 CNREA 8 • PP 4231s-4313s

August 1986



Symposium on
**ESTROGEN RECEPTOR DETERMINATION
WITH MONOCLONAL ANTIBODIES**

Notice to Members of the American Association for Cancer Research

Officers for 1986-1987

President: Alan C. Sartorelli, Yale University School of Medicine, 333 Cedar Street, New Haven, CT 06510

Vice President: Enrico Mihich, Roswell Park Memorial Institute, 666 Elm Street, Buffalo, NY 14263

Secretary-Treasurer: Robert E. Handschumacher, Yale University School of Medicine, 333 Cedar Street, New Haven, CT 06510

Executive Director: Margaret Foti, Temple University School of Medicine, West Building, Room 301, Philadelphia, PA 19140

Annual Dues

The annual dues of active members of the American Association for Cancer Research are \$85.00 and they include a subscription to the journal *Cancer Research*. The regular subscription price of *Cancer Research* for members of the Association is \$60.00 per annual volume. Corresponding members of the Association should add \$30.00 to this rate to offset postage costs. Payment of dues and changes of address of members of the Association should be sent promptly to the office of the American Association for Cancer Research, c/o Margaret Foti, Executive Director, American Association for Cancer Research, Temple University School of Medicine, West Building, Room 301, Philadelphia, Pa. 19140 (215-221-4565).

Back Issues and Single Copy Sales of the Journal

Copies of back stock of the journal *Cancer Research* may be ordered from Waverly Press, Inc. As long as supplies permit, single copies of *Cancer Research* will be sold by this company at \$20.00 per copy for regular issues and \$20.00 per copy for Supplement issues which contain material from conferences on topics related to cancer. The annual *Proceedings of the American Association for Cancer Research* is available at \$20.00 per copy. Orders outside the U. S. and Canada add \$2.00/copy to offset postage costs.

Advertisements in *Cancer Research*

Advertisement insertion orders and copy must be received 60 days prior to the month of issue in which the advertisement is to be published. The journal is mailed on or about the 20th of the month preceding the month of issue. Inquiries about advertising should be directed to: Donald H. Nichols, Vice President, Journal Sales, Waverly Press, Inc., 428 E. Preston Street, Baltimore, Maryland 21202. Telephone: 301/528-4280.

Historical Cover Themes

Readers are invited to submit themes (events, persons, institutions) for consideration for the illustrated covers of *Cancer Research*. Correspondence regarding suggested cover themes, or other matters regarding covers, should be addressed to the Cover Editor, *Cancer Research* Editorial Office.

Submission of Manuscripts

Manuscripts should be sent to the attention of: Dr. Peter N. Magee, Editor, *Cancer Research*, Fels Research Institute, Temple University School of Medicine, Philadelphia, PA 19140 (215-221-4720). If accepted, they will be listed under one of ten categories in the Table of Contents. Please specify in a covering letter which category applies to your submission: Basic Sciences section—biochemistry and biophysics, biology and genetics, carcinogenesis, endocrinology, immunology, molecular biology, preclinical pharmacology and experimental therapeutics, virology; Clinical Investigations section—clinical studies, epidemiological studies. (Final categorization in the Table of Contents is at the discretion of the Editor.) Consult the "Instructions for Authors" printed in the January issue of the journal for other submission requirements. Reprints of the "Instructions" are available upon request.

Manuscript Processing Fee

Journal policy requires that a manuscript processing fee of \$75.00 be assessed for each paper to defray the expenses incurred in the editorial review process. An invoice is sent to the author upon receipt of the manuscript. Review to determine acceptability will not be delayed pending payment of this fee. Exception: If an author resubmits a manuscript that our Editors previously found unacceptable for publication, it is journal policy to consider it a new submission, assign it a new manuscript number, and charge the author another \$75.00 handling fee to cover the cost of review. The manuscript will *not* be reviewed until the author agrees in writing to this policy.

Page Charges

Accepted manuscripts will be published with the understanding that the author(s) will pay a charge of \$40.00 per printed page. Under exceptional circumstances, when no source of grant or other support exists, the author(s) may apply to Dr. Peter N. Magee, Editor, *at the time of submission*, for a waiver of the page charges. All such applications must be countersigned by an appropriate institutional official stating that no funds are available for the payment of page charges.

Copyright and Copyright Clearance Center

The Copyright Revision Act (PL 94-553), which became effective January 1, 1978, states that the copyright of a work is vested in the author from the moment of creation. Therefore, all authors who wish to publish in *Cancer Research* must formally transfer copyright to the proprietor of the journal, Cancer Research, Inc. It is understood by this transfer that the authors relinquish all exclusive rights of copyright ownership, including the rights of reproduction, derivation, distribution, sale, and display.

Authors who prepared their articles as part of their official duties as employees of the U. S. Federal Government are not required to transfer copyright to Cancer Research, Inc., since these articles are considered to be in the public domain. However, it is necessary for these authors to sign the appropriate section of the transfer form. In the case of articles supported by federal grants or contracts, copyright transfer to Cancer Research, Inc., is required. The federal government may retain a nonexclusive license to publish or republish such material.

The duly authorized agent of a commercial firm or commissioning organization must sign the transfer form if the author prepared the article as part of his or her official duties as an employee.

Appropriate forms for transfer of copyright will be sent routinely with acknowledgment of receipt of manuscripts for review. They may also be requested from the *Cancer Research* Editorial Office. The journal will not publish a paper unless the form is properly completed and signed.

Copies of articles for which *Cancer Research* owns the copyright may be made for personal or internal use, provided that the copier pay the per-copy fee of \$2.00 through the Copyright Clearance Center, Inc. This Center is a nonprofit organization through which individuals and institutions may reimburse a copyright owner for photocopying journal articles beyond what is defined as "fair use" in Sections 107 and 108 of the Copyright Revision Act of 1978.

Those who wish to photocopy *Cancer Research* articles may report the number of copies they have made, together with the fee code 0008-5472/86 \$02.00, to: Copyright Clearance Center, Inc., 21 Congress St., Salem, Mass. 01970. Remittances may be sent to the Center at the time of reporting or the Center will bill the user on a monthly basis. Deposit accounts and prepayment plans may also be arranged.

Between June 1978 and August 1983, a fee code appeared on the first page of all articles for which *Cancer Research* owned the copyright. For those issues, it is understood that any articles which did not carry this code are in the public domain.

Cancer Research is abstracted or indexed in *Biological Abstracts*, *Chemical Abstracts*, *Index Medicus*, *Science Citation Index*, and by the *International Cancer Research Data Bank*.

No responsibility is accepted by the Editors, by Cancer Research, Inc., by the American Association for Cancer Research, Inc., or by Waverly Press, Inc. for the opinions expressed by contributors or for the content of the advertisements.

Cancer Research (ISSN 0008-5472) is published monthly for \$60 per year (for members of the American Association for Cancer Research) or \$120 and \$210 per year (for nonmembers) by Cancer Research, Inc. Second-class postage paid at Baltimore, Md. and additional mailing offices. POSTMASTER: Send address changes to *Cancer Research*, c/o Waverly Press, Inc., 428 E. Preston Street, Baltimore, Md. 21202.

Copyright 1986 by Cancer Research, Inc.