

July 1, 1992

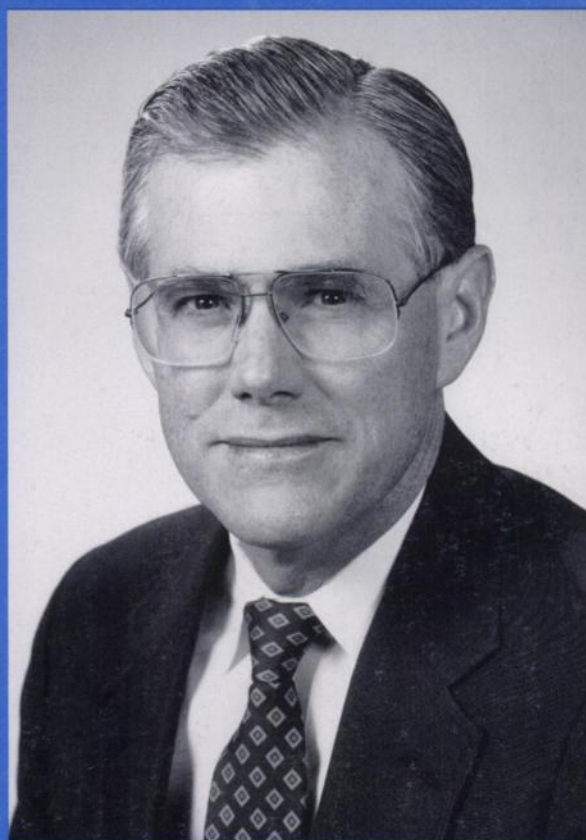
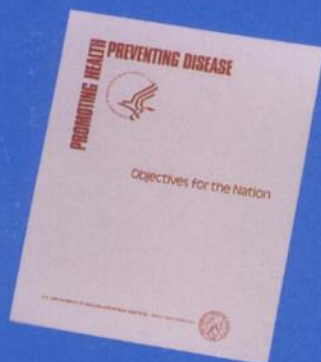
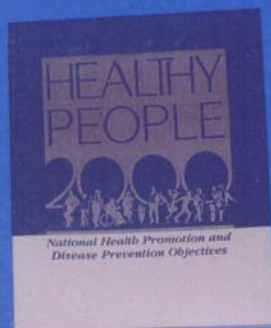
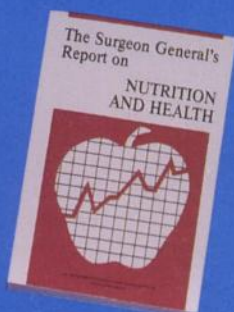


Cancer Research

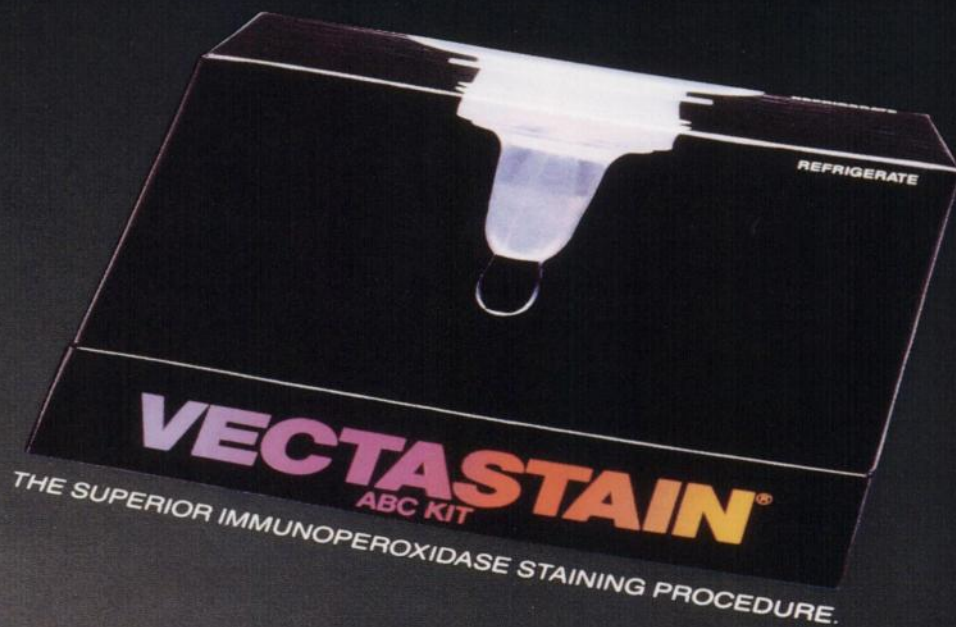
OFFICIAL JOURNAL OF THE AMERICAN ASSOCIATION FOR CANCER RESEARCH

VOLUME 52 • NO. 13 • PP 3515-3830

ISSN 0008-5472 • CNREA 8



We're the
ABC
people.



More than 10 years ago we introduced the original VECTASTAIN® ABC kits which rapidly became the standard for immunohistochemical staining procedures. Development of glucose oxidase and alkaline phosphatase ABC kits followed. Continued commitment to advancing the technique led to the ultra-sensitive VECTASTAIN® *Elite* ABC series. These patented ABC systems are now widely used not only for immunohistochemistry, but also for transfer blots, *in situ* hybridization and enzyme immunoassays. This new VECTASTAIN® guide demonstrates the advantages of the ABC method while graphically describing these applications. Call for your copy today. Our people will immediately respond.



VECTOR LABORATORIES, INC.

30 Ingold Road, Burlingame, CA 94010 (415) 697-3600 Fax (415) 697-0339

VECTOR LABS, LTD.

16 Wulfric Square, Bretton, Peterborough, PE3 8RF England Tel (0733) 265530 Fax (0733) 263048

© 1992, Vector Laboratories, Inc.

AACR SPECIAL CONFERENCE IN CANCER RESEARCH

Normal and Neoplastic Growth and Development



October 18-22, 1992
Chatham Bars Inn, Chatham (Cape Cod), Massachusetts

CONFERENCE CHAIRPERSON

Arnold J. Levine / Princeton, NJ

PROGRAM COMMITTEE

Edward E. Harlow / Charlestown, MA

Peter M. Howley / Bethesda, MD

David M. Livingston / Boston, MA

SCIENTIFIC PROGRAM

Keynote Address

Robert A. Weinberg / Cambridge, MA

Hematopoiesis I

Irving L. Weissman / Stanford, CA

Charles J. Sherr / Memphis, TN

Alan Bernstein / Toronto, Canada

Elliott D. Kieff / Boston, MA

Hematopoiesis II

Ihor Lemischka / Princeton, NJ

Bruce Mayer / New York, NY

Irvin S. Chen / Los Angeles, CA

Flossie Wong-Staal / La Jolla, CA

Hematopoiesis III

Irwin D. Bernstein / Seattle, WA

Jerry M. Adams / Melbourne, Australia

Joseph B. Bolen / Princeton, NJ

Anton Berns / Amsterdam, The Netherlands

DNA Tumor Viruses

Peter M. Howley / Bethesda, MD

Don Ganem / San Francisco, CA

Joseph R. Nevins / Durham, NC

Sara A. Courtneidge / Heidelberg, Germany

Colon Cancer

Arnold J. Levine / Princeton, NJ

Eric R. Fearon / Baltimore, MD

Steven Powell / Baltimore, MD

Frank McCormick / Emeryville, CA

Myogenesis

Stephen J. Tapscott / Seattle, WA

Peter K. Vogt / Los Angeles, CA

Webster K. Cavenee / La Jolla, CA

Tumor Suppressor Genes

Edward E. Harlow / Charlestown, MA

David M. Livingston / Boston, MA

David E. Housman / Cambridge, MA

Carol L. Prives / New York, NY

Information and Application Forms

American Association for Cancer Research
Public Ledger Building
620 Chestnut Street, Suite 816
Philadelphia, PA 19106-3483

215-440-9300 215-440-9313 (FAX)



AMERICAN ASSOCIATION FOR CANCER RESEARCH SCIENTIFIC CONFERENCES: 1992-1994

SEPTEMBER 23-26, 1992

***Molecular and Biochemical
Methods in Cancer Epidemiology
and Prevention***

Chairperson: David Schottenfeld,
Ann Arbor, MI
The Registry Resort, Naples, FL

OCTOBER 18-22, 1992

***Normal and Neoplastic Growth and
Development***

Chairperson: Arnold J. Levine, Princeton, NJ
Chatham Bars Inn, Chatham (Cape Cod), MA

NOVEMBER 4-8, 1992

Genetics of Cancer

Supported by a Generous Grant
from the General Motors Cancer
Research Foundation

Co-Chairpersons: Webster K. Cavenee, San
Diego, CA; Raymond L. White, Salt
Lake City, UT
Marriott Hilton Head Resort, Hilton Head, SC

DECEMBER 7-12, 1992

Chemicals, Mutations, and Cancer

Co-Sponsored by the National
Cancer Institute of Canada

Chairperson: Lawrence A. Loeb, Seattle, WA
Banff Springs Hotel, Banff, Alberta, Canada

FEBRUARY 1-6, 1993

***Oncogenes and Tumor Suppressor Genes
in Cancer Etiology
and Mammalian Development***

Chairperson: Carlo M. Croce, Philadelphia, PA
Big Sky Resort, Big Sky, MT

MARCH 15-20, 1993

***Mechanism of Action of Retinoids,
Vitamin D, and Steroid Hormones***

Co-Chairpersons: Michael B. Sporn, Bethesda,
MD; Ronald M. Evans, San Diego, CA;
David Mangelsdorf, San Diego, CA
Banff Centre, Banff, Alberta, Canada

April 13-17, 1993

Model Systems in Cancer Research
(Tentative Title)

Supported by a Generous Grant
from the General Motors Cancer
Research Foundation

Co-Chairpersons: Leland H. Hartwell, Seattle,
WA; Peter K. Vogt, Los Angeles, CA;
George F. Vande Woude, Frederick, MD
San Luis Hotel, Galveston, TX

MAY 19-22, 1993

84th Annual Meeting

Chairperson: Michael B. Sporn, Bethesda, MD
Orange County Convention Center, Orlando,
FL

NOVEMBER 7-11, 1993

***Tumor Immunology: Basic and
Clinical Aspects***

Chairperson: Ralph A. Reisfeld, San Diego, CA
Grove Park Inn, Asheville, NC

JANUARY 31-FEBRUARY 5, 1994

***Molecular Genetics of Progression
and Metastasis***

Chairperson: Lance A. Liotta, Bethesda, MD
Big Sky Resort, Big Sky, MT

AACR members will receive brochures on the
above special conferences as soon as they are
available. Nonmembers should call or write:

American Association for Cancer Research
Public Ledger Building
620 Chestnut Street, Suite 816
Philadelphia, PA 19106-3483
215-440-9300 • 215-440-9313 (FAX)

THE WENDY AND EMERY REVES INTERNATIONAL BREAST CANCER SYMPOSIUM

RECENT ADVANCES IN THE BIOLOGY AND TREATMENT OF BREAST CANCER AND OTHER MALIGNANCIES

OCTOBER 16-17, 1992

The University of Texas Southwestern Medical Center
5323 Harry Hines Boulevard, Dallas, Texas 75235-9060
For more information: Phone 214/688-3404; Fax 214/688-8252

BRINGING TOGETHER EXPERTS IN THE FIELDS OF BASIC AND CLINICAL ONCOLOGY TO PRESENT RECENT ADVANCES IN THE
MOLECULAR BIOLOGY, DIAGNOSIS, AND TREATMENT OF CANCER WITH PARTICULAR EMPHASIS ON BREAST CANCER.

S P E A K E R S

SAMUEL BRODER, National Cancer Institute; PETER M. HOWLEY, National Cancer Institute; MARY-CLAIRE KING, University of California, Berkeley;
MARC W. KIRSCHNER, University of California, San Francisco; GEORGE KLEIN, Karolinska Institute, Stockholm; PHILIP LEDER, Harvard Medical
School, Howard Hughes Medical Institute; ARNOLD J. LEVINE, Princeton University; DAVID M. LIVINGSTON, Dana-Farber Cancer Institute;
PAUL A. MARKS, Memorial Sloan-Kettering Cancer Center; STEVEN L. MCKNIGHT, Carnegie Institute of Washington; JOHN D. MINNA, University of
Texas Southwestern Medical Center at Dallas; WILLIAM P. PETERS, Duke University Medical Center; JOSEPH SCHLESSINGER, New York University
Medical Center; CHARLES J. SHERR, St. Jude Children's Research Hospital; PHILIP THORPE, UT Southwestern Medical Center;
ELLEN S. VITETTA, UT Southwestern Medical Center.

SPONSORED BY THE SUSAN G. KOMEN FOUNDATION AND
THE UNIVERSITY OF TEXAS SOUTHWESTERN MEDICAL CENTER AT DALLAS

Cancer Research

Dr. A. Smith

"In Vivo and in Vitro Analysis of..."

Filename: Smith.doc

Hardware, Operating system, Software

Cancer Research accepts submissions
on disk to facilitate production.

Acceptable word processing packages are listed in *Guidelines for Submitting Disks to AACR Publications*, found in the back of every issue of *Cancer Research*. Tables and illustrations will be set from hard copy.

To submit your paper on disk, simply send a completed *Disk Submission Form* (found on the reverse of the *Guidelines for Submitting Disks to AACR Publications*) with your disk, labeled as shown above, to the AACR Publications Department. Be sure that the disk file is the most recent version of your paper and matches the hard copy printout.

For review purposes, 4 hard copy printouts of the manuscript and 4 copies of the original illustrations must accompany all submissions.

AACR SPECIAL CONFERENCE IN CANCER RESEARCH
**Molecular and Biochemical Methods in
Cancer Epidemiology and Prevention -
The Path Between the Laboratory and the Population**

September 23-26, 1992
The Registry Resort, Naples, Florida



CONFERENCE CHAIRPERSON

David Schottenfeld / Ann Arbor, MI

PROGRAM COMMITTEE

Myron Essex / Boston, MA
Curtis C. Harris / Bethesda, MD
Thomas E. Moon / Tucson, AZ

Stephen S. Hecht / Valhalla, NY
Barbara S. Hulka / Chapel Hill, NC

Lewis H. Kuller / Pittsburgh, PA
Mortimer L. Mendelsohn / Livermore, CA
Paul A. Schulte / Cincinnati, OH

SCIENTIFIC PROGRAM

Keynote Addresses

Paul A. Schulte / Cincinnati, OH
Mortimer L. Mendelsohn / Livermore, CA
Curtis C. Harris / Bethesda, MD

Assessment of Exposure to Genotoxic Agents

Stephen S. Hecht / Valhalla, NY
Steven R. Tannenbaum / Cambridge, MA
Frederica Perera / New York, NY
John D. Groopman / Baltimore, MD
Gerald N. Wogan / Cambridge, MA

Biological Markers of Genetic Susceptibility

Louise C. Strong / Houston, TX
Bruce A.J. Ponder / Sutton, England
Mark Leppert / Salt Lake City, UT
Kenneth H. Buetow / Philadelphia, PA

Viral Agents

Myron Essex / Boston, MA
W. Thomas London / Philadelphia, PA
Wayne D. Lancaster / Detroit, MI
Mark Schiffman / Bethesda, MD
Nancy E. Mueller / Boston, MA

**Dietary Biomarkers in
Preventive Intervention Studies**

Thomas E. Moon / Tucson, AZ
John D. Potter / Minneapolis, MN
Gladys Block / Bethesda, MD
David P. Rose / Valhalla, NY

**Measurement of Endogenous Sex Steroid
Hormones in Breast and Prostate Neoplasia**

Lewis H. Kuller / Pittsburgh, PA
James Gutai / Detroit, MI
David Schottenfeld / Ann Arbor, MI

**Disorders of Immune Function in
Human Carcinogenesis**

Charles Rabkin / Bethesda, MD
Ian T. Magrath / Bethesda, MD
David T. Purtilo / Omaha, NE

**Evaluation of the Applications of
Biochemical and Molecular Markers in
Epidemiological Studies**

Barbara S. Hulka / Chapel Hill, NC
Neil E. Caporaso / Bethesda, MD
Nathaniel Rothman / Bethesda, MD
Arthur Schatzkin / Bethesda, MD
Mark Schiffman / Bethesda, MD

Information and Application Forms

American Association for Cancer Research
Public Ledger Building
620 Chestnut Street, Suite 816
Philadelphia, PA 19106-3483

215-440-9300 215-440-9313 (FAX)

COVER LEGEND



Research on the etiology of many types of human cancer has led to the discovery of key elements accounting for the main human cancers. It was found that the prevailing life-style, especially the use of tobacco and smoking products, contributes to the occurrence of cancer of the respiratory tract, pancreas, kidney, and bladder. Smoking and alcoholism are associated with cancer of the head and neck. Smoking and heavy occupational asbestos contamination sharply increases cancer of the lung. On the other hand, dietary habits influence cancer of the stomach and, through different risk factors, contribute to the development of cancer of the breast, colon, prostate, ovary, endometrium, and pancreas. Historically, specific types of cancer risk have come from occupational exposure to certain chemicals, but broad knowledge in this area has hopefully reduced the occurrence of occupational cancers.

Research based knowledge needs to be translated into effective actions of cancer prevention and health promotion. Although such activities have occasionally been performed by certain individuals in various institutions, a major element in the United States has been

the active and effective operation of the Office of Disease Prevention and Health Promotion (ODPHP), an arm of the United States Public Health Service, United States Department of Health and Human Services. Officially, documents produced by the ODPHP bear the imprimatur of the Secretary of the Department or of the Surgeon General. *Cancer Research* has featured the Surgeons General of the United States Public Health Service on a previous cover (*Cancer Res.*, 49: Cover 16, 1989).

In recent years, the United States Department of Health and Human Services has released key publications, e.g., *Healthy People: The Surgeon General's Report on Health Promotion and Disease Prevention* (1979); *Promoting Health/Preventing Disease: Objectives for the Nation* (1980); *Dietary Guidelines for Americans* (1980, 1985, 1990); *The Surgeon General's Report on Nutrition and Health* (1988); *Guide to Clinical Preventive Services* (1989); and *Healthy People 2000* (1990). Initiation and coordination of the production of these volumes, recognized throughout the world as scientifically sound reports with much practical information on cancer prevention, are the responsibility of the Director of the ODPHP, J. Michael McGinnis, M.D., featured on this issue's cover.

Dr. McGinnis holds the official title of Deputy Assistant Secretary (Disease Prevention and Health Promotion) and is an officer in the United States Public Health Service, with the rank of Assistant Surgeon General. Dr. McGinnis has earned degrees in political science, medicine, and public policy from Berkeley, UCLA, and Harvard. He began his affiliation with the Public Health Service in 1972 and has held his current post since 1977. He has received many honors in the United States and abroad. Dr. McGinnis fosters effective cancer control through prevention by transferring key research findings for application by the public.

We are indebted to Mrs. C. Wypijewski and to Dr. McGinnis for the photographs.

John H. Weisburger