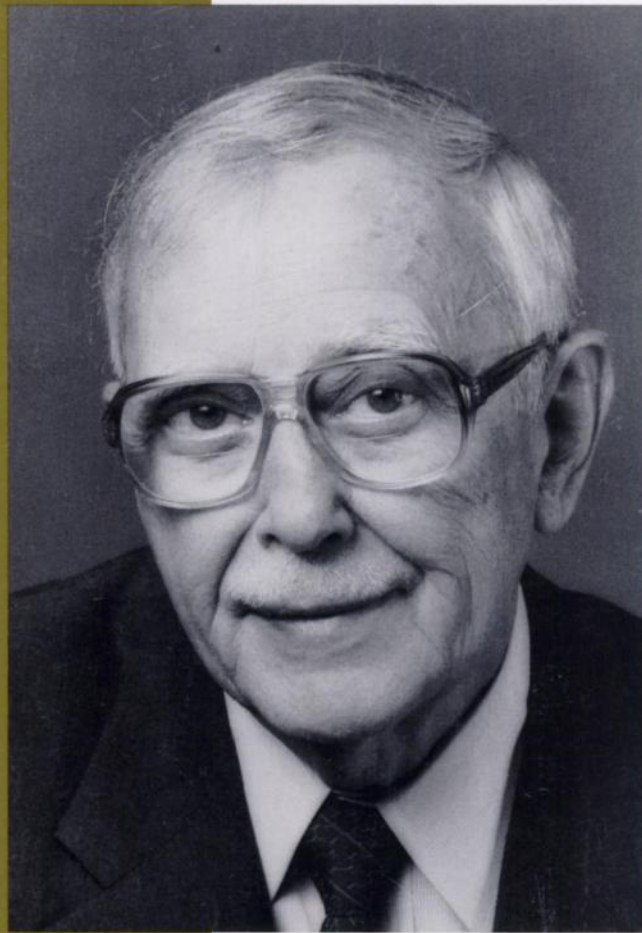




Cancer Research

OFFICIAL JOURNAL OF THE AMERICAN ASSOCIATION FOR CANCER RESEARCH

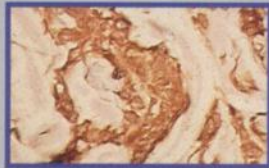


March 1, 1993
Volume 53 • Number 5
PP. 937-1212
ISSN 0008-5472 • CNREA 8

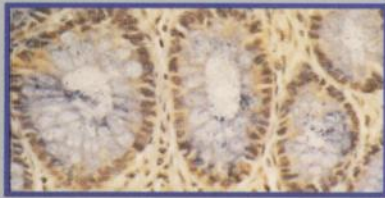
Oncogene Science:

The SOURCE™ for Proven Methods and Expert Applications Support!

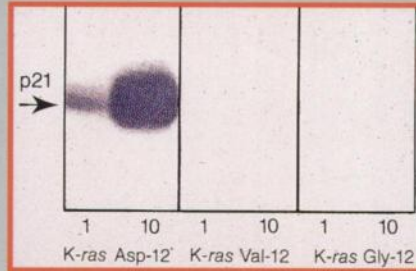
Specifically Tested for...



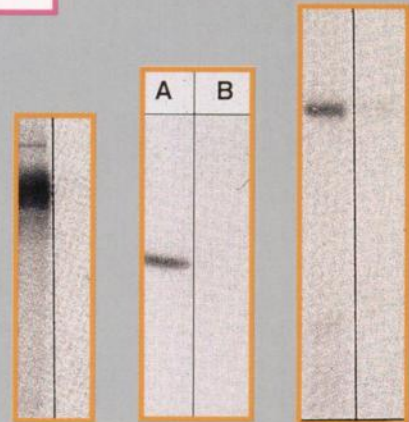
TGF α in Giant Nevus



c-jun in colon adenocarcinoma



Differentiation of ras Asp-12 using Mutation-Specific Antibody



P-Glycoprotein LDL-R HSP 72/73

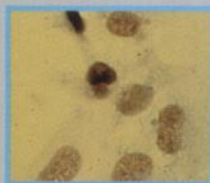
All shown with trp E negative control

Paraffin Section Staining

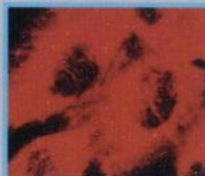
Western Blotting

Immuno-precipitation

Cellular Staining

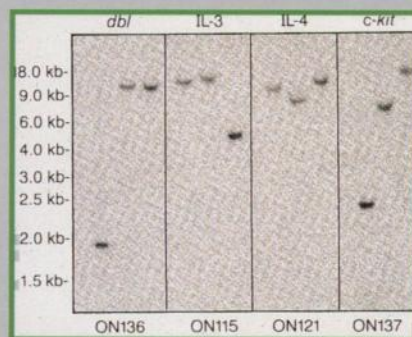


p53 in transfected SV80 cells



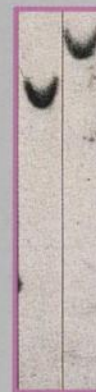
Cytokeratin in T-24 cells

Southern Hybridizations

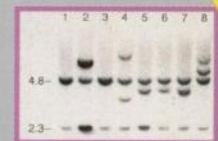


Southern blots using various 40 mer DNA probes

Leukemia Phenotyping



Non-isotopic bcl-2 system for detection of translocations in follicular lymphoma



FDA approved TransProbe-1™ kit for detection of Philadelphia (Ph') translocation in CML

Our name might give you the impression that we specialize only in oncogenes. As you can clearly see, our product line goes well beyond oncogenes. **And even this extensive listing is only a fraction of our total line!** We have cytoskeletal protein products, hemopoietic factor products, cytokines, interleukins, DNA tumor virus antibodies, cell adhesion antibodies, cardiovascular reagents, and products for neuroscience research. If you don't see what you need for your research, just give us a call at **800-662-2616** from anywhere in the continental US (NY included) or at **516-222-0023** from outside the US.

The SOURCE™

for over 1,000 Antibodies, Probes, ELISA's, and the Reagents to Make Them Work!

PS=Paraffin Sections WB=Western Blotting IP=Immunoprecipitation CS=Cellular Staining SH=Southern Hybridization

Cell Cycle Products

| | | |
|-------------------------------|--|------------------------------------|
| Cyclin A WB IP | Cyclin B₁ WB IP | p-13^{supc-1} IP |
| PCNA PS WB IP CS SH | p34^{cdc-2} WB IP CS | raf-1 WB IP |
| PSTAIRE WB IP CS | Protein Kinase C WB SH | |

p53/Tumor Suppressor Genes

| | | | |
|-------------------------------|-----------------------------------|---|--------------------------------------|
| p53 wild-type IP CS | mutant WB IP CS ELISA | panotropic PS WB IP CS SH ELISA | |
| Rb WB IP SH | DCC <i>Coming Soon!</i> | APC <i>Coming Soon!</i> | Wilm's <i>Coming Soon!</i> |

Signal Transduction

| | | | |
|---------------------------------------|-------------------------------|----------------------------|------------------|
| Phosphotyrosine PS WB IP CS | src WB IP CS Enzyme | | |
| fyn CS | c-abl WB IP CS SH | PTPases WB IP SH | trk IP |

Oncogenes

| | | |
|---|----------------------------------|---|
| erb-B2 (neu) PS WB IP CS SH ELISA | v-H-ras PS WB IP CS SH | c-H-ras PS WB IP CS SH |
| c-K-ras PS WB IP CS SH | c-N-ras PS WB IP CS SH | panotropic ras PS WB IP CS SH |
| Mutation-Specific ras Antibodies Asp-12, Arg-12, Glu-12, Val-12 | | ELISA <i>Coming Soon!</i> |

Transcription Factors

| | | |
|--------------------------------|---------------------------------------|--------------------------|
| c-fos PS WB IP CS SH | c-jun / AP-1 PS WB IP CS SH | jun B WB IP SH |
| c-myc WB IP CS SH | N myc WB IP CS SH | |

Growth Factors / Receptors

| | | | |
|--|--|--------------------------|----------------------------|
| TGFα PS WB CS SH ELISA | TGFβ IP WB SH | bFGF WB SH | PDGF SH |
| EGF PS WB IP SH ELISA | EGF-R PS WB IP CS SH ELISA | NGF-R IP CS SH | |
| Insulin SH | Insulin-R IP SH | IGF-I IP SH | IGF-I-R IP CS SH |

All products except TransProbe-1® are for research use only. Not for use in diagnostic or therapeutic procedures.

Call for more information— 1-800-662-2616

SH2 Domains src, PLC γ , p85
agarose & western blotting reagents

Quantitative ELISA's
TGF α , EGF-R, panotropic p53

Phosphatases 1B & T Cell

NEW

Oncogene Science™



106 Charles Lindbergh Blvd. Uniondale, NY 11553

Western Blotting=WB Western Blotting=WB Western Blotting=WB
Immunoprecipitation=IP Immunoprecipitation=IP Immunoprecipitation=IP
Paraffin Sections=PS Paraffin Sections=PS Paraffin Sections=PS
Cellular Staining=CS Cellular Staining=CS Cellular Staining=CS
Southern Hybridization=SH Southern Hybridization=SH Southern Hybridization=SH



AMERICAN ASSOCIATION FOR CANCER RESEARCH SCIENTIFIC CONFERENCES: 1993-1994

APRIL 13-17, 1993

Genetic Control of Cell Growth

Laureates Conference

General Motors

Cancer Research Foundation

Chairpersons: Leland H. Hartwell, Seattle, WA;
Peter K. Vogt, Los Angeles, CA; George F.
Vande Woude, Frederick, MD
San Luis Hotel, Galveston, TX

MAY 19-22, 1993

84th Annual Meeting

Chairperson: Michael B. Sporn, Bethesda, MD
Orange County Convention Center, Orlando, FL

OCTOBER 17-21, 1993

Cell Death and Cancer

Chairperson: Alan R. Eastman, Hanover, NH
Chatham Bars Inn, Chatham (Cape Cod), MA

NOVEMBER 7-11, 1993

***Molecular Approaches to
Cancer Immunotherapy***

Chairperson: Ralph A. Reisfeld, San Diego, CA
Grove Park Inn, Asheville, NC

NOVEMBER 9-13, 1993

***Interactions of Cancer Susceptibility
Genes and Environmental Carcinogenesis***

Joint Meeting with International Agency for
Research on Cancer

Chairpersons: Frederick P. Li, Boston, MA, and
Ruggiero Montesano, Lyon, France
IARC, Lyon, France

DECEMBER 5-9, 1993

Cell Signalling and Cancer Treatment

Joint Meeting with British Association for
Cancer Research and European
Organisation for Research and Treatment
of Cancer (PAM Group)

Chairpersons: Garth Powis, Tucson, AZ;
Paul Workman, Glasgow, Scotland
El San Juan Hotel, San Juan, PR

JANUARY 17-22, 1994

***Risk Assessment in Environmental
Carcinogenesis***

Chairpersons: Philip C. Hanawalt, Stanford, CA;
James A. Swenberg, Chapel Hill, NC
Whistler Resort and Conference Center, Whistler,
B.C., Canada

JANUARY 31-FEBRUARY 5, 1994

***Molecular Genetics of Progression
and Metastasis***

Chairperson: Lance A. Liotta, Bethesda, MD
Big Sky Resort, Big Sky, MT

FEBRUARY 19-24, 1994

Genomic Instability and Cancer

Chairpersons: Thea D. Tlsty and Lawrence A.
Loeb
Banff Springs Hotel, Banff, Alberta, Canada

MARCH 5-11, 1994

Growth Factors, Development, and Cancer

Joint Meeting with Friedrich-Miescher Institut

Chairpersons: Harold L. Moses and Bernd
Groner

Congress Center, Interlaken, Switzerland

APRIL 10-13, 1994

85th Annual Meeting

Chairperson: Karen S.H. Antman, Boston, MA
Moscone Center, San Francisco, CA

AACR members will receive brochures on the
above special conferences as soon as they are
available. Nonmembers should call or write:

American Association for Cancer Research
Public Ledger Building
620 Chestnut Street, Suite 816
Philadelphia, PA 19106-3483
215-440-9300 • 215-440-9313 (FAX)

