

## REVIEWS

- 2141 **Modulating Tumor Vasculature through Signaling Inhibition to Improve Cytotoxic Therapy**  
Amit Maity and Eric J. Bernhard
- 2146 **Drugging the PI3 Kinome: From Chemical Tools to Drugs in the Clinic**  
Paul Workman, Paul A. Clarke, Florence I. Raynaud, and Rob L.M. van Montfort

## PRIORITY REPORTS

- 2158 **A Genome-Wide Screen for Microdeletions Reveals Disruption of Polarity Complex Genes in Diverse Human Cancers**  
S. Michael Rothenberg, Gayatri Mohapatra, Miguel N. Rivera, Daniel Winokur, Patricia Greninger, Mai Nitta, Peter M. Sadow, Gaya Sooriyakumar, Brian W. Brannigan, Matthew J. Ulman, Rushika M. Perera, Rui Wang, Angela Tam, Xiao-Jun Ma, Mark Erlander, Dennis C. Sgroi, James W. Rocco, Mark W. Lingen, Ezra E.W. Cohen, David N. Louis, Jeffrey Settleman, and Daniel A. Haber
- 2165 **High-Throughput Screening for *Salmonella* Avirulent Mutants That Retain Targeting of Solid Tumors**  
Nabil Arrach, Pui Cheng, Ming Zhao, Carlos A. Santiviago, Robert M. Hoffman, and Michael McClelland

## CLINICAL STUDIES

- 2171 **Plasma Cytokine and Angiogenic Factor Profiling Identifies Markers Associated with Tumor Shrinkage in Early-Stage Non-Small Cell Lung Cancer Patients Treated with Pazopanib**  
Petros G. Nikolinos, Nasser Altorki, David Yankelevitz, Hai T. Tran, Shaoyu Yan, Dilip Rajagopalan, Walter Bordogna, Lone H. Ottesen, and John V. Heymach

## INTEGRATED SYSTEMS AND TECHNOLOGIES

- 2180 **Combined Delivery and Magnetic Resonance Imaging of Neural Cell Adhesion Molecule-Targeted Doxorubicin-Containing Liposomes in Experimentally Induced Kaposi's Sarcoma**  
Cristina Grange, Simonetta Geninatti-Crich, Giovanna Esposito, Diego Alberti, Lorenzo Tei, Benedetta Bussolati, Silvio Aime, and Giovanni Camussi
- 2191 **Exon Array Analyses across the NCI-60 Reveal Potential Regulation of TOP1 by Transcription Pausing at Guanosine Quartets in the First Intron**  
William C. Reinhold, Jean-Louis Mergny, Hongfang Liu, Michael Ryan, Thomas D. Pfister, Robert Kinders, Ralph Parchment, James Doroshow, John N. Weinstein, and Yves Pommier
- 2204 **Simultaneous Visualization of Protumorigenic Src and MT1-MMP Activities with Fluorescence Resonance Energy Transfer**  
Mingxing Ouyang, He Huang, Nathan C. Shaner, Albert G. Remacle, Sergey A. Shiryaev, Alex Y. Strongin, Roger Y. Tsien, and Yingxiao Wang

## MICROENVIRONMENT AND IMMUNOLOGY

- 2213 **Complementary Actions of Inhibitors of Angiopoietin-2 and VEGF on Tumor Angiogenesis and Growth**  
Hiroya Hashizume, Beverly L. Falcón, Takashi Kuroda, Peter Baluk, Angela Coxon, Dongyin Yu, James V. Bready, Jonathan D. Oliner, and Donald M. McDonald
- 2224 **Matrix Metalloproteinases Contribute Distinct Roles in Neuroendocrine Prostate Carcinogenesis, Metastasis, and Angiogenesis Progression**  
Laurie E. Littlepage, Mark D. Sternlicht, Nathalie Rougier, Joanna Phillips, Eugenio Gallo, Ying Yu, Kurt Williams, Audrey Brenot, Jeffrey I. Gordon, and Zena Werb

- 2235 **Antitumor and Anti-inflammatory Effects of Trabectedin on Human Myxoid Liposarcoma Cells**  
Giovanni Germano, Roberta Frapolli, Matteo Simone, Michele Tavecchio, Eugenio Erba, Samantha Pesce, Fabio Pasqualini, Federica Grosso, Roberta Sanfilippo, Paolo G. Casali, Alessandro Gronchi, Emanuela Viridis, Eva Tarantino, Silvana Pilotti, Angela Greco, Manuela Nebuloni, Carlos Maria Galmarini, Juan Carlos Tercero, Alberto Mantovani, Maurizio D'Incalci, and Paola Allavena
- 2245 **CD73 on Tumor Cells Impairs Antitumor T-Cell Responses: A Novel Mechanism of Tumor-Induced Immune Suppression**  
Dachuan Jin, Jie Fan, Long Wang, Linda F. Thompson, Aijie Liu, Benjamin J. Daniel, Tahiro Shin, Tyler J. Curiel, and Bin Zhang
- 2256 **Disruption of Laminin-Integrin-CD151-Focal Adhesion Kinase Axis Sensitizes Breast Cancer Cells to ErbB2 Antagonists**  
Xiuwei H. Yang, Ludmila M. Flores, Qinglin Li, Pengcheng Zhou, Fenghui Xu, Ian E. Krop, and Martin E. Hemler
- 2285 **Oncogenic Potential of Retinoic Acid Receptor- $\gamma$  in Hepatocellular Carcinoma**  
Ting-Dong Yan, Hua Wu, Hai-Ping Zhang, Na Lu, Ping Ye, Feng-Hai Yu, Hu Zhou, Wen-Gang Li, Xihua Cao, Ya-Yu Lin, Jia-You He, Wei-Wei Gao, Yi Zhao, Lei Xie, Jie-bo Chen, Xiao-kun Zhang, and Jin-Zhang Zeng
- 2296 **LYN Is a Mediator of Epithelial-Mesenchymal Transition and a Target of Dasatinib in Breast Cancer**  
Yoon-La Choi, Melanie Bocanegra, Mi Jeong Kwon, Young Kee Shin, Seok Jin Nam, Jung-Hyun Yang, Jessica Kao, Andrew K. Godwin, and Jonathan R. Pollack
- 2307 **Hsp27 Promotes Insulin-Like Growth Factor-I Survival Signaling in Prostate Cancer via p90Rsk-Dependent Phosphorylation and Inactivation of BAD**  
Amina Zoubeidi, Anousheh Zardan, Romina M. Wiedmann, Jennifer Locke, Eliana Beraldi, Ladan Fazli, and Martin E. Gleave
- 2318 **Jun Proteins Are Starvation-Regulated Inhibitors of Autophagy**  
Orli Yogev, Rachel Goldberg, Shira Anzi, Ohad Yogev, and Eitan Shaulian
- 2328 **A Functional Polymorphism in the NAD(P)H Oxidase Subunit *CYBA* Is Related to Gene Expression, Enzyme Activity, and Outcome in Non-Hodgkin Lymphoma**  
Marion Hoffmann, Markus A. Schirmer, Mladen V. Tzvetkov, Markus Kreuz, Marita Ziepert, Leszek Wojnowski, Dieter Kube, Michael Pfreundschuh, Lorenz Trümper, Markus Loeffler, Jürgen Brockmöller, and in collaboration with the German Study Group for High-Grade Non-Hodgkin Lymphoma (DSHNHL)
- 2339 **MicroRNA-375 Is Downregulated in Gastric Carcinomas and Regulates Cell Survival by Targeting PDK1 and 14-3-3 $\zeta$**   
Yoshiyuki Tsukamoto, Chisato Nakada, Tsuyoshi Noguchi, Masato Tanigawa, Lam Tung Nguyen, Tomohisa Uchida, Naoki Hijiya, Keiko Matsuura, Toshio Fujioka, Masao Seto, and Masatsugu Moriyama
- 2350 **Maternally Expressed Gene 3, an Imprinted Noncoding RNA Gene, Is Associated with Meningioma Pathogenesis and Progression**  
Xun Zhang, Roger Gejman, Ali Mahta, Ying Zhong, Kimberley A. Rice, Yunli Zhou, Pornsuk Cheunsuchon, David N. Louis, and Anne Klibanski

## MOLECULAR AND CELLULAR PATHOBIOLOGY

- 2264 **Transcriptional Pathway Signatures Predict MEK Addiction and Response to Selumetinib (AZD6244)**  
Jonathan R. Dry, Sandra Pavey, Christine A. Pratilas, Chris Harbron, Sarah Runswick, Darren Hodgson, Christine Chresta, Rose McCormack, Natalie Byrne, Mark Cockerill, Alexander Graham, Garry Beran, Andrew Cassidy, Carolyn Haggerty, Helen Brown, Gillian Ellison, Judy Dering, Barry S. Taylor, Mitchell Stark, Vanessa Bonazzi, Sugandha Ravishankar, Leisl Packer, Feng Xing, David B. Solit, Richard S. Finn, Neal Rosen, Nicholas K. Hayward, Tim French, and Paul D. Smith
- 2274 **p53 Regulates the Ras Circuit to Inhibit the Expression of a Cancer-Related Gene Signature by Various Molecular Pathways**  
Yosef Buganim, Hilla Solomon, Yoach Rais, Daria Kistner, Ido Nachmany, Mariana Brait, Shalom Madar, Ido Goldstein, Eyal Kalo, Nitzan Adam, Maya Gordin, Noa Rivlin, Ira Kogan, Ran Brosh, Galit Sefadia-Elad, Naomi Goldfinger, David Sidransky, Yoel Kloog, and Varda Rotter

## PREVENTION AND EPIDEMIOLOGY

- 2359 **A Susceptibility Locus on Chromosome 6q Greatly Increases Lung Cancer Risk among Light and Never Smokers**  
Christopher I. Amos, Susan M. Pinney, Yafang Li, Elena Kupert, Juwon Lee, Mariza A. de Andrade, Ping Yang, Ann G. Schwartz, Pam R. Fain, Adi Gazdar, John Minna, Jonathan S. Wiest, Dong Zeng, Henry Rothschild, Diptasri Mandal, Ming You, Teresa Coons, Colette Gaba, Joan E. Bailey-Wilson, and Marshall W. Anderson
- 2368 **Chemoprevention of Intestinal Tumorigenesis in APC<sup>min/+</sup> Mice by Silibinin**  
Subapriya Rajamanickam, Balaiya Velmurugan, Manjinder Kaur, Rana P. Singh, and Rajesh Agarwal
- 2379 **Annexin 1 Induced by Anti-Inflammatory Drugs Binds to NF-κB and Inhibits Its Activation: Anticancer Effects *In vitro* and *In vivo***  
Zhiqun Zhang, Liqun Huang, Wenping Zhao, and Basil Rigas
- 2389 **Pooled Analysis of Phosphatidylinositol 3-Kinase Pathway Variants and Risk of Prostate Cancer**  
Stella Koutros, Fredrick R. Schumacher, Richard B. Hayes, Jing Ma, Wen-Yi Huang, Demetrius Albanes, Federico Canzian, Stephen J. Chanock, E. David Crawford, W. Ryan Diver, Heather Spencer Feigelson, Edward Giovannucci, Christopher A. Haiman, Brian E. Henderson, David J. Hunter, Rudolf Kaaks, Laurence N. Kolonel, Peter Kraft, Loïc Le Marchand, Elio Riboli, Afshan Siddiq, Mier J. Stampfer, Daniel O. Stram, Gilles Thomas, Ruth C. Travis, Michael J. Thun, Meredith Yeager, and Sonja I. Berndt
- 2397 **Plasma Homocysteine and Cysteine and Risk of Breast Cancer in Women**  
Jennifer Lin, I-Min Lee, Yiqing Song, Nancy R. Cook, Jacob Selhub, JoAnn E. Manson, Julie E. Buring, and Shumin M. Zhang
- 2406 **A Large Prospective Study of Meat Consumption and Colorectal Cancer Risk: An Investigation of Potential Mechanisms Underlying this Association**  
Amanda J. Cross, Leah M. Ferrucci, Adam Risch, Barry I. Graubard, Mary H. Ward, Yikyung Park, Albert R. Hollenbeck, Arthur Schatzkin, and Rashmi Sinha

2415

### **Luteolin Inhibits Protein Kinase C and c-Src Activities and UVB-Induced Skin Cancer**

Sanguine Byun, Ki Won Lee, Sung Keun Jung, Eun Jung Lee, Mun Kyung Hwang, Sung Hwan Lim, Ann M. Bode, Hyong Joo Lee, and Zigang Dong

## THERAPEUTICS, TARGETS, AND CHEMICAL BIOLOGY

2424

### **Blockade of Mitogen-Activated Protein Kinase/Extracellular Signal-Regulated Kinase Kinase and Murine Double Minute Synergistically Induces Apoptosis in Acute Myeloid Leukemia via BH3-Only Proteins Puma and Bim**

Weiguo Zhang, Marina Konopleva, Jared K. Burks, Karen C. Dywer, Wendy D. Schober, Jer-Yen Yang, Teresa J. McQueen, Mien-Chie Hung, and Michael Andreeff

2435

### **Oncolytic Viral Therapy for Prostate Cancer: Efficacy of Reovirus as a Biological Therapeutic**

Chandini M. Thirukkumaran, Michael J. Nodwell, Kensuke Hirasawa, Zhong-Qiao Shi, Roman Diaz, Joanne Luider, Randal N. Johnston, Peter A. Forsyth, Anthony M. Magliocco, Patrick Lee, Sandra Nishikawa, Bryan Donnelly, Matt Coffey, Kiril Trpkov, Kevin Fonseca, Jason Spurrell, and Don G. Morris

2445

### **Novel STAT3 Phosphorylation Inhibitors Exhibit Potent Growth-Suppressive Activity in Pancreatic and Breast Cancer Cells**

Li Lin, Brian Hutzen, Mingxin Zuo, Sarah Ball, Stephanie Deangelis, Elizabeth Foust, Bulbul Pandit, Michael A. Ihnat, Satyendra S. Shenoy, Samuel Kulp, Pui-Kai Li, Chenglong Li, James Fuchs, and Jiayuh Lin

2455

### **CD44 Attenuates Activation of the Hippo Signaling Pathway and Is a Prime Therapeutic Target for Glioblastoma**

Yin Xu, Ivan Stamenkovic, and Qin Yu

2465

### **Targeting Cancer Cell Metabolism: The Combination of Metformin and 2-Deoxyglucose Induces p53-Dependent Apoptosis in Prostate Cancer Cells**

Issam Ben Sagra, Kathiane Laurent, Sandy Giuliano, Frédéric Larbret, Gilles Ponzio, Pierre Gounon, Yannick Le Marchand-Brustel, Sophie Giorgetti-Peraldi, Mireille Cormont, Corine Bertolotto, Marcel Deckert, Patrick Auberger, Jean-François Tanti, and Frédéric Bost

2476 **Downregulation of Notch Pathway by a  $\gamma$ -Secretase Inhibitor Attenuates AKT/Mammalian Target of Rapamycin Signaling and Glucose Uptake in an ERBB2 Transgenic Breast Cancer Model**

Clay L. Efferson, Christopher T. Winkelmann, Christopher Ware, Timothy Sullivan, Saverio Giampaoli, Jennifer Tammam, Shailendra Patel, Giuseppe Mesiti, John F. Reilly, Raymond E. Gibson, Carolyn Buser, Timothy Yeatman, Domenico Coppola, Christopher Winter, Edwin A. Clark, Giulio F. Draetta, Peter R. Strack, and Pradip K. Majumder

2485 **An ErbB3 Antibody, MM-121, Is Active in Cancers with Ligand-Dependent Activation**

Birgit Schoeberl, Anthony C. Faber, Danan Li, Mei-Chih Liang, Katherine Crosby, Matthew Onsum, Olga Burenkova, Emily Pace, Zandra Walton, Lin Nie, Aaron Fulgham, Youngchul Song, Ulrik B. Nielsen, Jeffrey A. Engelman, and Kwok-Kin Wong

2495 **Suppression of Tumor Growth and Metastasis by Simultaneously Blocking Vascular Endothelial Growth Factor (VEGF)-A and VEGF-C with a Receptor-Immunoglobulin Fusion Protein**

Dapeng Zhang, Bohua Li, Jingping Shi, Lei Zhao, Xunming Zhang, Chong Wang, Sheng Hou, Weizhu Qian, Geng Kou, Hao Wang, and Yajun Guo

2504 **Therapeutic Antibodies to Human LICAM: Functional Characterization and Application in a Mouse Model for Ovarian Carcinoma**

Silke Wolterink, Gerhard Moldenhauer, Mina Fogel, Helena Kiefel, Marco Pfeifer, Sandra Lüttgau, Ricardo Gouveia, Julia Costa, Jan Endell, Ulrich Moebius, and Peter Altevogt

2516 **Antineoplastic Mechanisms of Niclosamide in Acute Myelogenous Leukemia Stem Cells: Inactivation of the NF- $\kappa$ B Pathway and Generation of Reactive Oxygen Species**

Yanli Jin, Zhongzheng Lu, Ke Ding, Juan Li, Xin Du, Chun Chen, Xiaoyong Sun, Yongbin Wu, Jing Zhou, and Jingxuan Pan

2528 **Antibody-Maytansinoid Conjugates Designed to Bypass Multidrug Resistance**

Yelena V. Kovtun, Charlene A. Audette, Michele F. Mayo, Gregory E. Jones, Heather Doherty, Erin K. Maloney, Hans K. Erickson, Xiuxia Sun, Sharon Wilhelm, Olga Ab, Katharine C. Lai, Wayne C. Widdison, Brenda Kellogg, Holly Johnson, Jan Pinkas, Robert J. Lutz, Rajeeva Singh, Victor S. Goldmacher, and Ravi V.J. Chari

## TUMOR AND STEM CELL BIOLOGY

2538 **BRD7, a Subunit of SWI/SNF Complexes, Binds Directly to BRCA1 and Regulates BRCA1-Dependent Transcription**

Mary T. Harte, Garrett J. O'Brien, Niamh M. Ryan, Julia J. Gorski, Kienan I. Savage, Nyree T. Crawford, Paul B. Mullan, and D. Paul Harkin

2548 **Preclinical Evaluation of Radiation and Perifosine in a Genetically and Histologically Accurate Model of Brainstem Glioma**

Oren J. Becher, Dolores Hambardzumyan, Talia R. Walker, Karim Helmy, Javad Nazarian, Steffen Albrecht, Rebecca L. Hiner, Sarah Gall, Jason T. Huse, Nada Jabado, Tobey J. MacDonald, and Eric C. Holland

2558 **Constitutively Active Stat3 Enhances Neu-Mediated Migration and Metastasis in Mammary Tumors via Upregulation of Cten**

Isaia Barbieri, Sara Pensa, Tania Pannellini, Elena Quaglino, Diego Maritano, Marco Demaria, Alessandra Voster, James Turkson, Federica Cavallo, Christine J. Watson, Paolo Provero, Piero Musiani, and Valeria Poli

## CORRECTIONS

2568 **Correction:  $\alpha$ 7-Nicotinic Acetylcholine Receptors Affect Growth Regulation of Human Mesothelioma Cells: Role of Mitogen-Activated Protein Kinase Pathway**

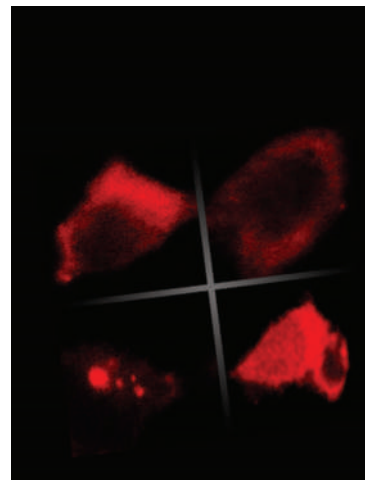
2569 **Correction: CCL2 Blockade Augments Cancer Immunotherapy**

2569 **Correction: Combining Human and Rat Sequences in Her-2 DNA Vaccines Blunts Immune Tolerance and Drives Antitumor Immunity**

---

## ABOUT THE COVER

Targeting cancer cell metabolism is a promising new strategy to fight cancer. Metformin, a widely used antidiabetic agent, exerts antitumoral and antiproliferative action. The addition of metformin to 2-deoxyglucose (2DG) inhibited mitochondrial respiration and glycolysis, leading to a severe depletion in ATP and the induction of apoptosis. In this figure, Ben Sahra and colleagues showed that metformin inhibited 2DG-induced autophagy and triggered a switch from a survival process to cell death. For details, see the article by Ben Sahra and colleagues on page 2465 of this issue.



# Cancer Research

The Journal of Cancer Research (1916-1930) | The American Journal of Cancer (1931-1940)

## 70 (6)

*Cancer Res* 2010;70:2141-2569.

**Updated version** Access the most recent version of this article at:  
<http://cancerres.aacrjournals.org/content/70/6>

**E-mail alerts** [Sign up to receive free email-alerts](#) related to this article or journal.

**Reprints and Subscriptions** To order reprints of this article or to subscribe to the journal, contact the AACR Publications Department at [pubs@aacr.org](mailto:pubs@aacr.org).

**Permissions** To request permission to re-use all or part of this article, use this link <http://cancerres.aacrjournals.org/content/70/6>. Click on "Request Permissions" which will take you to the Copyright Clearance Center's (CCC) Rightslink site.