

## INSTRUCTIONS FOR AUTHORS

**Manuscripts for *Cancer Research*** must represent new and original contributions not previously published and, if accepted, not to be published elsewhere. They must be typed, double-spaced (including references, footnotes, and tables), with ample margins, on bond paper. The original and one clear copy of the entire manuscript, including figures and charts, must be submitted. All pages should be numbered consecutively. Every paper must begin with a concise *summary* of the essential results of the investigation.

**Supplements on Cancer Chemotherapy Screening Data.** Authors who wish to submit data for publication in these supplements, which appear at least three times a year, are urged to consult the Instructions for the preparation of such material, found on the inside back cover of most of these supplements.

**Critical reviews** on subjects dealing with cancer and allied fields will be considered for publication. Such reviews should attempt to correlate the various approaches to a problem so as to indicate the trends and emphasize the aspects that require further clarification. Critical analyses of the pertinent issues and expressions of opinions are encouraged.

The title of the paper should be as short as is compatible with a clear indication of the subject matter. The title (with subtitle, if any) must not exceed 130 characters. Chemical formulas should not be included in the title. The title of the paper, author (or authors), location, and any acknowledgments should appear on a separate page.

**Footnotes** within the text should be numbered consecutively and should appear on a separate sheet.

**Tables** should be typed, double-spaced throughout, on separate sheets and should be numbered. Each must have a brief, descriptive title. Tables should be arranged for vertical position on the page. Every column must be supplied with an appropriate heading, and units of measure must be clearly indicated. The same data may be presented in either chart or tabular form, but not in both. Tables should be intelligible without reference to the text.

**Illustrations:** The preparation of photographs, charts, and graphs is particularly important, and authors are requested to follow carefully the directions given below.

Halftone illustrations (photomicrographs and photographs) are designated *figures* and are printed as plates at the end of each article. Figures in moderate numbers will be accepted if they are of good technical quality and essential for the clarity of the presentation. Figures should be trimmed to show only the essential features; all parts of each figure must be in sharp focus. Only clear, glossy photographs should be submitted. *Mount all photographs on*

*white cardboard* (8½×11 inches in size), with the edges abutting tightly. The engraver will then draw a thin line between adjoining figures. Place as many together as will make a plate not to exceed 6×8½ inches. Each figure should be numbered consecutively. Photographs of plates should accompany the second copy of the manuscript. Legends for plate figures should be typed separately, in consecutive order, on standard-sized paper with the heading "Legends for Figures."

Line-cut illustrations (graphs and charts) are designated *charts* and are printed in the text. These should be numbered in consecutive order. Charts should be planned so as to eliminate waste space; they must be ruled off close to the area of the curves, and descriptive matter must not extend beyond the curves. Charts must be so prepared that no letter or figure will be less than 2 mm. high after reduction. The majority of charts can be reduced to a one-column (3-inch) width, but larger ones are permissible when many data are included in one chart. Original line drawings on high-quality white drawing paper or board, blue tracing cloth, or coordinate paper *printed in blue* should be used. Only India ink should be used for drawing or lettering. Photographs of the charts should accompany the second copy of the manuscript. Legends for each chart should be typed separately in consecutive order on standard-sized paper with the heading "Legends for Charts."

The over-all size of mounted charts and plates must not exceed 8½×11 inches. When original drawings exceed this size, photographed reductions must be sent.

**References** must be typed *double-spaced* and should include, in order: author, title, journal abbreviation (*Quarterly Cumulative Index Medicus* form), volume number in Arabic numerals, inclusive pages, and year. Book references should give: author, title, pages, edition number, city, publisher, and year. All references should be checked with the original publications and must be *arranged in alphabetical order*. Each number in the references is to refer to only one paper. *Unpublished data and personal communications may not be included in "References" but must be listed as footnotes.* For examples of the correct style, refer to any current issue of *Cancer Research*.

**Changes in proof:** Any but minor changes from the manuscript which are made in proof will be billed to the author.

**Reprints** may be ordered before publication, according to a schedule of prices accompanying the galley proof of the article.

**Manuscripts and correspondence** related to contributions should be addressed to: Dr. Harold P. Rusch, Editor, *Cancer Research*, McArdle Memorial Laboratory, Madison 6, Wisconsin.

## INFORMATION FOR SUBSCRIBERS

All subscriptions and business inquiries should be addressed to the publishers, The University of

Chicago Press, 5750 Ellis Avenue, Chicago 37, Illinois.

# MIDWAY

The University of Chicago Press is pleased to announce the publication of an exciting new quarterly

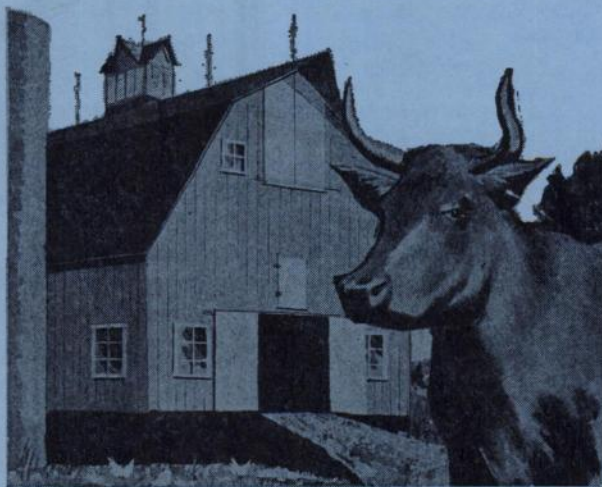
## MIDWAY

*a magazine of discovery in the arts and sciences*

*a selection from the works of scholars the world over  
as well as plays, poems, and stories  
chosen from journals and books published by the University of Chicago Press and presented in non-technical language for the layman*

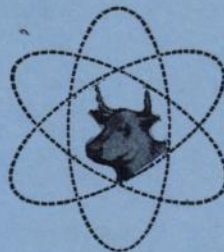
MIDWAY 4 appears October, 1960, and includes "Social Change in Japan," by Kazuo Kawai; "The Cancer Problem: A Comprehensive Review," by George Crile, Jr., M.D.; "Selection and 'Significance' in the Modern Novel," by David Daiches; "The Intellectual's Clouded Mirror," by Melvin Seeman; and other articles by Charles E. Osgood, Denison B. Hull, and Frank N. Freeman.

One-year subscriptions at \$3.50 or single copies at \$1.00 are available from the University of Chicago Press, 5750 Ellis Avenue, Chicago 37, Illinois



## The barn door is "Wide Open"

The Barn Door is literally "wide open" at NBCo and out of it have come more than 100 items we jokingly refer to as "Barnyard Biochemicals". These are the various chemicals of direct animal origin—Cephalin, Lecithin, Enzymes, Blood derivatives, etc. These are of tremendous importance as sources of active principles. It is from materials of direct animal source that many new approaches may still be evolved. These "Barnyard Biochemicals" are among the more than 2,600 products offered by NBCo, the largest Research Biochemicals House on the globe featuring complete inventories of highest quality Biochemicals at economical prices and instant service.



**NUTRITIONAL  
BIOCHEMICALS  
CORPORATION**  
21010 MILES AVENUE  
CLEVELAND 28, OHIO



SEND FOR OUR FREE  
JULY, 1960 CATALOG CR  
CONTAINING MORE THAN 2600  
ITEMS. FILL OUT COUPON AND  
MAIL TODAY FOR YOUR COPY.

NAME \_\_\_\_\_  
ORGANIZATION \_\_\_\_\_  
ADDRESS \_\_\_\_\_  
CITY \_\_\_\_\_  
STATE \_\_\_\_\_ TIME \_\_\_\_\_