

AUTHOR INDEX

November 1980

- Allen, L. M., 4059
 Anderson, K. M., 4127
 Appella, E., 4204
 Arnold, L. J., 4322
 Arya, S. K., 3880
 Ashley, M. P., 4197
 Ashley, R. L., 4232
 Aust, A. E., 4070
- Baker, M. A., 4048
 Birnbaum, R. S., 4192
 Blot, W. J., 3875
 Bonomi, P., 4127
 Børresen, T., 4320
 Boutwell, R. K., 4013
 Broxmeyer, H. E., 3928
 Brunenraber, H., 4085
 Bryan, A. H., 4007
 Bryant, D., 4031
 Bullock, B. C., 3988
 Burchenal, J. H., 4243
- Cadman, E., 4000
 Calvert, I., 4325
 Canellos, G. P., 3901
 Cardiff, R. D., 4232
 Carson, D. A., 4178
 Catane, R., 4165
 Cerutti, P. A., 4313
 Chan, V-L., 4123
 Chang, R. L., 3910
 Chawla, R. K., 3915, 4187
 Chen, C-h. B., 4144
 Chen, K. Y., 4100
 Chou, J. Y., 4025
 Chou, T-C., 4243
 Christensen, I. J., 4295
 Christensen, N. J., 4320
 Christensen, W. L., 3886
 Clement, J. J., 4165
 Coleman, M. S., 4048
 Conney, A. H., 3910
 Connor, M., 4037
 Corder, M. P., 4076
 Cory, J. G., 3891
 Creaven, P. J., 4151
 Croisy-Delcey, M., 3910
 Crooke, S. T., 4173
- Dahl, G. V., 4250
 Davis, T. E., 4043
 Day, J. L., 4209
 Day, N. E., 3875
 de Both, N. J., 4270
 DeLeo, A. B., 4204
 Dick, F. R., 4076
 Digernes, V., 4254
 Dodge, W., 4031
 Doellgast, G. J., 4064
 Donahue, P. R., 4085
 DuBois, G. C., 4204
- Economou S., 4127
 Eisenstadt, E., 3940
 Engel, L. W., 3880
 Eppenberger, U., 4265
 Erickson, L. C., 4216
 Essigmann, J. M., 4085
 Evans, R. M., 4113
 Evans, W. E., 4250
- Falahee, K. J., 4070
 Faulkin, L. J., 4232
 Fisher, B., 3863
 Fiske, W. W., 4100
 Fleischer, A. E., 3891
 Fortner, J. G., 4081
- Fraumeni, J. F., Jr., 3875
 Freyer, J. P., 3956
 Fujimura, S., 4287
- Gallagher, M. T., 4159
 Ganapathi, R., 3895
 Gerweck, L. E., 4019
 Geyer, E., 4265
 Gilbertson, S., 3928
 Gold, A., 3940
 Goldenberg, G. J., 3950
 Gorman, M. S., 4165
 Grant, S., 4000
 Grotzinger, K. R., 4109
- Hakala, M. T., 4113
 Häkkinen, I. P. T., 4308
 Hansen, H. H., 4295
 Hansen, M., 4295
 Hayat, M., 4282
 Hecht, S. S., 4144
 Heinonen, R., 4308
 Henderson, I. C., 3901
 Hendrickson, C., 4127
 Henriksen, O. B., 4320
 Heppner, G. H., 3977
 Hilliard, S., 4225
 Hira, F., 4301
 Hirsch, F. R., 4295
 Holtzman, S., 3966
 Homesley, H. D., 4064
 Huang, C-H., 4173
 Huber, P. R., 4265
 Hunter, J. T., 4197
- Iizuka, H., 4301
 Inberg, M. V., 4308
 Inoue, T., 4301
 Ishii, M., 4276
 Ishikawa, T., 4261
 Israel, M., 3901
 Ito, Y., 4329
 Ittah, Y., 3910
- Järvi, O. H., 4308
 Jamin, C., 4282
 Jerina, D. M., 3910
 Jennings, M., 4019
 Jochimsen, P. R., 4076
 Johnson, R. K., 4165
 Juranka, P., 4123
- Kalter, H., 3973
 Kamatani, N., 4178
 Kaneko, M., 4313
 Karakousis, C., 4151
 Khalil, F. L., 4053
 Kishishita, M., 4329
 Kitagawa, T., 4261
 Kizaki, H., 3921
 Klootwijk-van Dijke, E., 4270
 Kobata, A., 4276
 Koch, M. R., 4053
 Kohn, K. W., 4216
 Krishan, A., 3895
 Krishnamurti, C., 4092
 Küng, W. M., 4265
 Kwak, E., 4270
- Laishes, B. A., 4133
 Lam, H-Y. P., 3950
 Lampidis, T. J., 3901
 Laskin, J. D., 4113
 Law, L. W., 4204
 Lawson, D. H., 3915, 4187
 Lea, M. A., 4053
 Leith, J., 3977
- Levin, W., 3910
 Liu, A. Y. C., 4100
 Long, C. W., 3886
 Ludlum, D. B., 4183
 Lund, J. K., 4232
- MacDonald, J. S., 4282
 Maher, V. M., 4070
 Mahoney, K. H., 3934
 Mandel, H. G., 4209
 Mandybur, T. I., 3973
 Margolis, V. B., 3928
 Marogil, M., 4127
 Mathé, G., 4282
 Maybaum, J., 4209
 McCormick, J. J., 4070
 McLachlan, J. A., 3988
 Meade-Cobun, K. S., 4007
 Medina, D., 3982
 Mehta, J. R., 4183
 Miller, B. E., 3977
 Miller, F. R., 3977
 Mirabelli, C. K., 4173
 Mitchell, D. J., 4232
 Mittelman, A., 4151
 Mizuochi, T., 4276
 Morahan, P. S., 3934
 Mori, K. J., 4282
 Morris, H. P., 3921
 Morris, L. E., 3875
 Morse, S. S., 3934
 Murray, T. G., 3915
 Muszynski, M., 4192
 Myers, C. E., 4109
- Nasrallah, A. G., 4159
 Newberne, P. M., 4037
 Newbold, R. R., 3988
 Nishikawa, H., 4301
 Nissen, N. I., 4295
 Nixon, D. W., 3915
 Nowak, N. J., 4151
- Oborn, C. J., 3982
 Ogura, T., 4301
 Okamoto, K., 4287
 Old, L. J., 4204
 Ormsby, I., 3973
 Ozols, R. F., 4109
- Palan, P. R., 4221
 Patil, S. R., 4076
 Pavelic, Z. P., 4151
 Peace, B. B., 3875
 Peck, C., 4225
 Petering, D. H., 4092
 Phillips, F. S., 4243
 Pollack, V. A., 4007
 Pratt, C. B., 4250
 Priest, E. L., 4159
 Przybylski, M., 4183
- Rabson, A. S., 4325
 Rainbow, A. J., 3945
 Ralph, P., 3928
 Ramonas, L. M., 4216
 Rapp, H. J., 4197
 Richards, B., 4019
 Richmond, A., 4187
 Richmond, A., 3915
 Rivera, C., 4250
 Roberts, D., 4225
 Rolfe, P. B., 4133
 Romney, S. L., 4221
 Roos, B. A., 4192
 Rose, D. P., 4043
 Rosen, S. W., 4325
- Ruddon, R. W., 4007
 Rudman, D., 3915, 4187
 Rustum, Y. M., 4151
- Sadee, W., 4209
 Sakatani, M., 4301
 Saryan, L. A., 4092
 Saxholm, H. J. K., 4254
 Schmidt, F., 3915
 Sharma, S., 4031
 Shimkin, M. B., 4322
 Shlaer, S. M., 3915
 Shoji, M., 3915
 Sekimoto, K., 4287
 Shellabarger, C. J., 3966
 Shiu, M. H., 4081
 Shumak, K. H., 4048
 Slocum, H. K., 4151
 Smith, R., 4031
 Snead, R. M., 3886
 Spang-Thomsen, M., 4295
 Sternberg, S. S., 4243
 Stone, J. P., 3966
 Story, D. L., 4085
 Strauchen, J. A., 3888
 Stroube, R. B., 3875
 Sugimoto, T., 4197
 Suk, W. A., 3886
 Sutherland, R. M., 3956
- Tagnon, I., 3875
 Takayama, S., 4261
 Takita, H., 4151
 Talgoy, M. M., 3950
 Tan, C. T.C., 4243
 Tanaka, N., 4287
 Taub, R. N., 4048
 Taylor, D. D., 4064
 Theiss, J. C., 4322
 Thornthwaite, J. T., 4059
 Tokita, H., 4287
 Tralka, T. S., 3880
 Trentin, J. J., 4159
 Tseng, J. S., 4325
- Ueno, T., 4287
 Ullman, B., 4209
- Vaajalahti, P., 4308
 Verma, A. K., 4013
 Viikari, S. J., 4308
 Vindeløv, L. L., 4295
- Warkany, J., 3973
 Weber, G., 3921
 Weekes, R. G., 4013
 Weintraub, B. D., 4325
 Weltz, M. D., 4109
 Williams, J. C., 3921
 Willson, J. K. V., 4109
 Wodinsky, I., 4165
 Wogan, G. N., 4085
 Wood, A. W., 3910
 Woodcock, T. M., 4243
- Yagi, H., 3910
 Yamamura, Y., 4301
 Yanase, S., 4329
 Yee, G. C., 4250
 Yoshima, H., 4276
 Yoshimoto, T., 4301
 Young, C. W., 4243
 Young, N. A., 3880
 Young, R., 4144
 Young, R. C., 4109
- Zaharko, D. S., 4216
 Zbar, B., 4197

Statement of Ownership, Management and Circulation required by the Act of August 12, 1970; Section 3685, Title 39, United States Code

1. *Date of Filing:* October 1, 1980.
2. *Title of Publication:* CANCER RESEARCH.
3. *Frequency of Issue:* Monthly.
4. *Location of Known Office of Publication:* 428 East Preston Street, Baltimore, Maryland 21202.
5. *Location of the Headquarters or General Business Offices of Publisher:* 428 East Preston Street, Baltimore, Maryland 21202.
6. *Publisher:* The Williams & Wilkins Company, 428 East Preston Street, Baltimore, Maryland 21202.

Editor: Dr. Peter N. Magee, Fels Research Institute, Temple University School of Medicine, Philadelphia, Pennsylvania 19140.

Managing Editor: Miss Margaret Foti, Fels Research Institute, Temple University School of Medicine, Philadelphia, Pennsylvania 19140.

7. *Owners:* (If owned by a corporation, its name and address must be stated and also immediately thereunder the names and addresses of stockholders owning or holding 1 percent or more of total amount of stock. If not owned by a corporation, the names and addresses of the individual owners must be given. If owned by a partnership or other unincorporated firm, its name and address, as well as that of each individual, must be given.) Cancer Research, Inc., 1275 York Avenue, New York, NY 10021. No stockholders.

8. *Known bondholders, mortgagees and other security holders owning or holding 1 percent or more of total amount of bonds, mortgages or other securities are:* None.

9. Paragraphs 7 and 8 include, in cases where the stockholder or security holder appears upon the books of the company as trustee or in any other fiduciary relation, the name of the person or corporation for whom such trustee is acting, also the statements in the two paragraphs show the affiant's full knowledge and belief as to the circumstances and conditions under which stockholders and security holders who do not appear upon the books of the company as trustees, hold stock and securities in a capacity other than that of a bona fide owner. Names and addresses of individuals who are stockholders of a corporation which itself is a stockholder or holder of bonds, mortgages or other securities of the publishing corporation have been included in Paragraphs 7 and 8 when the interest of such individuals are equivalent to 1 percent or more of the total amount of the stock or securities of the publishing corporation.

	(a) ^a	(b) ^b
10. A. Total No. of copies printed (net press-run)	6593	6670
B. Paid circulation		
B. 1. To term subscribers by mail, carrier delivery or by other means	5415	5708
2. Sales through agents, news dealers or otherwise	none	none
C. Total paid circulation	5415	5708
D. Free distribution (including samples), by mail, carrier delivery or by other means	45	47
E. Total No of copies distributed	5460	5755
F. 1. Copies not distributed	1133	915
2. Returns from news Agents	none	none
G. Total	6593	6670

^a Average No. of copies for each issue during preceding months.

^b Single issue nearest to filing date.

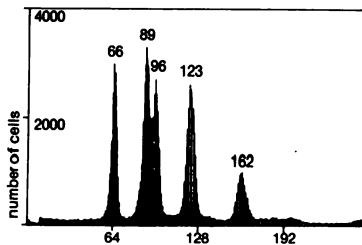
I certify that the statements made by me above are correct and complete. (Signed) Robert K. Startt, Jr., Vice President.

The Ortho ICP 22A Flow Cytometer utilizes a high power mercury arc lamp in combination with a Kohler optical system to achieve extraordinary precision and wide versatility. The capabilities of this instrument are best evaluated from the standpoint of the results it can provide. Examine the actual fluorescence histograms presented.

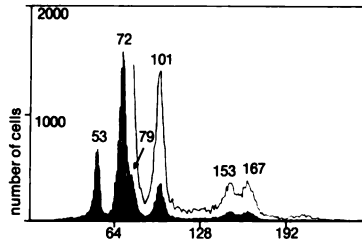
The high resolution of the instrument is complemented by its dual channel fluorescence detectors, which allow correlated measurements of two different dyes. Thus, the ICP 22A can provide simultaneous measurement of per cell DNA and protein content. Because of its Kohler illumination system it can even measure the DNA content of cells in which the DNA is irregularly distributed. Given the range of specific stoichiometric dyes available, its versatility is almost unmatched. To enhance that versatility still further, the ICP 22A will soon offer electronic cell volume measurement in addition to the other parameters (available September 1980).

Therapy monitoring by flow cytometric analysis

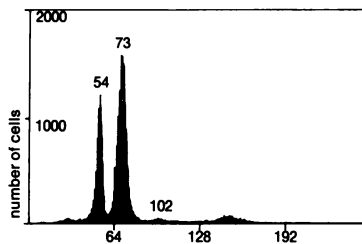
1. DNA histograms show a multiclonal tumor with four distinct tumor cell lines. Left peak in all histograms is normal cells. During three month chemotherapy with bleomycin and DTIC, the three higher ploidy tumor lines disappeared leaving only the more resistant lowest ploidy line. This biopsy series shows the different sensitivities of tumor cell lines in the same patient.



1a. At commencement of chemotherapy, the DNA histogram shows four cell lines with different ploidy stages. Left peak is normal diploid cells.



1b. After two months the DNA histogram shows suppression of three of the tumor cell lines.



1c. One month later, the DNA histogram shows the disappearance of higher ploidy tumor cell lines and the resistance of lower ploidy tumor cell line to chemotherapy.

In order to provide customers with complete support, Ortho maintains an Applications Laboratory that is available for confirmation and consultation services. Additionally, an international network of service technicians is ready to aid customers should calibration or repairs ever be required.

The Ortho ICP 22A offers remarkable precision and versatility at an exceptionally affordable price. We invite you to contact the Research Instruments Division of Ortho to find out more about the ICP Flow Cytometer. It's available either as a stand alone flow cytometric analyzer or as part of an Ortho System 40 or 60, with dual laser illumination.

Protocols No. 28 and 29

Two new Protocols; *One step Ethidium Bromide DNA/Cell Staining Procedure and DNA analysis using D.A.P.I.* are available from Ortho. Write or call for your complimentary copies. (617) 329-6100



**Precision, versatility
and exceptional value.**

The ICP Flow Cytometer



**ANNUAL REVIEW
OF PUBLIC HEALTH
Volume 1**

Lester Breslow, Editor
Jonathan E. Fielding, Associate Editor
Lester B. Lave, Associate Editor

The steady expansion of significant research in the field of public health has prompted the publication of this latest addition to the growing list of *Annual Reviews*. Each volume in this new series will cover a limited number of specific topics, but it is the intention of its Editors to present a balanced view of continuing developments in the field of public health. Included in this volume are articles on: epidemiology and health policy; scientific bases for identification of potential carcinogens and estimation of risks; biostatistics and methods of health science data analysis; assessment of the cost and quality of medical care and public health programs; and the structure and role of state and local health departments.

Palo Alto, Calif.: Annual Reviews Inc., 1980.
411 pp. \$17.00 (U. S. A.), \$17.50 (elsewhere).