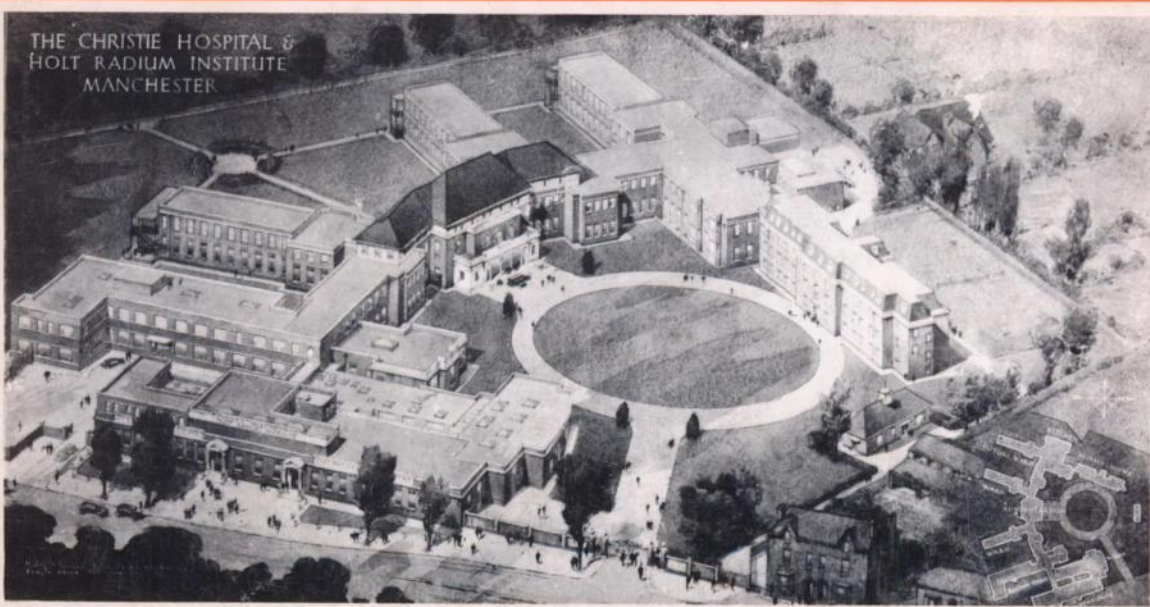


# Cancer Research

VOLUME 42 • NO. 7 CNREA 8 • PP 2523-2961

July 1982



**RIBI IMMUNOCHEM RESEARCH, INC.**  
PRODUCERS OF REFINED BIOLOGICAL RESPONSE MODIFIERS

Refined Products for Basic Microbiology  
& Immunology Research

- |   |  |
|---|--|
| <input type="checkbox"/> Refined Standard Endotoxins  | <input type="checkbox"/> Trehalose Dimycolate (P <sub>3</sub> )          |
| <input type="checkbox"/> Detoxified Endotoxins        | <input type="checkbox"/> Cell Wall Adjuvant (ACP)                        |
| <input type="checkbox"/> BCG Cell Walls (CW)          | <input type="checkbox"/> <i>C. parvum</i> PE (pyridine extract)          |
| <input type="checkbox"/> BCG Cell Wall Skeleton (CWS) | <input type="checkbox"/> <i>C. parvum</i> PER (pyridine extract residue) |

For more information:



**RIBI**  
IMMUNOCHEM  
RESEARCH, INC.

P.O. Box 1409 • Hamilton, Montana 59840 USA  
(406) 363-6214

© Ribi ImmunoChem Research, Inc. 1982

**ETHICS IN SCIENCE AND PUBLICATION**

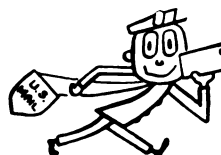
A special issue of *CBE Views*, Winter 1981. Four essays for those interested in science, ethics, and publishing.

- **How Ethical is Science**  
Patricia Woolf, *Science and Technology Project, Department of Sociology, Princeton University*
- **Ethics in Research**  
Ruth Macklin, *Department of Community Health, Albert Einstein College of Medicine*
- **Cheating in Science and Publishing**  
Lawrence K. Altman, *Science News Department, The New York Times*
- **Ethics in Publishing**  
Frank B. Golley, *Division of Environmental Biology, National Science Foundation*

Order from: Council of Biology Editors  
9650 Rockville Pike  
Bethesda, MD 20814

Price \$6.00 each including postage and handling

**Help us to  
serve you  
better.....**



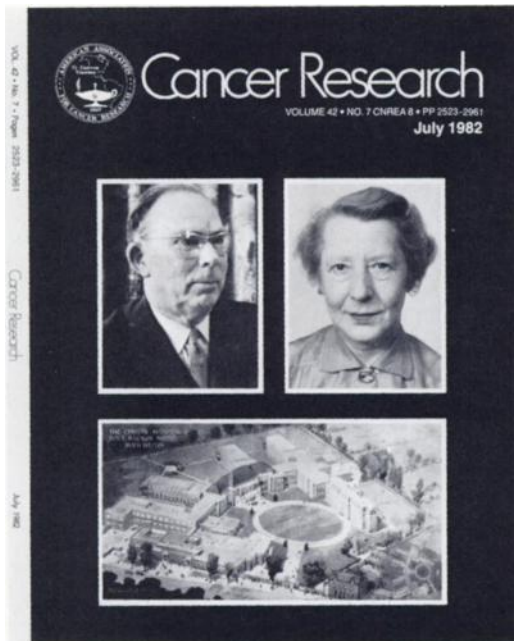
**USE  
YOUR  
ZIP  
CODE**

**Remember, your zip code  
provides faster, more direct  
delivery of your journals.  
Use it on all correspondence,  
too.**



# COVER LEGEND

---



The Christie Hospital and Holt Radium Institute is the regional radiotherapy center for the Manchester area and part of North Wales. It serves a population of about 4.5 million and is the largest unit of its kind in northwest Europe.

A radium department was started in 1913 in the basement of the Manchester Royal Infirmary. In 1915, seven hospitals agreed to pool their resources of radium for the treatment of cancer patients. In 1921, a donation from Sir Edward and Lady Margaret Holt allowed its move to a new location and began a close collaboration with the Christie Hospital, founded in 1892 by a solicitor. In 1932, unity was achieved under the present name.

During the early 1930s, there was an upsurge of interest in England in the radiotherapy of cancer. This was stimulated by the developments in nuclear physics occasioned by Ernest Rutherford's tenure at the University of Manchester, 1907 to 1918. Rutherford was active in the Radium Institute that became Holt and purchased the first radium for it (J. A. delRegato, *Int. J. Radiat. Oncol. Biol. Phys.*, 5: 539-552, 1979).

The development of clinical radiotherapy was primarily the work of James Ralston Kennedy Paterson (b. 1897). A research program was started under the guidance of Dr. Edith Paterson, his wife. The program was expanded in the Paterson Research Laboratories, named after both of them and now under Professor L. G. Lajtha.

Ralston Paterson was born in Scotland and received his medical doctorate from Edinburgh. He became director of radiotherapy at the Christie Hospital and Holt Institute in 1931 and retained the post until retirement in 1962. He was appointed professor of radiotherapy and in 1949 was awarded the CBE. His experiences and teaching are summarized in the text, *The Treatment of Malignant Disease by Radiotherapy* (Ed. 1, 1948; Ed. 2, 1963. Baltimore: Williams & Wilkins).

The Christie Hospital and Holt Radium Institute was described in the *Manchester Medical Gazette* (46: 2-4, 1966) by Dr. R. Gibb, the present director of radiotherapy.

Pictured are Drs. J. R. K. Paterson and Edith Paterson, and an architect's drawing of the hospital and institute.

We are indebted to Dr. Gibb for the information and illustrations.

M.B.S.