

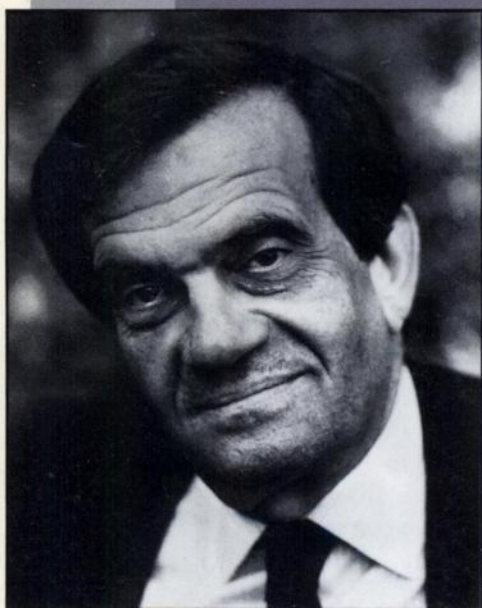
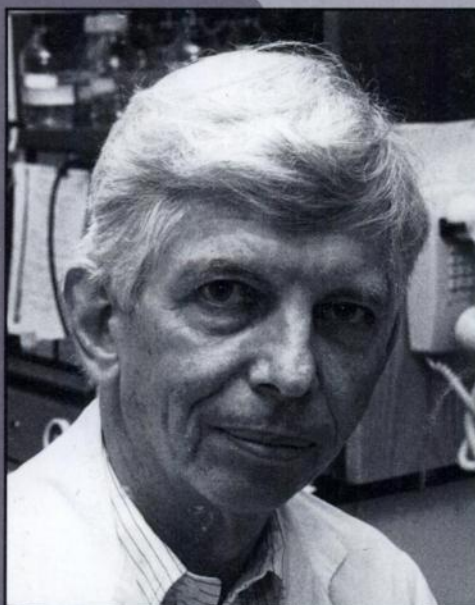
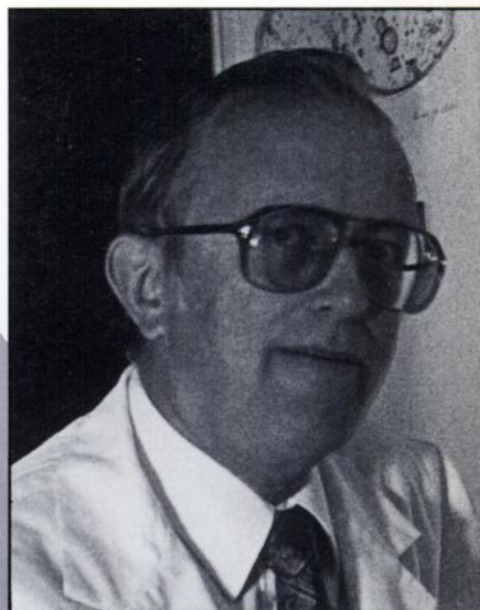
January 1, 1990



Cancer Research

VOLUME 50 • NO. 1 • PP 1-219

ISSN 0008-5472 • CNREA 8



Message from the new
Editor-in-chief—p. 1

PUBLIC HEALTH SERVICE
NATIONAL INSTITUTES OF HEALTH
NATIONAL CANCER INSTITUTE

A Senior Executive Service Vacancy

ASSOCIATE DIRECTOR

**Cancer Prevention Research Program
Division Of Cancer Prevention And Control**

Location: Rockville, Maryland

The Associate Director, Cancer Prevention Research Program, will be responsible for the overall planning, coordination and monitoring of a worldwide Cancer Prevention Program designed to provide prompt evaluation of new leads in cancer prevention. The Cancer Prevention Research Program has a staff of approximately 46 who administer a large intramural and extramural program with a budget of approximately \$36 million annually.

This is a Civil Service position in the Senior Executive Service (SES) with an annual salary compensation between ES-1 through ES-4 (currently \$68,700 to \$76,400 per annum). In addition, physicians may be eligible for a Physician's Comparability Allowance up to \$20,000 per year. (Applicants alternatively may be eligible for appointment in the Commissioned Corps of the U.S. Public Health Service.) The individual selected, if not presently in SES, must serve a one-year probationary period.

Applicants must meet the minimum educational requirements for Medical Officer, GS-602. Applicants must further meet established mandatory professional/technical and managerial/executive requirements. Applicants will be further evaluated on the degree to which they possess additional desirable qualifications in the areas of professional/technical qualifications, managerial/executive qualifications, scientific reputation/peer recognition, training and education, and honors and awards. A copy of the requirements may be obtained by contacting Ms. Dolores Guido in the Personnel Management Branch, NCI, at (301) 496-8182.

Applications for Federal Employment (SF-171), are to be sent to the above individual at:

The National Cancer Institute
Personnel Management Branch
9000 Rockville Pike
Building 31, Room 3A19
Bethesda, Maryland 20892



A current curriculum vitae and bibliography must accompany all applications for entrance into the SES. Resumes are not acceptable applications for entrance into the SES. Public Health Service Commissioned Officers wishing to enter the SES must follow the above procedures. Officers interested in performing the duties of the position *within the Commissioned Corps* may submit a resume to the above address.

Applications must be received by February 2, 1990.

SELECTION FOR THIS POSITION WILL BE BASED SOLELY ON MERIT, WITH NO DISCRIMINATION FOR NON-MERIT REASONS SUCH AS RACE, COLOR, RELIGION, SEX, NATIONAL ORIGIN, POLITICS, MARITAL STATUS, PHYSICAL HANDICAP, AGE, OR MEMBERSHIP OR NON-MEMBERSHIP IN AN EMPLOYEE ORGANIZATION.

NIH IS AN EQUAL OPPORTUNITY EMPLOYER

This space contributed as a public service.

**CANCER.
IT'S SIMPLY
NOT WHAT
IT USED
TO BE.**

Over the last 40 years, research programs supported by the American Cancer Society have made increasing progress in the treatment, detection and prevention of cancer.

In 1986 alone, the Society funded over 700 projects conducted by the most distinguished scientists and research institutions in the country.

Which is why, this year, hundreds of thousands of people will be successfully treated for the disease.

We are winning.
But we need you to help keep it that way.



Help us keep winning.

Created as a public service by
Ally Gargano/MCA Advertising LTD.

Notice to Members of the American Association for Cancer Research

Officers for 1989-1990

President: Harris Busch, Baylor College of Medicine, Houston, TX 77030

President-Elect: I. Bernard Weinstein, Columbia University College of Physicians & Surgeons, New York, NY 10032

Treasurer: Thomas J. King, Georgetown University Medical Center, Washington, DC 20007

Executive Director: Margaret Foti, AACR, 330 Market Street, 2nd Floor, Philadelphia, PA 19106.

Annual Dues

The annual dues of active members of the American Association for Cancer Research are \$100.00 and they include a subscription to the journal *Cancer Research*. The regular subscription price of *Cancer Research* for members of the Association is \$65.00 per annual volume. Corresponding members of the Association should add \$60.00 to this rate to offset postage costs. Payment of dues and changes of address of members of the Association should be sent promptly to: Member Services, American Association for Cancer Research, Inc., 330 Market Street, 2nd Floor, Philadelphia, PA 19106 (215) 440-9300.

Back Issues and Single Copy Sales of the Journal

Copies of back stock of the journal *Cancer Research* may be ordered from Waverly Press, Inc. As long as supplies permit, single copies of *Cancer Research* will be sold by this company at \$22.00 per copy for regular issues and \$22.00 per copy for Supplement issues which contain material from conferences on topics related to cancer. The annual *Proceedings of the American Association for Cancer Research* is available at \$20.00 per copy. Orders outside the U. S. and Canada add \$2.00/copy to offset postage costs.

Advertisements in *Cancer Research*

Advertisement insertion orders and copy must be received 60 days prior to the date of issue in which the advertisement is to be published. The journal is mailed approximately 7 days preceding the date of issue. Inquiries about advertising should be directed to: Gary A. Walchli, Williams and Wilkins, 428 E. Preston Street, Baltimore, MD 21202. Telephone: (301) 528-4280.

Historical Cover Themes

Readers are invited to submit themes (events, persons, institutions) for consideration for the illustrated covers of *Cancer Research*. Correspondence regarding suggested cover themes, or other matters regarding covers, should be addressed to the Cover Editor, *Cancer Research* Editorial Office.

Submission of Manuscripts

Manuscripts should be sent to the attention of: Dr. Carlo M. Croce, Editor-in-Chief, *Cancer Research* Editorial Office, American Association for Cancer Research, 330 Market Street, 2nd Floor, Philadelphia, PA 19106 (215) 440-9300. If accepted, they will be listed under one of ten categories in the Table of Contents. Please specify in a covering letter which category applies to your submission: Basic Sciences section—biochemistry and biophysics, carcinogenesis, endocrinology, immunology, molecular biology and genetics, preclinical pharmacology and experimental therapeutics, tumor biology, virology; Clinical Investigations section—clinical studies, epidemiological studies. (Final categorization in the Table of Contents is at the discretion of the Editor.) Consult the "Instructions for Authors" printed in the January issue of the journal for other submission requirements. Reprints of the "Instructions" are available upon request.

Manuscript Processing Fee

Journal policy requires that a manuscript processing fee of \$75.00 be assessed for each paper to defray the expenses incurred in the editorial review process. Each manuscript submitted for publication should be accompanied by a check (drawn on a U.S. bank) or purchase order for \$75.00 in U. S. currency, payable to *Cancer Research* at the above address. Note: If an author resubmits a manuscript that our Editors previously found unacceptable for publication, it is journal policy to consider it a new submission, assign it a new manuscript number, and charge the author another \$75.00 handling fee to cover the cost of review.

Page Charges

Accepted manuscripts will be published with the understanding that the author(s) will pay a charge of \$55.00 per printed page. Under exceptional circumstances, when no source of grant or other support exists, the author(s) may apply to Dr. Carlo M. Croce, Editor-in-Chief, at the time of submission, for a waiver of the page charges. All such applications must be countersigned by an appropriate institutional official stating that no funds are available for the payment of page charges.

Copyright and Copyright Clearance Center

The Copyright Revision Act (PL 94-553), which became effective January 1, 1978, states that the copyright of a work is vested in the author from the moment of creation. Therefore, all authors who wish to publish in *Cancer Research* must formally transfer copyright to the proprietor of the journal, the American Association for Cancer Research, Inc. It is understood by this transfer that the authors relinquish all exclusive rights of copyright ownership, including the rights of reproduction, derivation, distribution, sale, and display.

Authors who prepared their articles as part of their official duties as employees of the U. S. Federal Government are not required to transfer copyright to the American Association for Cancer Research, Inc., since these articles are considered to be in the public domain. However, it is necessary for these authors to sign the appropriate section of the transfer form. In the case of articles supported by federal grants or contracts, copyright transfer to the American Association for Cancer Research, Inc., is required. The federal government may retain a nonexclusive license to publish or republish such material.

The duly authorized agent of a commercial firm or commissioning organization must sign the transfer form if the author prepared the article as part of his or her official duties as an employee.

Appropriate forms for transfer of copyright will be sent routinely with acknowledgment of receipt of manuscripts for review. They may also be requested from the *Cancer Research* Editorial Office. The journal will not publish a paper unless the form is properly completed and signed.

Copies of articles for which the American Association for Cancer Research, Inc. owns the copyright may be made for personal or internal use, provided that the copier pay the per-copy fee of \$2.00 through the Copyright Clearance Center, Inc. This Center is a nonprofit organization through which individuals and institutions may reimburse a copyright owner for photocopying journal articles beyond what is defined as "fair use" in Sections 107 and 108 of the Copyright Revision Act of 1978.

Those who wish to photocopy *Cancer Research* articles may report the number of copies they have made, together with the fee code 0008-5472/90 \$02.00, to: Copyright Clearance Center, Inc., 27 Congress St., Salem, MA 01970. Remittances may be sent to the Center at the time of reporting or the Center will bill the user on a monthly basis. Deposit accounts and prepayment plans may also be arranged.

Between June 1978 and August 1983, a fee code appeared on the first page of all articles for which *Cancer Research* owned the copyright. For those issues, it is understood that any articles which did not carry this code are in the public domain.

Cancer Research is abstracted or indexed in *Biological Abstracts*, *Chemical Abstracts*, *Index Medicus*, *Science Citation Index*, and by the *International Cancer Research Data Bank*.

No responsibility is accepted by the Editors, by the American Association for Cancer Research, Inc., or by Waverly Press, Inc. for the opinions expressed by contributors or for the content of the advertisements.

Cancer Research (ISSN 0008-5472) is published twice a month for \$65 per year (for members of the American Association for Cancer Research) or \$265 and \$295 per year (for nonmembers) by the American Association for Cancer Research, Inc. Second-class postage paid at Baltimore, MD and additional mailing offices. POSTMASTER: Send address changes to *Cancer Research*, c/o Waverly Press, Inc., 428 E. Preston Street, Baltimore, MD 21202.

Copyright 1990 by the American Association for Cancer Research, Inc.

Cancer Research

VOLUME 50 • NUMBER 1

CONTENTS Arranged by Subject Category

Editorial

- 1 Message from the New Editor-in-Chief. Carlo M. Croce.

Review

- 2 Identification of Candidate Cancer Chemopreventive Agents and Their Evaluation in Animal Models and Human Clinical Trials: A Review. Charles W. Boone, Gary J. Kelloff, and Winfred E. Malone.

BASIC SCIENCES

Biochemistry and Biophysics

- *58 Immunoaffinity Purification of Human *O*⁶-Alkylguanine-DNA Alkyltransferase Using Newly Developed Monoclonal Antibodies. Thomas P. Brent, Mathew von Wronski, Charles N. Pegram, and Darell D. Bigner.

Carcinogenesis

- 54 Radiation-induced Osteosarcoma in Dogs after External Beam or Intraoperative Radiation Therapy. Sharon McChesney Gillette, Edward L. Gillette, Barbara E. Powers, and Stephen J. Withrow.
- 113 Morphology and Anatomic Localization of Renal Microneoplasms and Proximal Tubule Dysplasias Induced by Four Different Estrogens in the Hamster. Stanley Goldfarb and Thomas D. Pugh.
- *147 Karyometric Marker Features in Normal-appearing Glands Adjacent to Human Colonic Adenocarcinoma. Marluce Bibbo, Fabrizio Michelassi, Peter H. Bartels, Harvey Dytch, Christopher Bania, Enrique Lerma, and Anthony G. Montag.
- 164 Cytogenetic Profile of *in Vitro* Spontaneously Transformed and Chemical Tumor-derived Cell Lines Related to the Mouse Lung Alveolegenic Carcinoma. Irit Markus and Garry J. Smith.

Endocrinology

- *48 Insulin-like Growth Factor Receptor Expression and Function in Human Breast Cancer. Kevin J. Cullen, Douglas Yee, William S. Sly, James Perdue, Brian Hampton, Marc E. Lippman, and Neal Rosen.
- *78 Preservation of Steroid Hormone Receptors in Organ Cultures of Human Breast Carcinomas. Rafael Mira-y-Lopez and Liliana Ossowski.

Immunology

- *26 Modulation of Interferon Receptor Expression during Combination β -Interferon and γ -Interferon Treatment of Human Colon Carcinoma Cells. Joan H. Schiller, Sarah M. Bushmeyer, Frank J. Ruzicka, Gerald L. Princler, Connie R. Faltynek, and Ernest C. Borden.
- *32 Synergistic Potentiation of *in Vivo* Antitumor Activity of Anti-Human T-Leukemia Immunotoxins by Recombinant α -Interferon and Daunorubicin. Soichiro Yokota, Hideki Hara, Yi Luo, and Ben K. Seon.
- *89 Synthetic Peptides Reactive with Anti-Human Milk Fat Globule Membrane Monoclonal Antibodies. Pei-Xiang Xing, Kerry Reynolds, Joe J. Tjandra, Xi-Lin Tang, and Ian F. C. McKenzie.

- *152 Monoclonal Antibody to Human Osteosarcoma: A Novel *M*_{26,000} Protein Recognized by Murine Hybridoma TMMR-2. Cheng C. Tsai, Michael H. McGuire, Richard J. Mellitt, R. August Ritter III, Jianzhang Xu, Daniel J. Litwicki, and Stanford T. Roodman.

- *159 Enhancement of Monoclonal Antibody Uptake in Human Colon Tumor Xenografts following Irradiation. H. Kalofonos, G. Rowlinson, and A. A. Epenetos.

Molecular Biology and Genetics

- *44 Allelic Losses of Chromosomes 9, 11, and 17 in Human Bladder Cancer. Yvonne C. Tsai, Peter W. Nichols, Alan L. Hiti, Zippora Williams, Donald G. Skinner, and Peter A. Jones.
- *62 Changes in *c-myc* and *c-fos* Expression in a Human Tumor Cell Line following Exposure to Bifunctional Alkylating Agents. Bernard W. Futscher and Leonard C. Erickson.
- *67 Growth Properties and Tumorigenesis of MCF-7 Cells Transfected with Isogenic Mutants of *ras*^H. Connie L. Sommers, Alex Papageorge, George Wilding, and Edward P. Gelmann.
- *97 Synergistic Effect of the *v-myc* Oncogene with *H-ras* on Radioresistance. W. Gillies McKenna, Marisa C. Weiss, Brian Endlich, C. Clifton Ling, Vincent J. Bakanauskas, Martin L. Kelsten, and Ruth J. Muschel.

Preclinical Pharmacology and Experimental Therapeutics

- 15 Dose-dependent Effects of Hydralazine on Microcirculatory Function and Hyperthermic Response of Murine FSall Tumors. Joachim Kalmus, Paul Okunieff, and Peter Vaupel.
- *72 Characterization of Acquired Resistance to *cis*-Diamminedichloroplatinum(II) in BE Human Colon Carcinoma Cells. R. J. Fram, B. A. Woda, J. M. Wilson, and N. Robichaud.
- *84 Evaluation of Ricin A Chain-containing Immunotoxins Directed against the CD30 Antigen as Potential Reagents for the Treatment of Hodgkin's Disease. Andreas Engert, Francis Burrows, Wolfram Jung, Pier Luigi Tazzari, Harald Stein, Michael Pfreundschuh, Volker Diehl, and Philip Thorpe.
- 108 On the Paradoxically Concentration-dependent Metabolism of 6-Mercaptopurine in WEHI-3b Murine Leukemia Cells. Jan Liliemark, Birgitta Pettersson, Britt Engberg, Pierre Lafolie, Michèle Masquelier, and Curt Peterson.
- *138 Selective Delivery of Boron by the Melanin Precursor Analogue *p*-Boronophenylalanine to Tumors Other Than Melanoma. Jeffrey A. Coderre, John D. Glass, Ralph G. Fairchild, Peggy L. Micca, Irwin Fand, and Darrel D. Joel.

Tumor Biology

- *10 Establishment of Continuous Cultures of T-Cell Acute Lymphoblastic Leukemia Cells at Diagnosis. Ruth Gjerset, Alice Yu, and Martin Haas.
- *20 Differentiation of U-937 Histiocytic Lymphoma Cells towards Mature Neutrophilic Granulocytes by Dibutyl Cyclic Adenosine-3',5'-monophosphate. Debra L. Laskin, Andrew J. Beavis, Andrea A. Sirak, Sean M. O'Connell, and Jeffrey D. Laskin.

* Indicates studies using human-derived material.

- * 38 **Enhanced Poly(adenosine diphosphate ribose) Polymerase Activity and Gene Expression in Ewing's Sarcoma Cells.** Sarada C. Prasad, Peter J. Thraves, Kishor G. Bhatia, Mark E. Smulson, and Anatoly Dritschilo.
- * 103 **Insulin-like Growth Factor I and Transforming Growth Factor α as Autocrine Growth Factors in Human Pancreatic Cancer Cell Growth.** Eiji Ohmura, Masaki Okada, Noritaka Onoda, Yoshinobu Kamiya, Hitomi Murakami, Toshio Tsushima, and Kazuo Shizume.
- * 120 **Cross-Linked Envelope-related Markers for Squamous Differentiation in Human Lung Cancer Cell Lines.** Mark L. Levitt, Adi F. Gazdar, Herbert K. Oie, Hildegarde Schuller, and Scott M. Thacher.
- 129 **Collagen-mediated Dispersion of NBT-II Rat Bladder Carcinoma Cells.** Gordon C. Tucker, Brigitte Boyer, Jelena Gavrilovic, Hervé Emonard, and Jean Paul Thiery.
- 142 **Experimental Induction of Neoplasia in the Accessory Sex Organs of Male Lobund-Wistar Rats.** Dennis M. Hoover, Kevin L. Best, Brian K. McKenney, Roy N. Tamura, and Blake L. Neubauer.

CLINICAL AND EPIDEMIOLOGICAL INVESTIGATIONS

Clinical

- 185 **Immunomodulatory Properties and Toxicity of Interleukin 2 in Patients with Cancer.** Walter J. Urba, Ronald G. Steis, Dan L. Longo, William C. Kopp, Annette E. Maluish, Luisa Marcon, David L. Nelson, Henry C. Stevenson, and Jeffrey W. Clark.
- 193 **Effect of Treatment with 4-Hydroxyandrostenedione on the Peripheral Conversion of Androstenedione to Estrone and *in Vitro* Tumor Aromatase Activity in Postmenopausal Women with Breast Cancer.** M. J. Reed, L. C. Lai, A. M. Owen, A. Singh, N. G. Coldham, A. Purohit, M. W. Ghilchik, N. A. Shaikh, and V. H. T. James.
- 197 **Relationship between Dihydropyrimidine Dehydrogenase Activity and Plasma 5-Fluorouracil Levels with Evidence for Circadian Variation of Enzyme Activity and Plasma Drug Levels in Cancer Patients Receiving 5-Fluorouracil by Protracted Continuous Infusion.** Barry E. Harris, Ruiling Song, Seng-jaw Soong, and Robert B. Diasio.

- 202 **Anti-GD₃ Monoclonal Antibody Analysis of Childhood T-Cell Acute Lymphoblastic Leukemia: Detection of a Target Antigen for Antibody-mediated Cytolysis.** Gregory H. Reaman, Barbara J. Taylor, and William D. Merritt.
- 206 **Phase I and Clinical Pharmacological Evaluation of a Parenteral Hexamethylmelamine Formulation.** Matthew M. Ames, Ronald L. Richardson, John S. Kovach, Charles G. Moertel, and Michael J. O'Connell.

Epidemiological

- 169 **A Prospective, Population-based Study of Androstenedione, Estrogens, and Prostatic Cancer.** Elizabeth Barrett-Connor, Cedric Garland, Janice B. McPhillips, Kay-Tee Khaw, and Deborah L. Wingard.
- 174 **Quantitative Evaluation of the Radon and Lung Cancer Association in a Case Control Study of Chinese Tin Miners.** Jay H. Lubin, You-lin Qiao, Philip R. Taylor, Shu-Xiang Yao, Arthur Schatzkin, Bao-Lin Mao, Jian-Yu Rao, Xiang-Zhen Xuan, and Jun-Yao Li.
- 181 **Decline of the Hemoglobin Adduct of 4-Aminobiphenyl during Withdrawal from Smoking.** Malcolm Maclure, Matthew S. Bryant, Paul L. Skipper, and Steven R. Tannenbaum.

* * *

- 211 **Announcements**
 Eighty-first Annual Meeting of the AACR
 AACR Special Conferences in Cancer Research
 Future Annual Meetings of the AACR
 Collected Perspectives in Cancer Research
 Recent Deaths
 Calendar of Events
- 212 **Errata**
 K. A. Foon, 49: 1621-1639, 1989.
 R. Larsson and P. Cerutti, 49: 5627-5632, 1989.
- 213 **Instructions for Authors**
- 219 **Author Index**

NOTE: AACR forms available in the back of this issue--

- 1990 Employment Register Forms and Instructions
- Application for Associate Membership
- Advance Registration Form for the 81st Annual Meeting