

## Common Breast Cancer Susceptibility Alleles and the Risk of Breast Cancer for *BRCA1* and *BRCA2* Mutation Carriers: Implications for Risk Prediction

Antonis C. Antoniou<sup>1</sup>, Jonathan Beesley<sup>2</sup>, Lesley McGuffog<sup>1</sup>, Olga M. Sinilnikova<sup>3</sup>, Sue Healey<sup>2</sup>, Susan L. Neuhausen<sup>4</sup>, Yuan Chun Ding<sup>4</sup>, Timothy R. Rebbeck<sup>5</sup>, Jeffrey N. Weitzel<sup>6</sup>, Henry T. Lynch<sup>7</sup>, Claudine Isaacs<sup>8</sup>, Patricia A. Ganz<sup>9</sup>, Gail Tomlinson<sup>10</sup>, Olufunmilayo I. Olopade<sup>11</sup>, Fergus J. Couch<sup>12</sup>, Xianshu Wang<sup>12</sup>, Noralane M. Lindor<sup>13</sup>, Vernon S. Pankratz<sup>14</sup>, Paolo Radice<sup>15</sup>, Siranoush Manoukian<sup>16</sup>, Bernard Peissel<sup>16</sup>, Daniela Zaffaroni<sup>16</sup>, Monica Barile<sup>17</sup>, Alessandra Viel<sup>18</sup>, Anna Allavena<sup>19</sup>, Valentina Dall'Olio<sup>20</sup>, Paolo Peterlongo<sup>15</sup>, Csilla I. Szabo<sup>21</sup>, Michal Zikan<sup>22</sup>, Kathleen Claes<sup>23</sup>, Bruce Poppe<sup>23</sup>, Lenka Foretova<sup>24</sup>, Phuong L. Mai<sup>25</sup>, Mark H. Greene<sup>25</sup>, Gad Rennert<sup>26</sup>, Flavio Lejbkovicz<sup>26</sup>, Gord Glendon<sup>27</sup>, Hilmi Ozcelik<sup>28,29</sup>, Irene L. Andrulis<sup>27,28,29,30</sup> for the Ontario Cancer Genetics Network, Mads Thomassen<sup>31</sup>, Anne-Marie Gerdes<sup>32</sup>, Lone Sunde<sup>33</sup>, Dorthe Cruger<sup>34</sup>, Uffe Birk Jensen<sup>35</sup>, Maria Caligo<sup>36</sup>, Eitan Friedman<sup>37</sup>, Bella Kaufman<sup>38</sup>, Yael Laitman<sup>37</sup>, Roni Milgrom<sup>37</sup>, Maya Dubrovsky<sup>37</sup>, Shimrit Cohen<sup>37</sup>, Ake Borg<sup>39,43</sup>, Helena Jernström<sup>39,43</sup>, Annika Lindblom<sup>40,43</sup>, Johanna Rantala<sup>40,43</sup>, Marie Stenmark-Askmal<sup>41,13</sup>, Beatrice Melin<sup>42,43</sup> for SWE-*BRCA*, Kate Nathanson<sup>44</sup>, Susan Domchek<sup>44</sup>, Ania Jakubowska<sup>45</sup>, Jan Lubinski<sup>45</sup>, Tomasz Huzarski<sup>45</sup>, Ana Osorio<sup>46</sup>, Adriana Lasa<sup>47</sup>, Mercedes Durán<sup>48</sup>, Maria-Isabel Tejada<sup>49</sup>, Javier Godino<sup>50</sup>, Javier Benitez<sup>51</sup>, Ute Hamann<sup>52</sup>, Mieke Krieger<sup>53,63</sup>, Nicole Hoogerbrugge<sup>54,63</sup>, Rob B. van der Luijt<sup>55,63</sup>, Christi J. van Asperen<sup>56,63</sup>, Peter Devilee<sup>57,63</sup>, E.J. Meijers-Heijboer<sup>58,63</sup>, Marinus J. Blok<sup>59,63</sup>, Cora M. Aalfs<sup>60,63</sup>, Frans Hogervorst<sup>61,63</sup>, Matti Rookus<sup>62,63</sup> for HEBON, Margaret Cook<sup>1,136</sup>, Clare Oliver<sup>1,136</sup>, Debra Frost<sup>1,136</sup>, Don Conroy<sup>64,136</sup>, D. Gareth Evans<sup>65,136</sup>, Fiona Lalloo<sup>65,136</sup>, Gabriella Pichert<sup>66,136</sup>, Rosemarie Davidson<sup>67,136</sup>, Trevor Cole<sup>68,136</sup>, Jackie Cook<sup>69,136</sup>, Joan Paterson<sup>70,136</sup>, Shirley Hodgson<sup>71,136</sup>, Patrick J. Morrison<sup>72,136</sup>, Mary E. Porteous<sup>73,136</sup>, Lisa Walker<sup>74,136</sup>, M. John Kennedy<sup>75,136</sup>, Huw Dorkins<sup>76,136</sup>, Susan Peock<sup>1,136</sup> for EMBRACE, Andrew K. Godwin<sup>77</sup>, Dominique Stoppa-Lyonnet<sup>78,92</sup>, Antoine de Pauw<sup>78,92</sup>, Sylvie Mazoyer<sup>79,92</sup>, Valérie Bonadona<sup>80,81,92</sup>, Christine Lasset<sup>80,81,92</sup>, Hélène Dreyfus<sup>82,83,92</sup>, Dominique Leroux<sup>82,83,92</sup>, Agnès Hardouin<sup>84,92</sup>, Pascaline Berthet<sup>84,92</sup>, Laurence Faivre<sup>85,86,92</sup> for GEMO, Catherine Loustalot<sup>86,92</sup>, Tetsuro Noguchi<sup>87,92</sup>, Hagay Sobol<sup>87,92</sup>, Etienne Rouleau<sup>88,92</sup>, Catherine Nogues<sup>89,92</sup>, Marc Fréney<sup>90,92</sup>, Laurence Vénat-Bouvet<sup>91,92</sup> for GEMO, John L. Hopper<sup>93,137</sup>, Mary B. Daly<sup>77,137</sup>, Mary B. Terry<sup>94,137</sup>, Esther M. John<sup>95,137</sup>, Sandra S. Buys<sup>96,137</sup>, Yosuf Yassin<sup>97,137</sup>, Alexander Miron<sup>97,137</sup>, David Goldgar<sup>98,137</sup> for the Breast Cancer Family Registry, Christian F. Singer<sup>99</sup>, Anne Catharina Dressler<sup>99</sup>, Daphne Gschwantler-Kaulich<sup>99</sup>, Georg Pfeiler<sup>99</sup>, Thomas V.O. Hansen<sup>100</sup>, Lars Jnson<sup>100</sup>, Bjarni A. Agnarsson<sup>101</sup>, Tomas Kirchhoff<sup>102</sup>, Kenneth Offit<sup>102</sup>, Vincent Devlin<sup>102</sup>, Ana Dutra-Clarke<sup>102</sup>, Marion Piedmonte<sup>103</sup>, Gustavo C. Rodriguez<sup>104</sup>, Katie Wakeley<sup>105</sup>, John F. Boggess<sup>106</sup>, Jack Basil<sup>107</sup>, Peter E. Schwartz<sup>108</sup>, Stephanie V. Blank<sup>109</sup>, Amanda Ewart Toland<sup>110</sup>, Marco Montagna<sup>111</sup>, Cinzia Casella<sup>111</sup>, Evgeny Imyanitov<sup>112</sup>, Laima Tihomirova<sup>113</sup>, Ignacio Blanco<sup>114</sup>, Conxi Lazaro<sup>114</sup>, Susan J. Ramus<sup>115</sup>, Lara Sucheston<sup>116</sup>, Beth Y. Karlan<sup>117</sup>, Jenny Gross<sup>117</sup>, Rita Schmutzler<sup>118</sup>, Barbara Wappenschmidt<sup>118</sup>, Christoph Engel<sup>119</sup>, Alfons Meindl<sup>120</sup>, Magdalena Lochmann<sup>121</sup>, Norbert Arnold<sup>122</sup>, Simone Heidemann<sup>123</sup>, Raymonda Varon-Mateeva<sup>124</sup>, Dieter Niederacher<sup>125</sup>, Christian Sutter<sup>126</sup>, Helmut Deissler<sup>127</sup>, Dorothea Gadzicki<sup>128</sup>, Sabine Preisler-Adams<sup>129</sup>, Karin Kast<sup>130</sup>, Ines Schönbuchner<sup>131</sup>, Trinidad Caldes<sup>132</sup>, Miguel de la Hoya<sup>132</sup>, Kristiina Aittomäki<sup>133</sup>, Heli Nevanlinna<sup>133</sup>, Jacques Simard<sup>134</sup>, Amanda B. Spurdle<sup>2,135</sup>, Helene Holland<sup>2,135</sup>, Xiaoqing Chen<sup>2,135</sup> for kConFab, Radka Platte<sup>1</sup>, Georgia Chenevix-Trench<sup>2</sup>, and Douglas F. Easton<sup>1</sup> on behalf of CIMBA

### Abstract

The known breast cancer susceptibility polymorphisms in *FGFR2*, *TNRC9/TOX3*, *MAP3K1*, *LSP1*, and 2q35 confer increased risks of breast cancer for *BRCA1* or *BRCA2* mutation carriers. We evaluated the associations of 3 additional single nucleotide polymorphisms (SNPs), rs4973768 in *SLC4A7/NEK10*, rs6504950 in *STXBP4/COX11*, and rs10941679 at 5p12, and reanalyzed the previous associations using additional carriers in a sample of 12,525 *BRCA1* and 7,409 *BRCA2* carriers. Additionally, we investigated potential interactions between SNPs and assessed the implications for risk prediction. The minor alleles of rs4973768 and rs10941679 were associated with increased breast cancer risk for *BRCA2* carriers (per-allele HR = 1.10, 95% CI: 1.03–1.18,  $P = 0.006$  and HR = 1.09, 95% CI: 1.01–1.19,  $P = 0.03$ , respectively). Neither SNP was associated with breast cancer risk for *BRCA1* carriers, and rs6504950 was not associated with breast cancer for either *BRCA1* or *BRCA2* carriers. Of the 9 polymorphisms investigated, 7 were associated with breast cancer for *BRCA2* carriers (*FGFR2*, *TOX3*, *MAP3K1*, *LSP1*, 2q35, *SLC4A7*, 5p12,  $P = 7 \times 10^{-11} - 0.03$ ), but only *TOX3* and 2q35 were associated with the risk for *BRCA1* carriers ( $P = 0.0049$ , 0.03, respectively). All risk-associated polymorphisms appear to interact multiplicatively on breast cancer risk for mutation carriers. Based on the joint genotype distribution of the 7 risk-associated SNPs in *BRCA2*

mutation carriers, the 5% of *BRCA2* carriers at highest risk (i.e., between 95th and 100th percentiles) were predicted to have a probability between 80% and 96% of developing breast cancer by age 80, compared with 42%

**Authors' Affiliations:**<sup>1</sup>Center for Cancer Genetic Epidemiology, Department of Public Health and Primary Care, University of Cambridge, Cambridge, United Kingdom; <sup>2</sup>Queensland Institute of Medical Research, Brisbane, Australia; <sup>3</sup>Unité Mixte de Génétique Constitutionnelle des Cancers Fréquents, Centre Hospitalier Universitaire de Lyon/Centre Léon Bérard, Lyon, France; <sup>4</sup>Department of Population Sciences, Beckman Research Institute of the City of Hope, Duarte, California; <sup>5</sup>Abramson Cancer Center and Center for Clinical Epidemiology and Biostatistics, The University of Pennsylvania School of Medicine, Philadelphia, Pennsylvania; <sup>6</sup>City of Hope National Medical Center, Duarte, California; <sup>7</sup>Creighton University, Omaha, Nebraska; <sup>8</sup>Lombardi Comprehensive Cancer Center, Georgetown University, Washington, District of Columbia; <sup>9</sup>Jonsson Comprehensive Cancer Center at the University of California, Los Angeles, California; <sup>10</sup>University of Texas Health Science Center, San Antonio, Texas; <sup>11</sup>University of Chicago Medical Center, Chicago, Illinois; <sup>12</sup>Department of Laboratory Medicine and Pathology, Mayo Clinic, Rochester, Minnesota; <sup>13</sup>Department of Medical Genetics, Mayo Clinic, Rochester, Minnesota; <sup>14</sup>Department of Health Sciences Research, Mayo Clinic, Rochester, Minnesota; <sup>15</sup>Unit of Genetic Susceptibility to Cancer, Department of Experimental Oncology and Molecular Medicine, Fondazione IRCCS Istituto Nazionale Tumori (INT), Milan, Italy and IFOM, Fondazione Istituto FIRC di Oncologia Molecolare, Milan, Italy; <sup>16</sup>Unit of Medical Genetics, Department of Preventive and Predictive Medicine, Fondazione IRCCS Istituto Nazionale dei Tumori (INT), Milan, Italy; <sup>17</sup>Division of Cancer Prevention and Genetics, Istituto Europeo di Oncologia (IEO), Milan, Italy; <sup>18</sup>Division of Experimental Oncology 1, Centro di Riferimento Oncologico (CRO), IRCCS, Aviano (PN), Italy; <sup>19</sup>Department of Genetics, Biology and Biochemistry, University of Turin, Turin, Italy; <sup>20</sup>Cogentech, Consortium for Genomics Technology, Milan, Italy; <sup>21</sup>Department of Laboratory Medicine and Pathology, Mayo Clinic College of Medicine, Rochester, Minnesota; <sup>22</sup>Department of Biochemistry and Experimental Oncology, First Faculty of Medicine, Charles University, Prague, Czech Republic; <sup>23</sup>Center for Medical Genetics, Ghent University Hospital, Ghent, Belgium; <sup>24</sup>Department of Cancer Epidemiology and Genetics, Masaryk Memorial Cancer Institute, Brno, Czech Republic; <sup>25</sup>Clinical Genetics Branch, US National Cancer Institute, Rockville, Maryland; <sup>26</sup>Carmel Medical Center and B. Rappaport Faculty of Medicine, Technion, Haifa, Israel; <sup>27</sup>Ontario Cancer Genetics Network (OCGN), Cancer Care Ontario, Toronto, Ontario, Canada; <sup>28</sup>Fred A. Litwin Center for Cancer Genetics, Samuel Lunenfeld Research Institute, Mount Sinai Hospital, New York; <sup>29</sup>Department of Laboratory Medicine and Pathobiology, University of Toronto, Toronto, Ontario, Canada; <sup>30</sup>Department of Molecular Genetics, University of Toronto, Toronto, Ontario, Canada; <sup>31</sup>Odense University Hospital, Department of Clinical Genetics, Odense, Denmark; <sup>32</sup>Department of Clinical Genetics, Rigshospitalet and Odense University Hospital, Odense, Denmark; <sup>33</sup>Department of Clinical Genetics, Aalborg Hospital, Aalborg, Denmark; <sup>34</sup>Department of Clinical Genetics, Vejle Hospital, Vejle, Denmark; <sup>35</sup>Department of Clinical Genetics, Aarhus University Hospital, Aarhus, Denmark; <sup>36</sup>Division of Surgical, Molecular and Ultrastructural Pathology, Department of Oncology, University of Pisa and Pisa University Hospital, Pisa, Italy; <sup>37</sup>The Susanne Levy Gertner Oncogenetics Unit, Sheba Medical Center, Tel-Hashomer, Israel; <sup>38</sup>Oncology Institute, Sheba Medical Center, Tel-Hashomer, Israel; <sup>39</sup>Department of Oncology, Lund University, Lund, Sweden; <sup>40</sup>Department of Molecular Medicine and Surgery, Karolinska Institutet, Stockholm, Sweden; <sup>41</sup>Department of Oncology, Linköping University, Linköping, Sweden; <sup>42</sup>Department of Radiation Sciences, Oncology, Umeå University, Umeå, Sweden; <sup>43</sup>Swedish Breast Cancer Study, Sweden; <sup>44</sup>University of Pennsylvania, Philadelphia, Pennsylvania; <sup>45</sup>International Hereditary Cancer Center, Department of Genetics and Pathology, Pomeranian Medical University, Szczecin, Poland; <sup>46</sup>Human Genetics Group, Human Cancer Genetics Programme, Spanish National Cancer Research Center, Madrid, Spain; <sup>47</sup>Genetics Service, Hospital de la Sant Creu i Sant Pau, Barcelona, Spain; <sup>48</sup>Institute of Biology and Molecular Genetics, Universidad de Valladolid (IBGM-UVA), Valladolid, Spain; <sup>49</sup>Molecular Genetics Laboratory (Department of Biochemistry), Cruces Hospital Barakaldo, Bizkaia, Spain; <sup>50</sup>Oncology Service, Hospital clínico universitario Lozano Blesa, Zaragoza, Spain and Instituto Aragones de Ciencias de la Salud (I+CS); <sup>51</sup>Human Genetics Group and Genotyping Unit, Human Cancer Genetics Programme, Spanish National Cancer Research Center, Madrid, Spain; <sup>52</sup>Molecular Genetics of Breast Cancer, Deutsches Krebsforschungszentrum (DKFZ), Heidelberg, Germany; <sup>53</sup>Department of Medical Oncology, Family Cancer Clinic, Erasmus MC-

Daniel den Hoed Cancer Center, Rotterdam, the Netherlands; <sup>54</sup>Hereditary Cancer Clinic, Radboud University, Nijmegen Medical Center, Nijmegen, the Netherlands; <sup>55</sup>Department of Medical Genetics, University Medical Center Utrecht, Utrecht, the Netherlands; <sup>56</sup>Department Of Clinical Genetics, Leiden University Medical Center, Leiden, the Netherlands; <sup>57</sup>Department of Human Genetics, Department of Pathology, Leiden University Medical Center, Leiden, the Netherlands; <sup>58</sup>Department of Clinical Genetics, VU Medical Center, Amsterdam, the Netherlands; <sup>59</sup>Department of Genetics and Cell Biology, University Medical Center, Maastricht, the Netherlands; <sup>60</sup>Department of Clinical Genetics, Academic Medical Center, Amsterdam, Amsterdam, the Netherlands; <sup>61</sup>Family Cancer Clinic, Netherlands Cancer Institute, Amsterdam, the Netherlands; <sup>62</sup>Department of Epidemiology, Netherlands Cancer Institute, Amsterdam, the Netherlands; <sup>63</sup>Hereditary Breast and Ovarian Cancer Group Netherlands (HEBON); <sup>64</sup>Department of Oncology, University of Cambridge, Cambridge, United Kingdom; <sup>65</sup>Genetic Medicine, Manchester Academic Health Sciences Center, Central Manchester University Hospitals NHS Foundation Trust, Manchester, United Kingdom; <sup>66</sup>Clinical Genetics, Guy's and St. Thomas' NHS Foundation Trust, London, United Kingdom; <sup>67</sup>Ferguson-Smith Center for Clinical Genetics, Glasgow, United Kingdom; <sup>68</sup>West Midlands Regional Genetics Service, Birmingham Women's Hospital Healthcare NHS Trust, Edgbaston, Birmingham, United Kingdom; <sup>69</sup>Sheffield Clinical Genetics Service, Sheffield Children's Hospital, Sheffield, United Kingdom; <sup>70</sup>Department of Clinical Genetics, East Anglian Regional Genetics Service, Addenbrookes Hospital, Cambridge, United Kingdom; <sup>71</sup>Clinical Genetics Department, St Georges Hospital, University of London, London, United Kingdom; <sup>72</sup>Northern Ireland Regional Genetics Center, Belfast City Hospital, Belfast, United Kingdom; <sup>73</sup>South East of Scotland Regional Genetics Service, Western General Hospital, Edinburgh, United Kingdom; <sup>74</sup>Oxford Regional Genetics Service, Churchill Hospital, Oxford, United Kingdom; <sup>75</sup>Cancer Genetics Program, Hope Directorate, St James's Hospital, Dublin, Ireland; <sup>76</sup>North West Thames Regional Genetics Service, Kennedy-Galton Center, Harrow, United Kingdom; <sup>77</sup>Women's Cancer Program, Department of Medical Oncology, Fox Chase Cancer Center, Philadelphia, Pennsylvania; <sup>78</sup>INSERM UMR509, Service de Génétique Oncologique, Institut Curie, Université Paris-Descartes, Paris, France; <sup>79</sup>Equipe labellisée LIGUE 2008, UMR5201 CNRS, Centre Léon Bérard, Université de Lyon, Lyon, France; <sup>80</sup>CNRS UMR5558, Université Lyon 1, Lyon, France; <sup>81</sup>Unité de Prévention et d'Epidémiologie Génétique, Centre Léon Bérard, Lyon, France; <sup>82</sup>Department of Genetics, Centre Hospitalier Universitaire de Grenoble, Grenoble, France; <sup>83</sup>Institut Albert Bonniot, Université de Grenoble, Grenoble, France; <sup>84</sup>Centre François Baclesse, Caen, France; <sup>85</sup>Centre de Génétique, Centre Hospitalier Universitaire de Dijon, Dijon, France; <sup>86</sup>Centre de Lutte Contre le Cancer Georges François Leclerc, Dijon, France; <sup>87</sup>INSERM UMR599, Département d'Oncologie Génétique, Institut Paoli-Calmettes, Marseille, France; <sup>88</sup>INSERM U735, Centre René Huguenin, Saint-Cloud, France; <sup>89</sup>Epidémiologie Clinique, Oncogénétique, Centre René Huguenin, Saint-Cloud, France; <sup>90</sup>Centre Antoine Lacassagne, Nice, France; <sup>91</sup>Department of Oncology, Centre Hospitalier Universitaire de Limoges, Limoges, France; <sup>92</sup>GEMO study: Cancer Genetics Network "Groupe Génétique et Cancer", Fédération Nationale des Centres de Lutte Contre le Cancer, France; <sup>93</sup>The University of Melbourne, Melbourne, Australia; <sup>94</sup>Columbia University, New York, New York; <sup>95</sup>Cancer Prevention Institute of California (formerly the Northern California Cancer Center), Fremont and Stanford University School of Medicine, Stanford, California; <sup>96</sup>Huntsman Cancer Institute, University of Utah Health Sciences Centre, Salt Lake City, Utah; <sup>97</sup>Dana-Farber Cancer Institute, Boston, Massachusetts; <sup>98</sup>Department of Dermatology, University of Utah, Salt Lake City, Utah; <sup>99</sup>Department of Obstetrics and Gynecology, Medical University of Vienna, Vienna, Austria; <sup>100</sup>Department of Clinical Biochemistry, Rigshospitalet, University of Copenhagen, Copenhagen, Denmark; <sup>101</sup>Department of Pathology, University Hospital & University of Iceland School of Medicine, Reykjavik, Iceland; <sup>102</sup>Clinical Genetics Service, Department of Medicine, Memorial Sloan-Kettering Cancer Center, New York, New York; <sup>103</sup>GOG Statistical and Data Center, Roswell Park Cancer Institute, Buffalo, New York; <sup>104</sup>NorthShore University Health System, Evanston Northwestern Healthcare, Evanston, Illinois; <sup>105</sup>Tufts University, New England Medical Center, Boston, Massachusetts; <sup>106</sup>University of North Carolina, Chapel Hill, North Carolina; <sup>107</sup>St. Elizabeth Medical Center, Edgewood, Kentucky; <sup>108</sup>Yale University School of Medicine, New Haven, Connecticut; <sup>109</sup>New York University School of Medicine, New York, New York; <sup>110</sup>Departments of

to 50% for the 5% of carriers at lowest risk. Our findings indicated that these risk differences might be sufficient to influence the clinical management of mutation carriers. *Cancer Res*; 70(23); 9742–54. ©2010 AACR.

## Introduction

Pathogenic mutations in *BRCA1* and *BRCA2* confer elevated risks of breast and ovarian cancer. Cancer risk estimates have been found to vary by the age at diagnosis and the cancer site of the proband that led to the family ascertainment (1–3). Studies have demonstrated significant variation in the breast cancer risks between families that segregate mutations in *BRCA1* and *BRCA2*, according to the strength of family history (2, 4). Such evidence suggests that genetic or other factors that cluster in families could modify the cancer risks conferred by *BRCA1* and *BRCA2* mutations.

Internal Medicine and Molecular Virology, Immunology and Medical Genetics, Division of Human Cancer Genetics, Comprehensive Cancer Center, The Ohio State University, Columbus, Ohio; <sup>111</sup>Instituto Oncologico Veneto—IRCCS, Immunology and Molecular Oncology Unit, Padua, Italy; <sup>112</sup>N.N. Petrov Institute of Oncology, St.-Petersburg, Russia; <sup>113</sup>Latvian Biomedical Research and Study Center, Riga, Latvia; <sup>114</sup>Hereditary Cancer Program, Catalan Institute of Oncology-IDIBELL, Barcelona, Spain; <sup>115</sup>Gynaecological Oncology Unit, UCL EGA Institute for Women's Health, University College London, London, United Kingdom; <sup>116</sup>Department of Cancer Prevention and Control, Roswell Park Cancer Institute, Buffalo, New York; <sup>117</sup>Women's Cancer Research Institute at the Samuel Oschin Comprehensive Cancer Institute, Cedars-Sinai Medical Center, Los Angeles, California; <sup>118</sup>Center of Familial Breast and Ovarian Cancer, Department of Obstetrics and Gynaecology and Center for Integrated Oncology (CIO), University of Cologne, Cologne, Germany; <sup>119</sup>Institute for Medical Informatics, Statistics and Epidemiology, University of Leipzig, Leipzig, Germany; <sup>120</sup>Department of Obstetrics and Gynaecology, Division of Tumor Genetics, Klinikum rechts der Isar, Technical University Munich, Munich, Germany; <sup>121</sup>Department of Obstetrics and Gynaecology, Division of Tumor Genetics, Klinikum rechts der Isar, Technical University Munich, Munich, Germany; <sup>122</sup>Department of Obstetrics and Gynaecology, University Hospital of Schleswig-Holstein, Campus Kiel, Christian-Albrechts University Kiel, Kiel, Germany; <sup>123</sup>Institute of Human Genetics, University Hospital of Schleswig-Holstein, Campus Kiel, Christian-Albrechts University Kiel, Kiel, Germany; <sup>124</sup>Institute of Human Genetics, Campus Virchow Klinikum, Charité Berlin, Berlin, Germany; <sup>125</sup>Department of Obstetrics and Gynaecology, Division of Molecular Genetics, University Hospital Düsseldorf, Heinrich-Heine University Düsseldorf, Düsseldorf, Germany; <sup>126</sup>Institute of Human Genetics, Division of Molecular Diagnostics, University Heidelberg, Heidelberg, Germany; <sup>127</sup>Department of Obstetrics and Gynaecology, University Hospital Ulm, Ulm, Germany; <sup>128</sup>Institute of Cell and Molecular Pathology, Hannover Medical School, Hannover, Germany; <sup>129</sup>Institute of Human Genetics, University Hospital Muenster, Muenster, Germany; <sup>130</sup>Department of Obstetrics and Gynaecology, University Hospital Carl Gustav Carus, Technical University Dresden, Dresden, Germany; <sup>131</sup>Institute of Human Genetics, Division of Medical Genetics, University Wuerzburg, Wuerzburg, Germany; <sup>132</sup>Molecular Oncology Laboratory, Hospital Clinico San Carlos, Madrid, Spain; <sup>133</sup>Departments of Obstetrics and Gynecology (HN) and Clinical Genetics (KA), Helsinki University Central Hospital, Helsinki, Finland; <sup>134</sup>Canada Research Chair in Oncogenetics, Cancer Genomics Laboratory, Centre Hospitalier Universitaire de Québec and Laval University, Québec, Canada; <sup>135</sup>Kathleen Cuningham Consortium for Research into Familial Breast Cancer—Peter MacCallum Cancer Center, Melbourne, Australia; <sup>136</sup>Epidemiological study of *BRCA1* and *BRCA2* mutation carriers; <sup>137</sup>Breast Cancer Family Registry

**Note:** Supplementary data for this article are available at Cancer Research Online (<http://cancerres.aacrjournals.org/>).

**Corresponding Author:** Antonis C. Antoniou, Strangeways Research Laboratory, Worts Causeway, Cambridge CB1 8RN, United Kingdom. Phone: 44 1223 740163; Fax: 44 1223 740159; E-mail: antonis@sr.l.cam.ac.uk

doi: 10.1158/0008-5472.CAN-10-1907

©2010 American Association for Cancer Research.

Direct evidence of such modifiers of risk has been demonstrated through recent large-scale association studies conducted by the Consortium of Investigators of Modifiers of *BRCA1/2* (CIMBA; ref. 5). These studies evaluated common genetic variants (single nucleotide polymorphisms; SNPs) that have been shown to be associated with breast cancer risk for women from the general population through genome-wide association studies (GWAS; refs. 6–9). The CIMBA studies suggest that of the 6 variants investigated so far (rs2981582 in *FGFR2*, rs3803662 in *TOX3/TNRC9*, rs889312 in *MAP3K1*, rs3817198 in *LSP1*, rs13281615 on 8q24, and rs13387042 on 2q35), only the *TOX3* and 2q35 polymorphisms were associated with breast cancer risk for *BRCA1* mutation carriers. Five of the polymorphisms, all but the variant in the 8q24 region, were associated with breast cancer risk for *BRCA2* mutation carriers. The estimated relative risk for the 8q24 SNP was consistent with that for the general population, but was not statistically significant.

Since these investigations, 11 other breast cancer susceptibility variants have been identified through GWAS (10–14) including 3 SNPs, rs4973768 in *SLC44A7/NEK10*, rs6504950 in *STXBP4/COX11*, and rs10941679 on 5p12. To evaluate whether these 3 polymorphisms are also associated with breast cancer risk for *BRCA1* and *BRCA2* mutation carriers we genotyped these polymorphisms in the CIMBA cohort. We also genotyped additional mutation carriers for the 6 polymorphisms previously investigated by CIMBA (6, 7). Here we present the updated results based on a larger number of female *BRCA1* and *BRCA2* mutation carriers. We also evaluated the evidence for interactions between the variants and the implications for risk prediction for *BRCA1* and *BRCA2* mutation carriers.

## Materials and Methods

### Subjects

Female carriers of pathogenic mutations in *BRCA1* and *BRCA2* were recruited through the CIMBA initiative (5). Thirty-nine studies contributed data for mutation carriers who were successfully genotyped for 1 or more of the 9 SNPs investigated. The large majority of carriers were recruited through cancer genetics clinics offering genetic testing, and enrolled into national or regional studies. Some carriers were identified by population-based sampling of cases, and some by community recruitment (e.g., in Ashkenazi Jewish populations). Eligibility to participate in CIMBA is restricted to carriers of pathogenic *BRCA1* or *BRCA2* mutations who were 18 years or older at recruitment. Information collected included the year of birth; mutation description, including nucleotide position and base change; age at last follow-up; ages at breast and ovarian cancer diagnoses; and age or date at bilateral prophylactic mastectomy. Information was also available on the country of residence, defined to be the



country of the clinic at which the carrier family was recruited to the study. Related women were identified through a unique family identifier. Women were included in the analysis if they carried mutations that were pathogenic according to generally recognized criteria (15). Women who self-reported as "nonwhite" and those who carried pathogenic mutations in both *BRCA1* and *BRCA2* were excluded from the current analysis. All carriers participated in clinical or research studies at the host institutions under ethically approved protocols. Further details of the CIMBA initiative can be found elsewhere (5).

### Genotyping

Genotyping was performed using either the iPLEX or Taqman platforms. To ensure genotyping consistency, all genotyping centers were required to adhere to the CIMBA genotyping quality control criteria that are described in detail in Appendix 1 (Supplementary Material). After excluding samples that failed quality control, 19,934 unique mutation carriers (12,525 *BRCA1*, 7,409 *BRCA2*) from 39 studies had an observed genotype for 1 or more of the SNPs and were included in the analysis (Supplementary Table S1).

### Statistical analysis

The aim of the analysis was to evaluate the association between each genotype and breast cancer risk. The phenotype of each woman was defined by her age at diagnosis of breast cancer or her age at last follow-up. For this purpose, women were censored at the age of the first breast cancer diagnosis, ovarian cancer diagnosis, or bilateral prophylactic mastectomy or the age at last observation. Mutation carriers censored at ovarian cancer diagnosis were considered unaffected. Because mutation carriers were not sampled randomly with respect to their disease status, standard methods of survival analysis (such as Cox regression) may lead to biased estimates of the hazard ratios (HR; ref. 16). We, therefore, conducted the analysis by modeling the retrospective likelihood of the observed genotypes conditional on the disease phenotypes as previously described (15). The effect of each SNP was modeled either as a per-allele HR (multiplicative model) or as separate HR for heterozygotes and homozygotes, and these were estimated on the log scale. Where there was evidence of deviation from the multiplicative model, dominant and recessive models were also fitted. The HR were assumed to be independent of age (i.e., we used a Cox proportional hazards model). The assumption of proportional hazards was tested by adding a "genotype  $\times$  age" interaction term to the model to fit models in which the HR changed with age. Analyses were carried out using the pedigree analysis software MENDEL (17). We examined between-study heterogeneity by comparing the models that allowed for study-specific log-HR against models in which the same log-HR was assumed to apply to all studies. All analyses were stratified by study group and country of residence and used calendar year and cohort-specific breast cancer incidences for *BRCA1* and *BRCA2* (4). Risk reducing salpingo-oophorectomy was not considered in the analysis as it is not expected to be associated with the underlying SNP genotype (i.e., it is not a confounder) and previous analyses

of these SNPs suggested no marked effect on the associations after adjustment (6, 7). We used a robust variance-estimation approach to allow for the nonindependence of related carriers (18).

To investigate whether our results were influenced by any of our assumptions we performed additional sensitivity analyses. If any of the SNPs were associated with disease survival, the inclusion of prevalent cases could influence the HR estimates. We therefore repeated our analysis by excluding mutation carriers diagnosed more than 5 years prior to the age at recruitment into the study.

We further investigated for interactions between the SNPs and estimated the absolute risk of developing breast cancer based on the joint distribution of all SNPs that were significantly associated with risk for either *BRCA1* or *BRCA2* mutation carriers. Details of these methods are described in Appendix 2.

The proportions of the modifying variance explained by the set of associated SNPs were estimated by  $\ln(c)/\sigma^2$ , where  $c$  is the estimated coefficient of variation in incidences associated with SNP (19, 20) and  $\sigma^2$  is the estimated modifying variance (1.32 and 1.73 for *BRCA1* and *BRCA2* mutation carriers, respectively; ref. 4). We estimated the total proportion of the modifying variance due to all SNPs by adding the individual proportions, that is, by assuming that the loci combined multiplicatively.

## Results

After the exclusions described in the methods section, a total of 12,525 *BRCA1* and 7,409 *BRCA2* mutation carriers had an eligible genotype for at least 1 of the 9 SNPs and were included in the analysis (total 19,934 mutation carriers, Supplementary Table S1). Of these, 9,933 had an observed genotype for all 9 SNPs. Subjects were followed until the first breast cancer diagnosis (10,546), ovarian cancer diagnosis (1,981), or bilateral prophylactic mastectomy (567). The remaining subjects were censored at the age they were last observed (6,840). Only subjects censored at a breast cancer diagnosis were assumed to be affected in the analysis. Table 1 summarizes the key characteristics of this CIMBA cohort.

The results for the 3 newly investigated polymorphisms in the *SLC4A7/NEK10*, 5p12, and *STXBP4/COX11* regions are shown in Table 2. rs4973768 in *SLC4A7/NEK10* was associated with breast cancer risk for *BRCA2* mutation carriers, where each copy of the minor allele was estimated to confer an HR of 1.10 (95% CI: 1.03–1.18,  $P_{\text{trend}} = 0.006$ ). There was no evidence that this SNP was associated with breast cancer risk for *BRCA1* mutation carriers (HR 1.03,  $P_{\text{trend}} = 0.26$ ). There was no evidence of heterogeneity in the study HR estimates ( $P = 0.08$  and 0.66 for *BRCA1* and *BRCA2*, respectively; Figs. 1 and 2). Models that allowed for an age-dependent HR did not fit better than the models with a constant HR ( $P = 0.72$  and 0.93 for *BRCA1* and *BRCA2*, respectively).

The 5p12 SNP rs10941679 was also associated with breast cancer risk for *BRCA2* mutation carriers (2df  $P = 0.022$  and  $P_{\text{trend}} = 0.032$ ). Although the HR estimate for the heterozygote carriers of the minor allele was greater than the risk for the homozygote carriers, there was no significant evidence that the

**Table 1.** Summary characteristics for the 19,934 eligible *BRCA1* and *BRCA2* carriers used in the analysis

Characteristic	<i>BRCA1</i>		<i>BRCA2</i>	
	Unaffected	Breast cancer	Unaffected	Breast cancer
Number	5,989	6,536	3,399	4,010
Person-years follow-up	255,973	268,566	150,499	150,499
Median age at censure (IQR)	42 (34–51)	40 (35–47)	43 (34–53)	43 (37–50)
Age at censure, <i>N</i> (%)				
<30	851 (14.2)	565 (8.6)	485 (14.3)	185 (4.6)
30–39	1,707 (28.5)	2,584 (39.5)	898 (26.4)	1,254 (31.3)
40–49	1,812 (30.3)	2,275 (34.8)	908 (26.7)	1,507 (37.6)
50–59	1,042 (17.4)	833 (12.7)	629 (18.5)	741 (18.5)
60–69	393 (6.6)	219 (3.4)	310 (9.1)	252 (6.3)
70+	184 (3.1)	60 (0.9)	169 (5.0)	71 (1.8)
Year of birth, <i>N</i> (%)				
Before 1920	36 (0.6)	44 (0.7)	30 (0.9)	40 (1.0)
1920–1929	146 (2.4)	212 (3.2)	108 (3.2)	176 (4.4)
1930–1939	388 (6.5)	532 (8.1)	245 (7.2)	437 (10.9)
1940–1949	833 (13.9)	1,349 (20.6)	427 (12.6)	902 (22.5)
1950–1959	1,294 (21.6)	1,945 (29.8)	685 (20.2)	1,145 (28.9)
1960 and later	3,292 (55.0)	2,454 (37.6)	1,904 (56.0)	1,310 (32.7)

Abbreviation: IQR, interquartile range.

heterogeneity model (separate HR parameter for heterozygote and homozygotes) fit better than the multiplicative model for the effect of the minor allele of this SNP ( $P = 0.07$ ). Under the multiplicative model, the per-allele HR was estimated to be 1.09 (95% CI: 1.01–1.19,  $P_{\text{trend}} = 0.032$ ). A model that assumed that the underlying model was dominant fitted equally well ( $HR_{\text{dominant}} = 1.15$ , 95% CI: 1.04–1.27,  $P_{\text{dominant}} = 0.008$ ). The 5p12 polymorphism was not associated with breast cancer for *BRCA1* mutation carriers (HR = 0.96, 95% CI: 0.90–1.02,  $P_{\text{trend}} = 0.16$ ). There was no evidence that the HR vary across studies ( $P_{\text{het}} = 0.33$  and 0.77 for *BRCA1* and *BRCA2*, respectively; Figs. 1 and 2), or that the HR vary with age for either *BRCA1* or *BRCA2* mutation carriers ( $P = 0.45$  and 0.37, respectively).

The *STXBP4/COX11* SNP rs6504950 was not associated with breast cancer risk for either *BRCA1* (per-allele HR = 1.02, 95% CI: 0.96–1.08,  $P_{\text{trend}} = 0.59$ ) or *BRCA2* mutation carriers (per-allele HR = 1.03, 95% CI: 0.95–1.11,  $P_{\text{trend}} = 0.47$ ). The HR did not vary significantly with age for either *BRCA1* ( $P = 0.15$ ) or *BRCA2* ( $P = 0.59$ ) mutation carriers. There was no evidence of heterogeneity in the HR estimates between studies ( $P_{\text{het}} = 0.43$  and 0.10 for *BRCA1* and *BRCA2*, respectively; Figs. 1 and 2).

To investigate whether our results may have been biased by the inclusion of prevalent cancers we repeated the analysis after excluding carriers diagnosed with breast or ovarian cancer more than 5 years prior to their recruitment into the study (i.e., long-term survivors). Individuals from studies in which the date/age at recruitment was not provided were also excluded from this analysis. The results for all 3 SNPs are summarized in Supplementary Table S2. The HR estimates were very similar to the analysis that included prevalent cancers. However, the  $P$  values were larger and the 5p12 SNP was no longer significantly associated with breast cancer

risk ( $P_{\text{trend}} = 0.13$ ,  $P_{\text{dominant}} = 0.05$ ) possibly due to the smaller number of mutation carriers included in this analysis.

The updated results for SNPs, rs2981582 in *FGFR2*, rs3803662 in *TOX3/TNRC9*, rs889312 in *MAP3K1*, rs3817198 in *LSPI*, rs13281615 in 8q24, and rs13387042 in 2q35, which include additional mutation carriers genotyped since they were originally published, are shown in Table 3. The sample size increase varied from 1,347 to 1,840 mutation carriers for the latest published SNPs in *LSPI*, 8q24, and 2q35 and from 3,413 to 3,854 mutation carriers for SNPs in *FGFR2*, *TOX3/TNRC9*, and *MAP3K1*. The pattern of associations of these SNPs with breast cancer risk for *BRCA1* and *BRCA2* mutation carriers were similar to that found from the previously published CIMBA analyses, with the same SNPs significantly associated at the 5% level (6, 7). In the combined set of *BRCA1* mutation carriers, only the *TOX3/TNRC9* and 2q35 polymorphisms were associated with risk ( $P_{\text{trend}} = 0.0049$  and 2df  $P = 0.01$ , respectively). In contrast, 5 of the 6 SNPs were associated with the risk of developing breast cancer in the combined set of *BRCA2* mutation carriers. The most significant association was for the *FGFR2* polymorphism ( $P_{\text{trend}} = 6.8 \times 10^{-11}$ ) in which each copy of the minor allele was estimated to confer an HR of 1.30 (95% CI: 1.20–1.40), followed by *TOX3/TNRC9* (per-allele HR = 1.17, 95% CI: 1.07–1.27,  $P_{\text{trend}} = 0.00029$ ). These 2 SNPs had the largest increase in sample size since the previous analysis, and the significance of each association was correspondingly greater ( $P_{\text{trend}} = 1.7 \times 10^{-8}$  and 0.009 in the previous analysis for *FGFR2* and *TOX3/TNRC9*, respectively). The significance of associations between the other SNPs (*LSPI*, *MAP3K1*, 2q35) and breast cancer risk for *BRCA2* mutation carriers were similar to those reported previously (Table 3). The 8q24 SNP

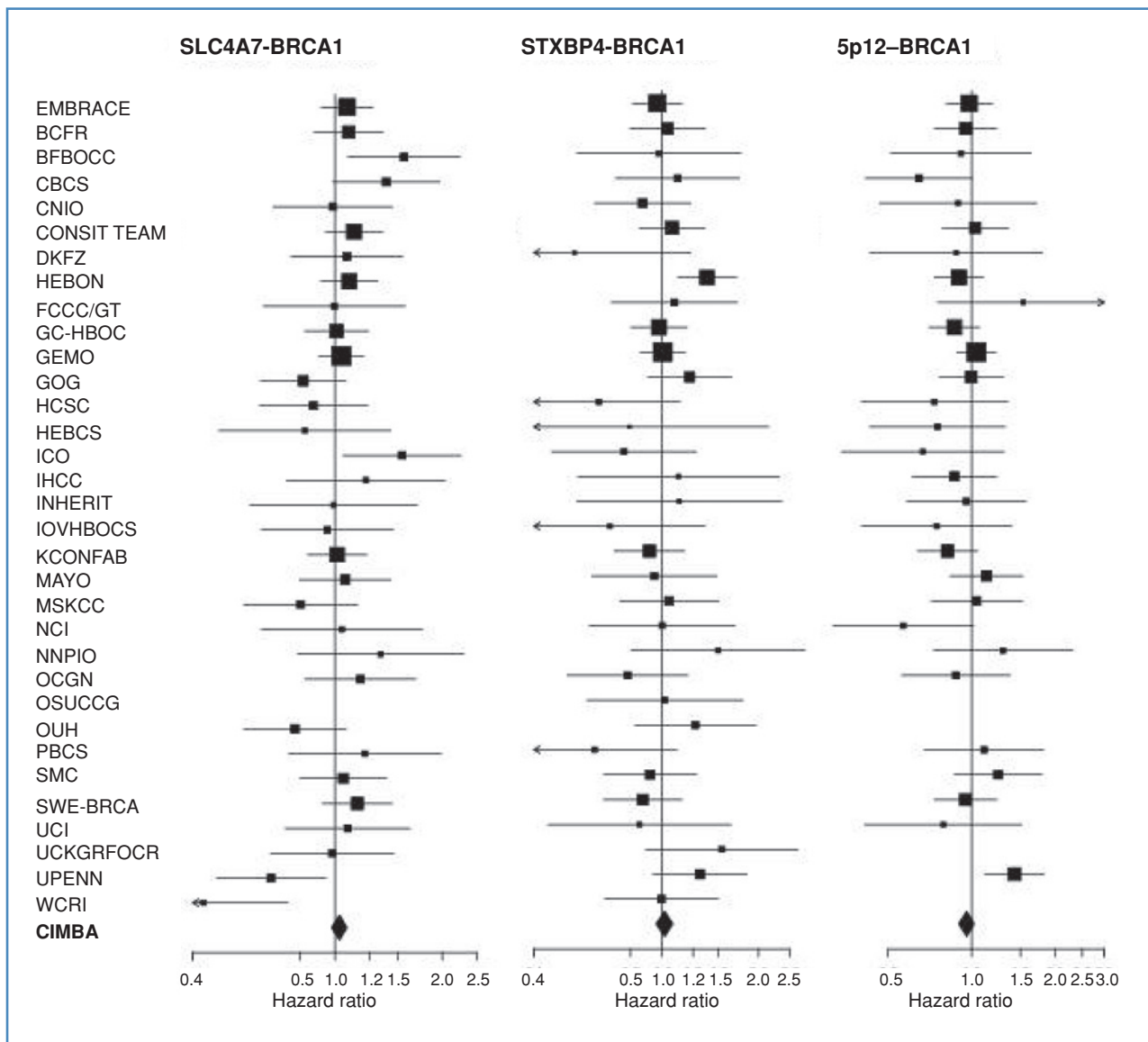
**Table 2.** Genotype frequencies by disease status and hazard ratio estimates

Mutation/gene	Genotype	Unaffected (%)	Affected (%)	HR	95% CI	P	
SLC4A7/NEK10 rs4973768	<i>BRCA1</i>	CC	1,249 (25.8)	1,380 (25.4)	1.00		
		CT	2,440 (50.4)	2,706 (49.7)	1.00	0.92–1.09	
		TT	1,155 (23.8)	1,353 (24.9)	1.06	0.96–1.17	
		2df test					0.40
		Per allele			1.03	0.98–1.08	0.26
	<i>BRCA2</i>	CC	735 (26.4)	782 (23.2)	1.00		
		CT	1,359 (48.8)	1,651 (49.0)	1.11	0.98–1.25	
		TT	689 (24.8)	937 (27.8)	1.22	1.06–1.40	
		2df test					0.024
		Per allele			1.10	1.03–1.18	0.0064
STXBP4/COX11 rs6504950	<i>BRCA1</i>	GG	2,613 (53.5)	2,953 (53.4)	1.00		
		GA	1,915 (39.2)	2,179 (39.4)	1.01	0.94–1.10	
		AA	357 (7.3)	385 (7.2)	1.04	0.90–1.19	
		2df test					0.86
		Per allele			1.02	0.96–1.08	0.59
	<i>BRCA2</i>	GG	1,556 (55.3)	1,808 (53.2)	1.00		
		GA	1,054 (37.5)	1,351 (39.7)	1.07	0.97–1.19	
		AA	203 (7.2)	242 (7.1)	0.99	0.82–1.20	
		2df test					0.36
		Per allele			1.03	0.95–1.11	0.47
5p12 rs10941679	<i>BRCA1</i>	AA	2,490 (56.3)	2,991 (56.7)	1.00		
		AG	1,626 (36.8)	1,929 (36.6)	0.97	0.89–1.05	
		GG	304 (6.9)	351 (6.7)	0.90	0.77–1.04	
		2df test					0.34
		Per allele			0.96	0.90–1.02	0.16
	<i>BRCA2</i>	AA	1,535 (59.2)	1,809 (55.4)	1.00		
		AG	900 (34.7)	1,264 (38.7)	1.16	1.04–1.29	
		GG	156 (6.0)	190 (5.8)	1.05	0.85–1.30	
		2df test					0.022
		Per allele			1.09	1.01–1.19	0.032
	Dominant			1.15	1.04–1.27	0.0083	

was not associated with breast cancer risk for *BRCA2* mutation carriers (per-allele HR = 1.06, 95% CI: 0.98–1.13,  $P_{\text{trend}} = 0.13$ ), but the number of additional *BRCA2* mutation carriers included in this analysis was only 628, and the 95% CI still included the estimated relative risk in population-based studies. For all SNPs except *TNRC9/TOX3*, the inclusion of newly genotyped mutation carriers resulted in somewhat attenuated HR estimates, but narrower CI. The dominant model remained the most parsimonious model for the 2q35 SNP for both *BRCA1* and *BRCA2* carriers.

We evaluated all pairwise interactions between the SNPs that were associated with breast cancer risks for *BRCA1* and *BRCA2* separately (Supplementary Table S3). There was no evidence of any departure from a log-additive model for the *TOX3/TNRC9* and 2q35 SNPs on the breast cancer risk for *BRCA1* mutation carriers ( $P = 0.22$ ) or for any pairwise combination of the 7 SNPs associated with *BRCA2* breast cancer risk ( $P \geq 0.07$ ).

Figure 3A shows the distribution of the combined HR across the 7 SNPs associated with breast cancer for *BRCA2* mutation carriers, based on the estimates from the CIMBA sample and assuming that all SNPs interact multiplicatively. The HR varied from 1 for *BRCA2* mutation carriers who were homozygous for the protective allele at all loci, to 5.75 for those who were homozygous for the risk allele at all loci. The median, 5th percentile HR, and 95th percentile HR were 1.9, 1.3, and 3.0, respectively. Figure 3B translates the combined HR into absolute risks of developing breast cancer by age 80. The estimated risk of developing breast cancer by 80 for *BRCA2* mutation carriers varies from 42% to 96%. The median cumulative breast cancer risk is 64% (5th and 95th percentile risk 50% and 80%, respectively). Figure 4 shows the age-specific cumulative risks of developing breast cancer in *BRCA2* mutation carriers by the combined genotype distribution at the 7 associated SNPs. The risk of developing breast cancer by age 50 for the 5% of the



**Figure 1.** Study-specific per-allele HR estimates for *BRCA1* mutation carriers for SNPs: rs4973768 in *SLC4A7/NEK10*, rs6504950 in *STXBP4/COX11*, and rs10941679 in the 5p12. The area of the square is proportional to the inverse of the variance of the estimate. Horizontal lines indicate 95% CI.

mutation carriers at lowest risk is between 10% and 13%, compared with 29% to 47% for the 5% of the mutation carriers at highest risk. For comparison, we computed the cumulative risks using a risk score based on the published per-allele odds ratios (OR) for each SNP (all 9) in population-based studies (Supplementary Figure S1). The predicted combined HR and cumulative risks based on the median, the 5th and 95th percentiles of the genotype distribution were similar to those based on the CIMBA estimates.

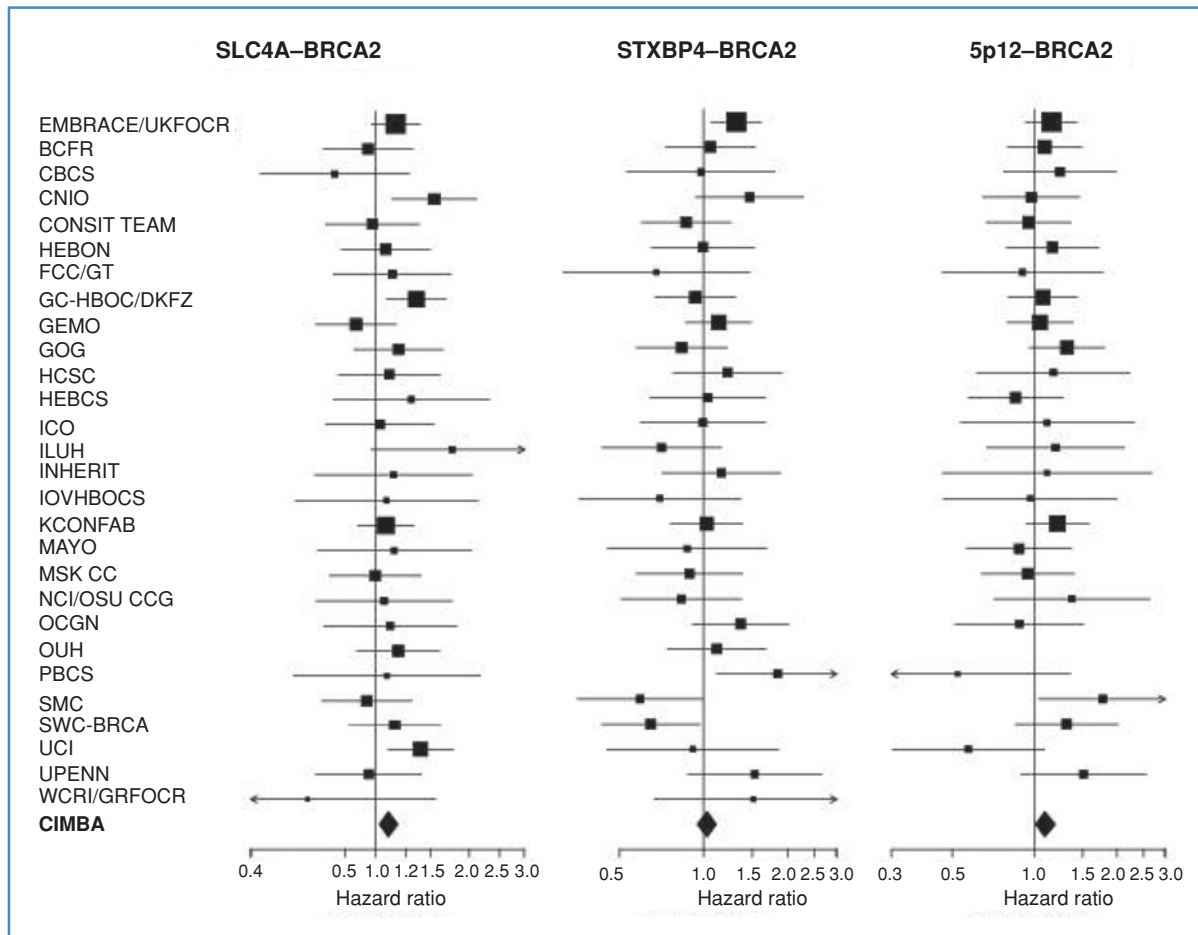
The average risk of developing breast cancer for *BRCA1* mutation carriers by age 80 was previously estimated to be approximately 66% (4). Based on the combined *TOX3/TNRC9-2q35* genotype distribution, 13% of *BRCA1* mutation carriers who were homozygous for the protective allele at both loci will have a risk of developing breast cancer of 61%,

compared with 72% for the 2% of the *BRCA1* mutation carriers who have the at-risk genotype at both loci.

## Discussion

We have investigated 9 breast cancer susceptibility variants identified through GWAS, for their associations with breast cancer risk for *BRCA1* and *BRCA2* mutation carriers. Of the 3 new polymorphisms investigated, the *SLC4A7/NEK10* and 5p12 SNPs were associated with breast cancer risk for *BRCA2* mutation carriers. For each SNP, the per-allele HR was similar to the published relative risks in population-based studies. For *BRCA1* mutation carriers, neither SNP showed an association with breast cancer risk, and in each case the 95% CI for the HR





**Figure 2.** Study-specific per-allele HR estimates for *BRCA2* mutation carriers for SNPs: rs4973768 in *SLC4A7/NEK10*, rs6504950 in *STXBP4/COX11*, and rs10941679 in the 5p12. The area of the square is proportional to the inverse of the variance of the estimate. Horizontal lines indicate 95% CI.

excluded the published point estimate for the general population. The *STXBP4/COX11* SNP was not associated with breast cancer risk for either *BRCA1* or *BRCA2* mutation carriers. However, we cannot rule out that this SNP confers an HR for breast cancer in *BRCA2* mutation carriers similar to the OR estimated from population-based studies as our CI includes that estimate (10). Given the magnitude of the effect in population-based studies, the current CIMBA sample of *BRCA2* mutation carriers would have limited power to detect such an association (power of 31% at a 0.05 significance level). The estimated effects were not materially altered by inclusion of prevalent breast cancers in the analysis.

We have also incorporated newly recruited mutation carriers in the analysis of the 6 SNPs that we previously investigated (*FGFR2*, *TNRC9/TOX3*, *MAP3K1*, *LSPI*, 8q24, and 2q35; refs. 6, 7). The conclusions from these analyses were qualitatively similar to those previously reported, but there were some differences in the estimated HR for the risk associated SNPs. With the exception of *TOX3/TNRC9* in *BRCA2*, the HR were somewhat attenuated, perhaps reflecting a "winner's curse" effect (i.e., HR overestimation) in the original investigation (21). The addition of new samples strengthened the

associations for the *FGFR2* and *TOX3/TNRC9* SNPs, which are the SNPs with largest estimated HR, but the association *P* values increased marginally for the other SNPs.

We focused on the associations of these SNPs with the risk of breast cancer for *BRCA1* and *BRCA2* mutation carriers. For this purpose, individuals who developed ovarian cancer first, were censored at the ovarian cancer diagnosis and were assumed to be unaffected in the analysis. If any of these polymorphisms were associated with ovarian cancer risk, this could potentially lead to biased estimates of the breast cancer HR. However, previous analyses of these SNPs, which excluded mutation carriers who developed ovarian cancer, yielded similar HR estimates to the analysis that included these carriers (6). Moreover, there is no evidence from population-based studies of ovarian cancer that any of these SNPs are associated with ovarian cancer risk in the general population (22, 23). A separate CIMBA study to estimate the effects of these polymorphisms on ovarian cancer risk for mutation carriers, assessed within a competing risks analysis framework is currently ongoing.

The associations between the 9 SNPs and breast cancer risk differed substantially between *BRCA1* and *BRCA2* muta-



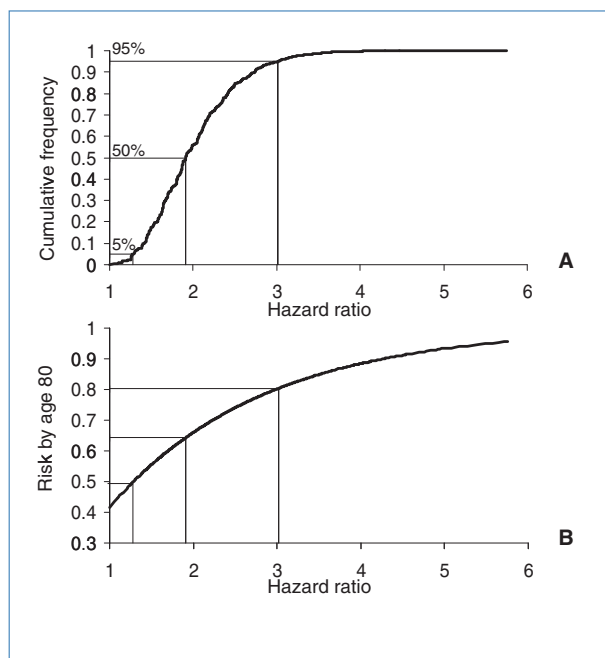
**Table 3.** Hazard ratio estimates for previously published associations using additional mutation carriers

Mutation/SNP	Including newly recruited mutation carriers				Original analysis (6, 7)			
	Unaffected/ affected	HR <sup>a</sup>	95% CI	P <sup>b</sup>	Unaffected/ affected	HR <sup>a</sup>	95% CI	P <sup>b</sup>
<i>FGFR2</i> rs2981582								
<i>BRCA1</i>	3,822/4,446	1.03	0.97–1.09	0.31	2,874/3,154	1.02	0.95–1.09	0.60
<i>BRCA2</i>	2,160/2,716	1.30	1.20–1.40	$6.8 \times 10^{-11}$	1427/1836	1.32	1.20–1.45	$1.7 \times 10^{-8}$
<i>TOX3/TNRC9</i> rs3803662								
<i>BRCA1</i>	3,911/4,492	1.09	1.03–1.16	0.0049	3,031/3,263	1.11	1.03–1.19	0.0043
<i>BRCA2</i>	2,135/2,679	1.17	1.07–1.27	0.00029	1,426/1,829	1.15	1.03–1.27	0.009
<i>MAP3K1</i> rs889312								
<i>BRCA1</i>	4,152/4,404	0.99	0.93–1.05	0.63	3,272/3,469	0.99	0.93–1.06	0.86
<i>BRCA2</i>	2,282/2,840	1.10	1.01–1.19	0.022	1,557/1,967	1.12	1.02–1.24	0.020
<i>LSP1</i> rs3817198								
<i>BRCA1</i>	4,480/5,383	1.05	0.99–1.11	0.11	4,203/4,781	1.05	0.99–1.11	0.090
<i>BRCA2</i>	2,636/3,266	1.14	1.06–1.23	0.00079	2404/3030	1.16	1.07–1.25	0.00028
8q24 rs13281615								
<i>BRCA1</i>	4,730/5,498	1.00	0.95–1.05	0.93	4,254/4,762	1.00	0.94–1.05	0.88
<i>BRCA2</i>	2,723/3,338	1.06	0.98–1.13	0.13	2,408/3,025	1.06	0.98–1.14	0.15
2q35 rs13387042								
<i>BRCA1</i>	4,554/5,383				4,268/4,763			
Heterozygotes		1.14	1.04–1.25			1.18	1.07–1.30	
Homozygotes		1.05	0.94–1.16			1.08	0.97–1.21	
2df test				0.010				0.003
Per allele		1.02	0.96–1.07	0.57		1.03	0.98–1.09	0.24
Dominant		1.11	1.01–1.21	0.026		1.14	1.04–1.25	0.0047
<i>BRCA2</i>	2,646/3,300				2,407/3,042			
Heterozygotes		1.16	1.03–1.32			1.21	1.06–1.37	
Homozygotes		1.11	0.97–1.28			1.12	0.97–1.31	
2df test				0.048				0.015
Per allele		1.05	0.98–1.13	0.17		1.06	0.98–1.14	0.14
Dominant		1.15	1.02–1.29	0.021		1.18	1.04–1.33	0.0079

<sup>a</sup>Per allele Hazard Ratio unless specified<sup>b</sup>Multiplicative model unless specified

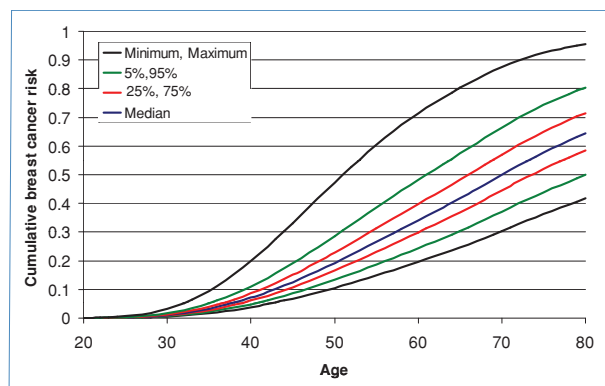
tion carriers. Seven of the polymorphisms were associated with the risk of developing breast cancer for *BRCA2* mutation carriers (*FGFR2*, *TOX3/TNRC9*, *MAP3K1*, *LSP1*, 2q35, *SLC4A7/NEK10*, 5p12). However, despite the larger sample size for *BRCA1* carriers, only *TOX3/TNRC9* and 2q35 were associated with the risk of breast cancer for *BRCA1* mutation carriers. Significant differences in the HR between *BRCA1* and *BRCA2* were observed for *FGFR2* ( $P = 3 \times 10^{-6}$ ), *MAP3K1* ( $P = 0.03$ ), and 5p12 ( $P = 0.01$ ). We have previously suggested that such differences could be explained by the differential effects of these SNPs by tumor subtype, specifically by estrogen receptor (ER) status. Analyses by the Breast Cancer Association Consortium have indicated that many of the susceptibility loci confer higher relative risks for ER-positive disease, with weaker or absent association for ER-negative disease (24). Interestingly, the *TOX3* and 2q35 SNPs, which exhibit associations for *BRCA1* carriers, show the strongest evidence for association with ER-negative breast cancer risk in the general population, consistent with

the observation that *BRCA1* tumors are predominantly ER-negative whereas *BRCA2* tumors are predominantly ER-positive (25). More specifically, these 2 SNPs were the only SNPs associated significantly with breast cancer expressing basal markers (M. Garcia-Closas, personal communication), the predominant subtype of breast cancer in *BRCA1* carriers. The 5p12 and *SLC4A7/NEK10* SNPs analyzed in this study also conferred higher relative risks for ER-positive disease, consistent with this hypothesis (10, 11). Therefore, our results provide further evidence for the distinct nature of the *BRCA1* related breast tumors. Overall, the 7 SNPs associated with breast cancer risk for *BRCA2* mutation carriers were estimated to account for approximately 4% of the genetic variability of breast cancer in *BRCA2*, whereas the *TOX3/TNRC9* and 2q35 were estimated to account for 0.4% of the genetic variability in breast cancer risk in *BRCA1*. The estimated contribution to *BRCA1* breast cancer risk variability is slightly lower than previously estimated (7), as a result of the attenuated HR estimates in the present analysis.



**Figure 3.** A, cumulative distribution function of the combined hazard ratio for breast cancer risk for *BRCA2* mutation carriers at SNPs: rs2981582 in *FGFR2*, rs3803662 in *TOX3/TNRC9*, rs889312 in *MAP3K1*, rs3817198 in *LSP1*, rs13387042 in 2q35 region, rs4973768 in *SLC4A7/NEK10*, and rs10941679 in the 5p12 region (see Materials and Methods for definition of combined HR). B, predicted cumulative risk of developing breast cancer by age 80 for *BRCA2* mutation carriers by the combined HR at the above SNPs.

Each variant was estimated to be associated with a modest HR. The largest per-allele HR estimate was 1.30 for the *FGFR2* association for *BRCA2* mutation carriers. However, the combined effect of the susceptibility variants on risk can be much larger. Analysis of interactions between pairs of loci indicated that the combined effects were consistent with a multiplicative model. By defining a risk score based on this assumption, we estimated empirically that the



**Figure 4.** Age-specific cumulative breast cancer risks for *BRCA2* mutation carriers by percentiles of the combined genotype distribution at SNPs: rs2981582 in *FGFR2*, rs3803662 in *TOX3/TNRC9*, rs889312 in *MAP3K1*, rs3817198 in *LSP1*, rs13387042 in 2q35 region, rs4973768 in *SLC4A7/NEK10*, and rs10941679 in the 5p12 region.

highest 5% of the risk distribution had an HR of 2.64 (95% CI: 1.83–3.80,  $P = 2.3 \times 10^{-7}$ ) compared with the lowest 5%; this is very close to the predicted HR based on an assumed multiplicative model. We also conducted a similar analysis based on the estimated relative risks from population-based studies, and the quantile-specific risk estimates were similar, indicating that the HR were not exaggerated due to overfitting. Because we only considered pairwise interactions, it is possible that more complex interactions have been missed. However, given our results from the pairwise interactions and empirical score analysis, the multiplicative assumption seems plausible. A model with higher order interactions could lead to more powerful discrimination, but even with a study of this size there is insufficient power to fit higher order interactions reliably.

As *BRCA2* mutations confer elevated risks of breast cancer, the combined HR estimates translate to large differences in the absolute risk of developing breast cancer between genotypes. Based on the combined associations of the 7 SNPs we estimate that the 5% of *BRCA2* mutation carriers at lowest risk will have a lifetime risk of developing breast cancer of 50% or lower whereas the 5% at highest risk will have a lifetime risk of 80% or higher. Such differences in risk could potentially be informative for genetic counseling purposes for classifying *BRCA2* mutation carriers into different risk groups (26). A previous segregation analysis estimated that, based on the assumed distribution of modifiers of breast cancer risk, *BRCA2* mutation carriers at the 5th percentile of risk distribution will have lifetime risk of developing the disease of 23% and those at the 95th percentile will have a lifetime risk of almost 100% (4). This analysis suggests that much greater improvements in risk profiling of carriers could be realized in the future if further modifiers of risk are identified. In contrast to *BRCA2*, only a limited number of risk modifying polymorphisms have been identified for *BRCA1*. This could reflect the fact that GWAS have so far focused on breast cancer patients unselected for tumor subtypes. Ongoing GWAS in *BRCA1* mutation carriers and in ER-negative disease in the general population will be valuable in this respect.

In summary, our results indicate that the majority of the common breast cancer susceptibility variants identified through GWAS are associated with breast cancer risk for *BRCA2* mutation carriers, to a similar relative extent as in the general population. Their combined association results in substantial risk differences in absolute risk across SNP genotype categories. Such differences could inform genetic counseling and lead to improved management of mutation carriers. Future studies in both the general population and mutation carriers that include GWAS, denser genotyping, exome, and whole genome sequencing are likely to identify further variants associated with cancer risk for mutation carriers and will ultimately lead to more accurate risk prediction for these women.

#### Disclosure of Potential Conflicts of Interest

No potential conflicts of interest were disclosed.

## Acknowledgments

Cancer Research UK provided financial support for this work. A.C.A. is a Senior Cancer Research UK Cancer Research Fellow. D.F.E. is Cancer Research UK Principal Research Fellow.

*University of California Irvine (UCI)*

S.L.N. and Y.C.D. were supported by NIH CA74415.

*MAGIC*

The study is supported by NIH grants R01-CA083855 and R01-CA10277. City of Hope Clinical Cancer Genetics Community Network and the Hereditary Cancer Research Registry, supported in part by Award Number RC4CA153828 (PI: J.N. Weitzel) from the National Cancer Institute and the Office of the Director, National Institutes of Health.

*Mayo Clinic Study (MAYO)*

The Mayo Clinic study was supported in part by the Breast Cancer Research Foundation (BCRF), a grant from Susan G. Komen for the Cure, the Mayo Clinic Breast Cancer SPORE (P50-CA116201), and NIH grants CA122340 and CA128978 to F.J.C.

*CONSORZIO STUDI ITALIANI TUMORI EREDITARI ALLA MAMMELLA (CONSTIT TEAM)*

The Italian study (CONSORZIO STUDI ITALIANI TUMORI EREDITARI ALLA MAMMELLA, CONSTIT TEAM) is funded in part by grants from Fondazione Italiana per la Ricerca sul Cancro (Special Project "Hereditary tumors"), Associazione Italiana per la Ricerca sul Cancro (4017), Ministero della Salute (RFPS-2006-3-340203, Extraordinary National Cancer Program 2006 "Alleanza contro il Cancro", and "Progetto Tumori Femminili"), Ministero dell'Università e Ricerca (RBLA03-BETH) and by funds from Italian citizens who allocated the 5 × 1000 share of their tax payment in support of the Fondazione IRCCS Istituto Nazionale Tumori, according to Italian laws (INT-Institutional strategic projects "5 × 1000"). CONSTIT TEAM acknowledges Marco Pierotti, and Carla B. Ripamonti of the Fondazione IRCCS Istituto Nazionale dei Tumori, Milan, Italy; Bernardo Bonanni of the Istituto Europeo di Oncologia, Milan, Italy; Barbara Pasini of University of Turin, Turin, Italy; Laura Tizzoni and Loris Bernard of the Cogentech, Consortium for Genomic Technologies, Milan, Italy.

*ModSquad*

C.I.S. is supported by the Mayo Rochester Early Career Development Award for Non-Clinician Scientists. We acknowledge the contributions of Petr Pohlreich and Zdenek Kleibl (Department of Biochemistry and Experimental Oncology, First Faculty of Medicine, Charles University, Prague, Czech Republic) and the support of the Grant Agency of the Czech Republic, project No. GP301/08/P103 (to M.Z.). We acknowledge the contribution of Kim De Leeneer and Anne De Paepe. This research was supported by grant 1.5.150.07 from the Fund for Scientific Research Flanders (FWO) to Kathleen Claes and by grant 12051203 from the Ghent University to Anne De Paepe. Bruce Poppe is Senior Clinical Investigator of the Fund for Scientific Research of Flanders (FWO—Vlaanderen). Kim De Leeneer is supported by the Vlaamse Liga tegen Kanker through a grant of the Foundation Emmanuel van der Schueren. L.F., Machackova Eva, and Lukesova Miroslava's are supported through the Ministry of Health grant CR-MZO MOU 2005.

*National Cancer Institute (NCI)*

The research of P.L. Mai and M.H. Greene was supported by the Intramural Research Program of the US National Cancer Institute, and by support services contracts N02-CP-11019-50 and N02-CP-65504 with Westat, Inc, Rockville, MD. Genotyping of NCI DNA samples was performed by NCI's Core Genotyping Facility, Gaithersburg, MD.

*Ontario Cancer Genetics Network (OCGN)*

We wish to thank Mona Gill, Lucine Collins, Nalan Gokgoz, Teresa Selander, Nayana Weerasooriya, and members of the Ontario Cancer Genetics Network for their contributions to the study.

*Sheba Medical Center Study (SMC)*

The SMC study was supported in part by the Israel Cancer Association (ICA), SWE-BRCA

SWE-BRCA collaborators: Per Karlsson, Margareta Nordling, Annika Bergman, and Zakaria Einbeigi, Gothenburg, Sahlgrenska University Hospital; Sigrun Liedgren, Linköping University Hospital; Niklas Loman, Håkan Olsson, Ulf Kristofferson, Helena Jernström, Katja Harbst, and Karin Henriksson, Lund University Hospital; Brita Arver, Anna von Wachenfeldt, Annelie Liljegren, and Gisela Barbany-Bustinza, Stockholm, Karolinska University Hospital; Henrik Grönberg, Eva-Lena Stattin, and Monica Emanuelsson, Umeå University Hospital; Hans Ehrencrona, Richard Rosenquist Brandell, and Niklas Dahl, Uppsala University Hospital

*University of Pennsylvania (UPENN)*

Breast Cancer Research Foundation (to K.L.N.); Cancer Genetics Network (to S.M.D.), Marjorie Cohen Foundation (to S.M.D.).

*International Hereditary Cancer Center (IHCC)*

IHCC was supported by Grant PBZ\_KBN\_122/P05/2004.

*Spanish National Cancer Center (CNIO)*

We thank R.M. Alonso, G Pita, and R.M. Milne for their assistance. This study was partially supported by Fundación Mutua Madrileña, Asociación Española

Contra el Cáncer, and the Spanish Ministry of Science and Innovation (FIS P108 1120). Funded in part by the Basque Foundation for Health Innovation and Research (BIOEF): BIO07/CA/006.

*Deutsches Krebsforschungszentrum (DKFZ) study*

The DKFZ study was supported by the DKFZ.

*Epidemiological study of BRCA1 & BRCA2 mutation carriers (EMBRACE)*

Douglas F. Easton is the PI of the study. EMBRACE collaborators: North of Scotland Regional Genetics Service, Aberdeen: Helen Gregory, Zosia Miedzobrodzka. West Midlands Regional Clinical Genetics Service, Birmingham: Carole McKeown, Laura Boyes. South West Regional Genetics Service, Bristol: Alan Donaldson. Medical Genetics Services for Wales, Cardiff: Alexandra Murray, Mark Rogers, Emma McCann. St James's Hospital, Dublin & National Center for Medical Genetics, Dublin: David Barton. Peninsula Clinical Genetics Service, Exeter: Carole Brewer, Emma Kivuva, Anne Searle, Selina Goodman. West of Scotland Regional Genetics Service, Glasgow: Victoria Murday, Nicola Bradshaw, Lesley Snadden, Mark Longmuir, Catherine Watt, Sarah Gibson. South East Thames Regional Genetics Service, Guy's Hospital London: Louise Izatt, Chris Jacobs, Caroline Langman. Leicestershire Clinical Genetics Service, Leicester: Julian Barwell. Yorkshire Regional Genetics Service, Leeds: Carol Chu, Tim Bishop, Julie Miller. Merseyside & Cheshire Clinical Genetics Service, Liverpool: Ian Ellis. Manchester Regional Genetics Service, Manchester: Felicity Holt. North East Thames Regional Genetics Service, NE Thames: Alison Male, Lucy Side, Anne Robinson. Nottingham Center for Medical Genetics, Nottingham: Carol Gardiner. Northern Clinical Genetics Service, Newcastle: Fiona Douglas, Oonagh Claber. Oxford Regional Genetics Service, Oxford: Diane McLeod, Dorothy Halliday, Sarah Durrell, Barbara Stayner. The Institute of Cancer Research and Royal Marsden NHS Foundation Trust: Ros Eeles, Susan Shanley, Nazneen Rahman, Richard Houlston, Elizabeth Bancroft, Lucia D'Mello, Elizabeth Page, Audrey Arden-Jones, Kelly Kohut, Jennifer Wiggins, Elena Castro, Lisa Robertson. North Trent Clinical Genetics Service, Sheffield: Oliver Quarrell, Cathryn Bardsley. South West Thames Regional Genetics Service, London: Sheila Goff, Glen Brice, Lizzie Winchester. Wessex Clinical Genetics Service, Princess Anne Hospital, Southampton: Diana Eccles, Anneke Lucassen, Gillian Crawford, Emma Tyler, Donna McBride. D.F.E., S.P., M.C., D.F. and C.O. are funded by Cancer Research-UK Grants C1287/A10118 and C1287/A8874. D.C. is supported by Cancer Research-UK Grant C8197/A10123.

*The Hereditary Breast and Ovarian Cancer Research Group Netherlands (HEBON)*

HEBON Collaborating Centers: Coordinating center: Netherlands Cancer Institute, Amsterdam; Senno Verhoef, Martijn Verheus, Laura J. van 't Veer, Flora E. van Leeuwen; Erasmus Medical Center, Rotterdam: Margriet Collée, Ans M.W. van den Ouweland, Agnes Jager, Maartje J. Hooning, Madeleine M.A. Tilanus-Linthorst, Caroline Seynaeve; Leiden University Medical Center, Leiden: Juul T. Wijnen, Maaikje P. Vreeswijk, Rob A. Tollenaar; Radboud University Nijmegen Medical Center, Nijmegen: Marjolijn J. Ligtenberg; University Medical Center Utrecht, Utrecht: Margreet G. Ausems; Amsterdam Medical Center: Theo A. van Os; VU University Medical Center, Amsterdam: Johan J.P. Gille, Quinten Waisfisz; University Hospital Maastricht, Maastricht: Encarna B. Gomez-Garcia, Cees E. van Roozendaal; University Medical Center Groningen University: Jan C. Oosterwijk, Annemarie H van der Hout, Marian J. Mourits; The Netherlands Foundation for the detection of hereditary tumours, Leiden, the Netherlands: Hans F. Vasen. The HEBON study is supported by the Dutch Cancer Society grants NKI 1998-1854, NKI 2004-3088 and NKI 2007-3756.

*Fox Chase Cancer Center (FCCC)*

A.K.G. was funded by SPORE P-50CA83638, U01CA69631, 5U01CA113916, and the Eileen Stein Jacoby Fund.

*Breast Cancer Family Registry (BCFR)*

This work was supported by the National Cancer Institute, National Institutes of Health under RFA-CA-06-503 and through cooperative agreements with members of the Breast Cancer Family Registry and Principal Investigators, including Cancer Care Ontario (U01 CA69467), Columbia University (U01 CA69398), Fox Chase Cancer Center (U01 CA69631), Huntsman Cancer Institute (U01 CA69446), Northern California Cancer Center (U01 CA69417), University of Melbourne (U01 CA69638), and Research Triangle Institute Informatics Support Center (RFP No. N02PC45022-46). Samples from the FCCC, HCI, and NCCC were processed and distributed by the Coriell Institute for Medical Research. The content of this manuscript does not necessarily reflect the views or policies of the National Cancer Institute or any of the collaborating centers in the BCFR, nor does mention of trade names, commercial products, or organizations imply endorsement by the U.S. Government or the BCFR.

*Genetic Modifiers of cancer risk in BRCA1/2 mutation carriers (GEMO)*

The GEMO study is supported by the Ligue Nationale Contre le Cancer, Association for International Cancer Research Grant AICR-07-0454, and the Association "Le cancer du sein, parlons-en!" Award. We wish to thank all the GEMO collaborating groups for their contribution to this study. GEMO Collaborating Centers are: Coordinating Centres, Unité Mixte de Génétique Constitutionnelle des Cancers Fréquents, Centre Hospitalier Universitaire de Lyon/Centre Léon Bérard, and UMR5201 CNRS, Université de Lyon, Lyon: Laure Barjhoux, Sophie Giraud, Mélanie Léone, Sylvie; and INSERM U509, Service de



Génétique Oncologique, Institut Curie, Paris: Marion Gauthier-Villars, Claude Houdayer, Virginie Moncoutier, Muriel Belotti, Institut Gustave Roussy, Villejuif: Brigitte Bressac-de-Paillerets, Audrey Remenieras, Véronique Byrde, Olivier Caron, Gilbert Lenoir. Centre Jean Perrin, Clermont-Ferrand: Yves-Jean Bignon, Nancy Uhrhammer. Institut Paoli Calmettes, Marseille: Violaine Bourdon, François Eisinger. Groupe Hospitalier Pitié-Salpêtrière, Paris: Florence Coulet, Chrystelle Colas, Florent Soubrier. CHU de Arnaud-de-Villeneuve, Montpellier: Isabelle Coupier. Centre Oscar Lambret, Lille: Jean-Philippe Peyrat, Joëlle Fournier, Françoise Révillion, Philippe Vennin, Claude Adenis. Centre René Huguenin, St Cloud: Etienne Rouleau, Rosette Lidereau, Liliane Demange. Centre Paul Strauss, Strasbourg: Danièle Muller, Jean-Pierre Fricker. Institut Bergonié, Bordeaux: Michel Longy, Nicolas Sevenet. Institut Claudius Regaud, Toulouse: Christine Toulas, Rosine Guimbaud, Laurence Gladieff, Viviane Feille. CHU de Grenoble: Christine Rebischung. CHU de Dijon: Cécile Cassini. CHU de St-Etienne: Fabienne Prieur. Hôtel Dieu Centre Hospitalier, Chambéry: Sandra Fert Ferrer.

#### *Copenhagen Breast Cancer Study (CBCS)*

We wish to thank Bent Ejlersten, Mette K. Andersen, and Susanne Kjaergaard for clinical data. The work was supported by the Neye Foundation.

#### *Gynecologic Oncology Group (GOG)*

This study was supported by National Cancer Institute grants of the Gynecologic Oncology Group Administrative Office (CA 27469) and the Gynecologic Oncology Group Statistical and Data Center (CA 37517). GOG's participation was supported through funding provided by both intramural (Clinical Genetics Branch, DCEG) and extramural (Community Oncology and Prevention Trials Program—COPTRG) NCI programs. Genotyping of GOG DNA samples was performed by NCI's Core Genotyping Facility.

The technical expertise of Tim Sheehy and Amy Hutchinson is gratefully acknowledged.

#### *Ohio State University Clinical Cancer Genetics (OSU CCG)*

This work was funded by the OSU Comprehensive Cancer Center. We thank Kevin Sweet and Caroline Craven for patient accrual and data management, the Human Genetics Sample Bank for sample preparation, and the OSU Nucleic Acids Shared Resource for plate reads.

#### *Istituto Oncologico Veneto—Hereditary Breast Ovarian Cancer Study (IOVHBOCS)*

The study was supported by the Ministero dell'Università e della Ricerca, Ministero della Salute, and Alleanza Contro il Cancro.

#### *N.N. Petrov Institute of Oncology (NNPIO)*

The work is supported by the Russian Foundation for Basic Research (grants 08-04-00369-a, 09-04-90402, and 10-04-92110-a), the Commission of the European Communities (grant PITN-GA-2009-238132), and through a Royal Society International Joint grant (JP090615).

#### *Baltic Familial Breast Ovarian Cancer Consortium (BFBOCC)*

We acknowledge the Genome Database of Latvian Population, Latvian Biomedical Research and Study Centre for providing data and DNA samples for BFBOCC (L.V.), and Ramunas Janavicius (Vilnius University Hospital Santariskiu Clinics, Lithuania) for data and DNA samples for BFBOCC (L.T.).

#### *UK and Gilda Radner Familial Ovarian Cancer Registries (UKGRFOCR)*

UKFOCR was supported by a project grant from CRUK to Paul Pharoah. We thank Carole Pye and Patricia Harrington for family recruitment and technical support. We would like to acknowledge the Roswell Park Alliance Foundation for their continued support of the Gilda Radner Ovarian Family Cancer Registry. GRFOCR would like to acknowledge Kirsten Moysich (Department of Cancer Prevention and Control) and Kunle Odunsi (Departments Gynecologic Oncology and Immunology).

#### *Women's Cancer Research Institute (WCRI)*

This work was supported by the American Cancer Society Early Detection Partnership and Entertainment Industry Foundation.

#### *The German Consortium of Hereditary Breast and Ovarian Cancer (GC-HBOC)*

GC-HBOC is supported by a grant of the German Cancer Aid (grant 107054). We thank Juliane Köhler for her excellent technical assistance, Ellen Kirsch, Isabell Eisenhauer, Hans-Jörg Plendl, Thomas Neumann, Ulrike Siebers-Rehnel, Doris Steinemann, Britta Skawran, Patricia Steiner, and the 12 centers of the GC-HBOC for providing samples and clinical data.

#### *Helsinki Breast Cancer Study (HEBCS)*

HEBCS thanks Tuomas Heikkinen and Dr. Carl Blomqvist for their help with the patient data and samples. The HEBCS study has been financially supported by the Helsinki University Central Hospital Research Fund, Academy of Finland (132473), the Finnish Cancer Society, and the Sigrid Juselius Foundation.

#### *Hospital Clinico San Carlos (HCSC)*

Trinidad Caldes and Miguel de la Hoya were supported by FIS 09/00859 and RD06/0020/0021 (RTICC; ISCIII) Spanish Ministry of Science and Innovation.

#### *Interdisciplinary Health Research International Team Breast Cancer Susceptibility (INHERIT BRCA)*

INHERIT collaborators: Francine Durocher, Rachel Laframboise, Marie Plante, Centre Hospitalier Universitaire de Québec & Laval University, Québec, Canada; Peter Bridge, Molecular Diagnostic Laboratory, Alberta Children's Hospital, Calgary, Canada; Jocelyne Chiquette, Hôpital du Saint-Sacrement, Québec, Canada; Bernard Lesperance, Hôpital du Sacré-Cœur de Montréal, Montréal, Canada. Jacques Simard- J.S. is Chairholder of the Canada Research Chair in Oncogenetics. This work was supported by the Canadian Institutes of Health Research for the "CIHR Team in Familial Risks of Breast Cancer" program and by the Canadian Breast Cancer Research Alliance-grant #019511.

#### *Kathleen Cunningham Consortium for Research into Familial Breast Cancer (KCONFAB)*

We wish to thank Heather Thorne, Eveline Niedermayr, all the kConFab research nurses and staff, the heads and staff of the Family Cancer Clinics, and the Clinical Follow Up Study (funded by NHMRC grants 145684, 288704, and 454508) for their contributions to this resource, and the many families who contribute to kConFab. kConFab is supported by grants from the National Breast Cancer Foundation, the National Health and Medical Research Council (NHMRC), and by the Queensland Cancer Fund, the Cancer Councils of New South Wales, Victoria, Tasmania, and South Australia, and the Cancer Foundation of Western Australia. Amanda Spurle is supported by an NHMRC Senior Research Fellowship, and Georgia Chenevix-Trench by an NHMRC Senior Principal Research Fellowship.

## Grant Support

The Consortium of Investigators of Modifiers of BRCA1/2 is supported by grants from Cancer Research UK. All study-specific grants are listed in the acknowledgments section.

Received 06/06/2010; revised 07/30/2010; accepted 08/23/2010; published OnlineFirst 11/30/2010.

## References

- Antoniou A, Pharoah PD, Narod S, Risch HA, Eyfjord JE, Hopper JL, et al. Average risks of breast and ovarian cancer associated with BRCA1 or BRCA2 mutations detected in case Series unselected for family history: a combined analysis of 22 studies. *Am J Hum Genet* 2003;72:1117-30.
- Begg CB, Haile RW, Borg A, Malone KE, Concannon P, Thomas DC, et al. Variation of breast cancer risk among BRCA1/2 carriers. *JAMA* 2008;299:194-201.
- Simchoni S, Friedman E, Kaufman B, Gershoni-Baruch R, Orr-Urtreger A, Kedar-Barnes, et al. Familial clustering of site-specific cancer risks associated with BRCA1 and BRCA2 mutations in the Ashkenazi Jewish population. *Proc Natl Acad Sci U S A* 2006;103:3770-4.
- Antoniou AC, Cunningham AP, Peto J, Evans DG, Lalloo F, Narod SA, et al. The BOADICEA model of genetic susceptibility to breast and ovarian cancers: updates and extensions. *Br J Cancer* 2008; 98:1457-66.
- Chenevix-Trench G, Milne RL, Antoniou AC, Couch FJ, Easton DF, Goldgar DE. An international initiative to identify genetic modifiers of cancer risk in BRCA1 and BRCA2 mutation carriers: the Consortium of Investigators of Modifiers of BRCA1 and BRCA2 (CIMBA). *Breast Cancer Res* 2007;9:104.
- Antoniou AC, Spurdle AB, Sinilnikova OM, Healey S, Pooley KA, Schmutzler RK, et al. Common breast cancer-predisposition alleles are associated with breast cancer risk in BRCA1 and BRCA2 mutation carriers. *Am J Hum Genet* 2008;82:937-48.
- Antoniou AC, Sinilnikova OM, McGuffog L, Healey S, Nevanlinna H, Heikkinen T, et al. Common variants in LSP1, 2q35 and 8q24 and breast cancer risk for BRCA1 and BRCA2 mutation carriers. *Hum Mol Genet* 2009;18:4442-56.
- Easton DF, Pooley KA, Dunning AM, Pharoah PD, Thompson D, Ballinger DG, et al. Genome-wide association study identifies novel breast cancer susceptibility loci. *Nature* 2007;447:1087-93.



9. Hunter DJ, Kraft P, Jacobs KB, Cox DG, Yeager M, Hankinson SE, et al. A genome-wide association study identifies alleles in FGFR2 associated with risk of sporadic postmenopausal breast cancer. *Nat Genet* 2007;39:870–4.
10. Ahmed S, Thomas G, Ghoussaini M, Healey CS, Humphreys MK, Platte R, et al. Newly discovered breast cancer susceptibility loci on 3p24 and 17q23.2. *Nat Genet* 2009;41:585–90.
11. Stacey SN, Manolescu A, Sulem P, Thorlacius S, Gudjonsson SA, Jonsson GF, et al. Common variants on chromosome 5p12 confer susceptibility to estrogen receptor-positive breast cancer. *Nat Genet* 2008;40:703–6.
12. Thomas G, Jacobs KB, Kraft P, Yeager M, Wacholder S, Cox DG, et al. A multistage genome-wide association study in breast cancer identifies two new risk alleles at 1p11.2 and 14q24.1 (RAD51L1). *Nat Genet* 2009;41:579–84.
13. Turnbull C, Ahmed S, Morrison J, Pernet D, Renwick A, Maranian M, et al. Genome-wide association study identifies five new breast cancer susceptibility loci. *Nat Genet* 2010;42:504–7.
14. Zheng W, Long J, Gao YT, Li C, Zheng Y, Xiang YB, et al. Genome-wide association study identifies a new breast cancer susceptibility locus at 6q25.1. *Nat Genet* 2009;41:324–8.
15. Antoniou AC, Sinilnikova OM, Simard J, Léoné M, Dumont M, Neuhausen SL, et al. RAD51 135G→C modifies breast cancer risk among BRCA2 mutation carriers: results from a combined analysis of 19 studies. *Am J Hum Genet* 2007;81:1186–200.
16. Antoniou AC, Goldgar DE, Andrieu N, Chang-Claude J, Brohet R, Rookus MA, et al. A weighted cohort approach for analysing factors modifying disease risks in carriers of high-risk susceptibility genes. *Genet Epidemiol* 2005;29:1–11.
17. Lange K, Weeks D, Boehnke M. Programs for pedigree analysis: MENDEL, FISHER, and dGENE. *Genet Epidemiol* 1988;5:471–2.
18. Huber PJ. The behavior of maximum likelihood estimates under non-standard conditions. *Proceedings of the Fifth Berkley Symposium in Mathematical Statistics and Probability* 1967;1:221–33.
19. Antoniou AC, Easton DF. Polygenic inheritance of breast cancer: Implications for design of association studies. *Genet Epidemiol* 2003;25:190–202.
20. Risch N. Linkage strategies for genetically complex traits. I. Multilocus models. *Am J Hum Genet* 1990;46:222–8.
21. Zöllner S, Pritchard JK. Overcoming the winner's curse: estimating penetrance parameters from case-control data. *Am J Hum Genet* 2007;80:605–15.
22. Song H, Ramus SJ, Tyrer J, Bolton KL, Gentry-Maharaj A, Wozniak E, et al. A genome-wide association study identifies a new ovarian cancer susceptibility locus on 9p22.2. *Nat Genet* 2009;41:996–1000.
23. Song H, Ramus SJ, Kjaer SK, DiCioccio RA, Chenevix-Trench G, Pearce CL, et al. Association between invasive ovarian cancer susceptibility and 11 best candidate SNPs from breast cancer genome-wide association study. *Hum Mol Genet* 2009;18:2297–304.
24. Garcia-Closas M, Hall P, Nevanlinna H, Pooley K, Morrison J, Richesson DA, et al. Heterogeneity of breast cancer associations with five susceptibility Loci by clinical and pathological characteristics. *PLoS Genet* 2008;4:e1000054.
25. Lakhani SR, Reis-Filho JS, Fulford L, Penault-Llorca F, van der Vijver M, Parry S, et al. Prediction of BRCA1 status in patients with breast cancer using estrogen receptor and basal phenotype. *Clin Cancer Res* 2005;11:5175–80.
26. Eccles DM. Identification of personal risk of breast cancer: genetics. *Breast Cancer Res* 2008;10(Suppl 4):S12.

# Cancer Research

The Journal of Cancer Research (1916–1930) | The American Journal of Cancer (1931–1940)

## Common Breast Cancer Susceptibility Alleles and the Risk of Breast Cancer for *BRCA1* and *BRCA2* Mutation Carriers: Implications for Risk Prediction

Antonis C. Antoniou, Jonathan Beesley, Lesley McGuffog, et al.

*Cancer Res* 2010;70:9742-9754. Published OnlineFirst November 30, 2010.

<b>Updated version</b>	Access the most recent version of this article at: doi: <a href="https://doi.org/10.1158/0008-5472.CAN-10-1907">10.1158/0008-5472.CAN-10-1907</a>
<b>Supplementary Material</b>	Access the most recent supplemental material at: <a href="http://cancerres.aacrjournals.org/content/suppl/2010/11/30/0008-5472.CAN-10-1907.DC1">http://cancerres.aacrjournals.org/content/suppl/2010/11/30/0008-5472.CAN-10-1907.DC1</a>

<b>Cited articles</b>	This article cites 25 articles, 2 of which you can access for free at: <a href="http://cancerres.aacrjournals.org/content/70/23/9742.full#ref-list-1">http://cancerres.aacrjournals.org/content/70/23/9742.full#ref-list-1</a>
<b>Citing articles</b>	This article has been cited by 19 HighWire-hosted articles. Access the articles at: <a href="http://cancerres.aacrjournals.org/content/70/23/9742.full#related-urls">http://cancerres.aacrjournals.org/content/70/23/9742.full#related-urls</a>

<b>E-mail alerts</b>	<a href="#">Sign up to receive free email-alerts</a> related to this article or journal.
<b>Reprints and Subscriptions</b>	To order reprints of this article or to subscribe to the journal, contact the AACR Publications Department at <a href="mailto:pubs@aacr.org">pubs@aacr.org</a> .
<b>Permissions</b>	To request permission to re-use all or part of this article, use this link <a href="http://cancerres.aacrjournals.org/content/70/23/9742">http://cancerres.aacrjournals.org/content/70/23/9742</a> . Click on "Request Permissions" which will take you to the Copyright Clearance Center's (CCC) Rightslink site.