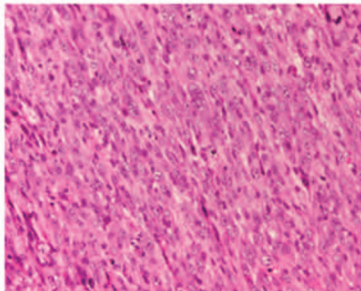
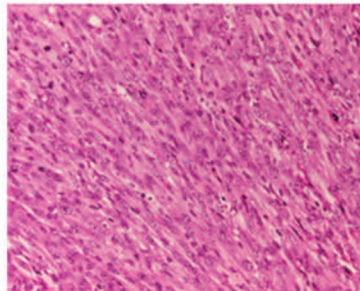
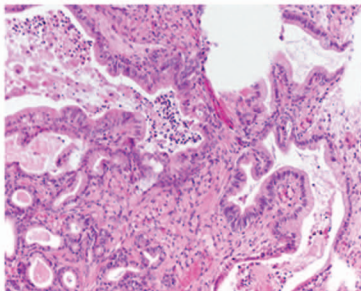
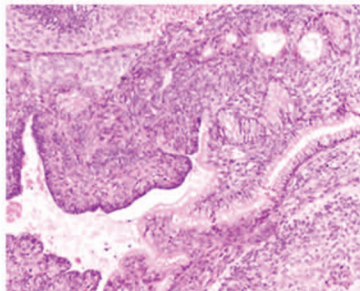
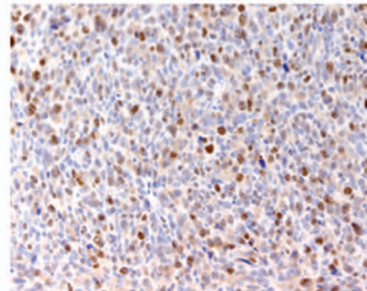
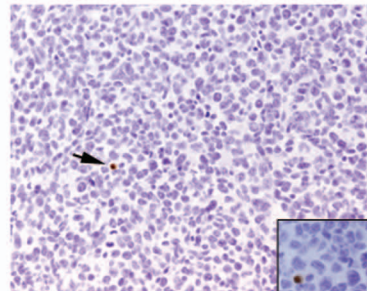


ASTO^{EMPTY}STO^{EWS-FLI1}ES^{EMPTY}ES^{EWS-FLI1}**B**MPC^{EWS-FLI1T1}

Ki 67

MPC^{EWS-FLI1T1}

Tunel

Supplemental Data 3 : Histology of ES and STO cell-derived tumors, and the proliferative and apoptotic index of MPC^{EWS-FLI-1} tumors.

(A): Expression of EWS-FLI-1 in ES and STO cells did not alter the morphology of the corresponding tumors derived from empty vector infected counterparts. H-E staining. Magnification: 200X (Upper panels), 100X (Lower panels).

(B): MPC^{EWS-FLI-1T1} tumors display the expected high proliferative-low apoptotic status, as assessed by anti-Ki67 and anti-TdT (Tunel) antibody staining. Magnification: 200X, (inset: 400X)