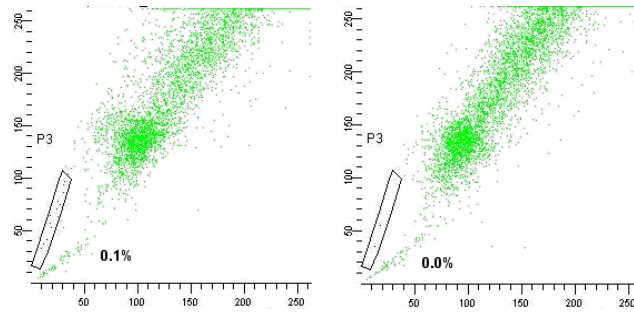


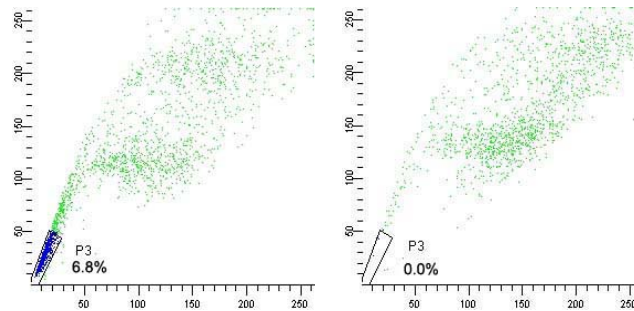
Supplements and Legends

Supplement 1: The other four human NPC cell lines, C-666-1, SUNE-1, HONE-1, and CNE-1 also contained a small subpopulation of SP cells and their proportions were 0.1%, 6.8%, 1.8%, and 0.7% respectively (as shown in the left line). After pretreated with verapamil for about 30 minutes, the percentage decreased to 0.0%, 0.0%, 0.7% and 0.0% respectively (as shown in the right line).

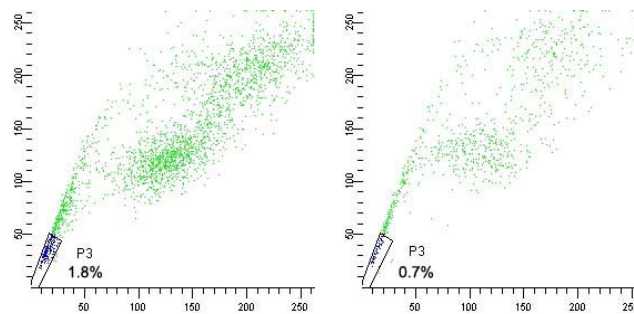
A: C666-1



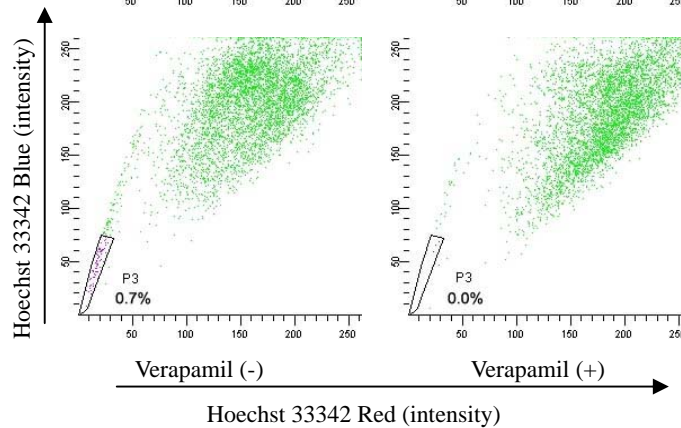
B: SUNE-1



C: HONE-1



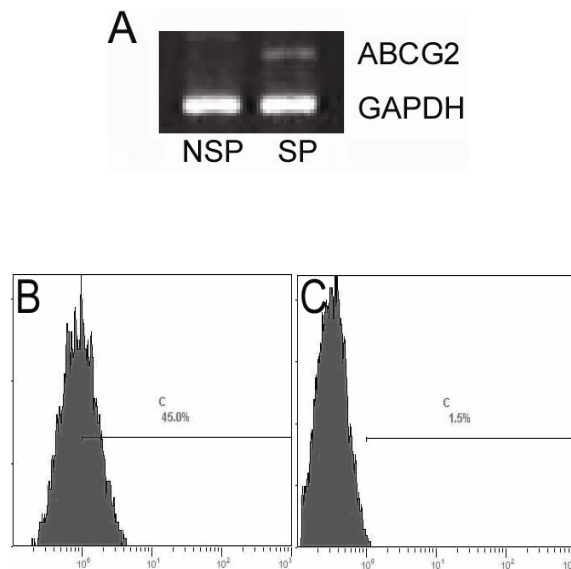
D: CNE-1



Supplement 2: ABCG2 gene expression in SP and NSP cells

A: RT-PCR electrophoresis results: lane 1 and 2 represents the products of NSP and SP cells, respectively. The upper row represents ABCG2, and the lower rows represent the internal GAPDH controls.

B, C: after cultured 18 days, ABCG2 protein expression on 45.0% and 1.5% of SP and NSP cells, respectively.



Supplement 3: drug sensitivity of SP and NSP cells to DDP and Mito-C

A and B: the freshly sorted SP cells were resistant to DDP ($P=0.003$) and Mito-C ($P=0.04$) than NSP cells.

