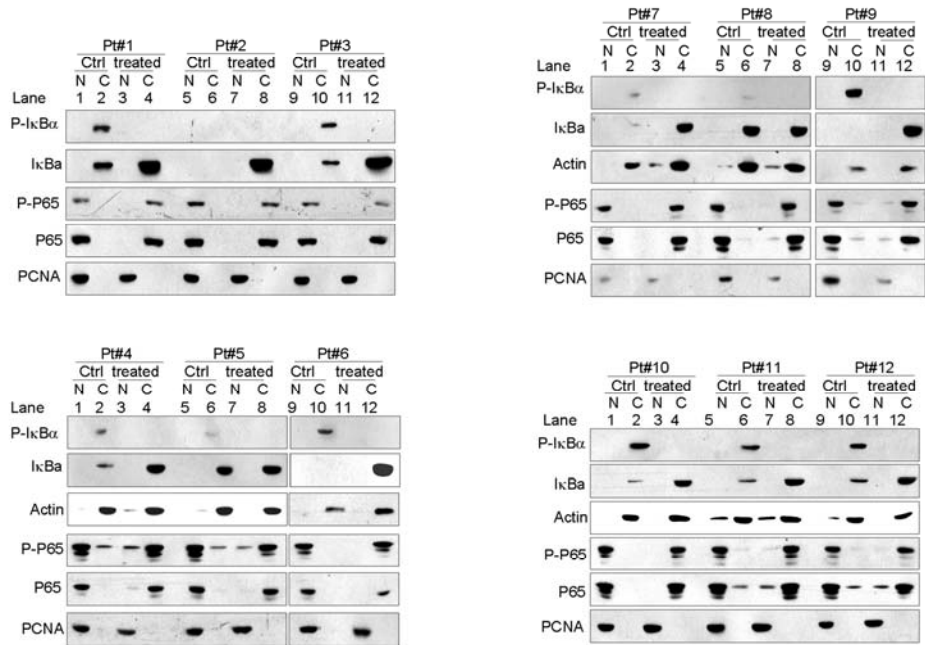


## Supplementary Figure S1



**Supplementary Figure S1.** Blast cells from an additional 12 AML patients were pretreated with 500 nM niclosamide for 24 hours, then exposed to 30 minutes' stimulation with TNF $\alpha$  (0.1 nM); nuclear and cytoplasmic extracts were then examined on Western blot analysis with specific antibodies. PCNA and actin served as markers of nuclear and cytoplasmic extractions, respectively.