

Supplemental Figure Legends

Supplemental Figure 1. Representative gating strategies for two separate human tumor samples. (A) Analysis was restricted to viable cells using first FSC v SSC profiles and then gated on propidium iodine negative cells. (B) Representative ALDH⁺ gating based on DEAB controls. (C) Histograms for representative stains (color) compared to isotype controls (black).

Supplemental Figure 2. Increased angiogenic capacity of CD133 expressing ovarian cancer cells. CD31 IHC from tumors from tumors derived from the indicated ALDH^{+/-}CD133^{+/-} A2780 cell populations. Scale bars indicate 100 micrometers.

Supplemental Figure 3. ALDH⁺CD133⁺ cells have increased tumor sphere forming potential. (A) Quantification of tumor sphere forming potential spheres formed from replicates of increasing numbers of the indicated cell populations from Pt55. (B) Tumor sphere forming potential of the indicated ALDH^{+/-}CD133^{+/-} cell populations and cell numbers from 8 individual patient's tumors.

Supplemental Table 1. Monoclonal Antibodies Used

Anti-Human Antibody	Conjugation	Source	Clone
Anti-Human CD133	APC	Miltenyi Biotec	293C3
Anti-Human CD90	APC or PE	R&D	Thy-1A1
Anti-Human CD24	APC or PE	BD	ML5
Anti-Human CD117	PE	STEMCELL Technologies	104D2
Anti-Human CD44	PE	BD	G44-26
Anti-Mouse CD31	Biotin	BD	MEC 13.3
Anti-Mouse CD105	Biotin	BD Pharmingen	MJ7/18
Anti-Human ALDH1	none	BD Research	611195
Anti-Human CD133	none	Abcam	polyclonal
goat anti-rabbit IgG	AF488	Molecular probes	polyclonal
goat anti-mouse IgG	AF648	Molecular probes	polyclonal

Supplemental Table 2. Percent of total cells in the indicated cell line expressing both ALDH and the indicated cell surface markers. Percent of total cells in the indicated cell lines expressing both ALDH and the indicated cell surface markers.

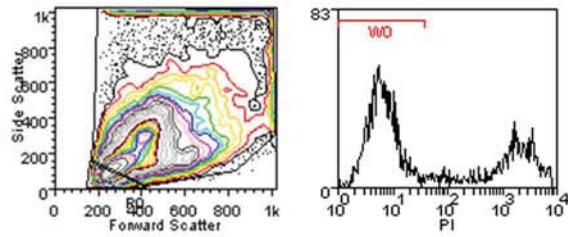
	A2008	A2780	HEY1	OVCAR3	OVCAR8	SKOV3
CD117	0	0	0	0	0.004	0
CD133	0	1.01	0	0	0.034	0
CD24	0.01	0	0	0	0.002	0
CD90	0	0	0	0	0.002	0
CD44	0.02	0	1.95	4.86	0.001	0.21

Supplemental Table 3. Co-expression of ALDEFLUOR and CSC markers in ovarian tumor cells isolated from patients. Percent of total cells in the indicated patient ovarian tumor specimens expressing both ALDH and the indicated cell surface markers.

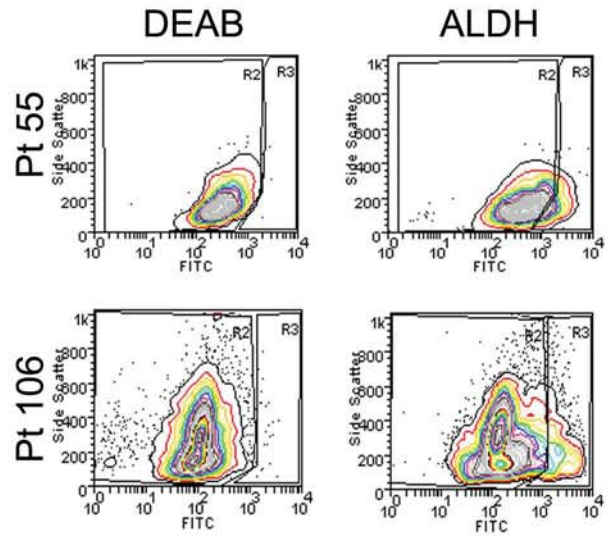
	Pt 106	Pt111	Pt 112	Pt 118	Pt 122
CD117	0.09	0.22	0	0	0.004
CD133	0.10	0.16	0	0	0.12
CD24	0.15	0.32	0.001	0.034	0.025
CD90	0.112	0	0.001	0	0.014
CD44	0.73	1.51	0.014	0.119	0.04

Supplemental Figure 1

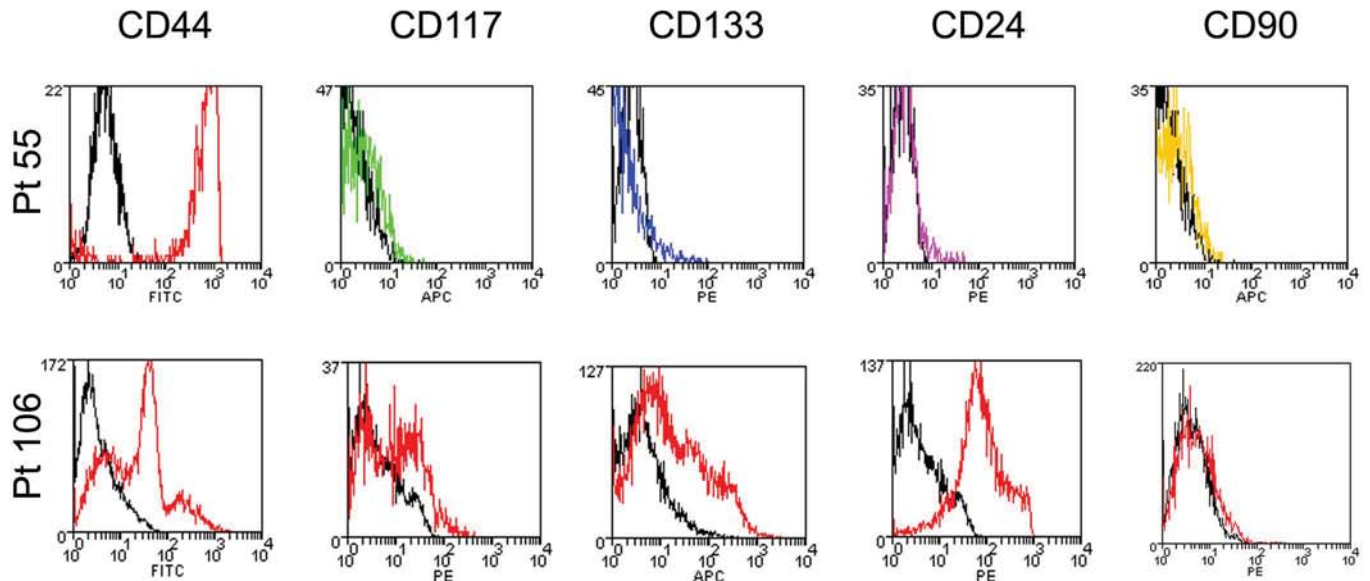
A



B



C



Supplemental Figure 2

