

**Supplementary Material for Li *et al.***

Supplementary Materials and Methods

Supplementary References

Supplementary Figures 1-7

Supplementary Table 1

## Supplementary Material and Methods

**Cell Culture and Treatment.** For androgen response experiments, cells were cultured in RPMI 1640 + 10% steroid-depleted, charcoal stripped serum (CSS) for 48h, treated at t=0 with combinations of 1nM DHT (Sigma), 10 $\mu$ M bicalutamide (Astra Zeneca), 1 $\mu$ M enzalutamide/MDV3100 (a kind gift from Dr. Michael Jung, UCLA), or vehicle control (EtOH), and then harvested at indicated time points. For long-term culture experiments, CWR-R1 cells were cultured in RPMI 1640 + 10% CSS. Cells were trypsinized and re-seeded in the appropriate medium when flasks attained 80% confluence. For single cell cloning experiments, cells were seeded at limiting dilution in 96-well plates and wells with single cell clones were expanded.

**Quantitative RT-PCR.** Primers and sequences used for mRNA expression analysis via RT-PCR are as follows: CDCA5 (5'-CGTAAGAAGAAGAAAATGCCAGA and 5'-TCAAACCTCGGCATTCATGG), ZWINT (5'-GTGGGAAGGCAGCTGAAC and 5'-CACCTCAGCCAGGACCTC), CCNA2 (5'-GGTACTGAAGTCCGGGAACC and 5'-GAAGATCCTTAAGGGGTGCAA), and UBE2C (5'-TGGTCTGCCCTGTATGATGT and 5'-AAAAGCTGTGGGGTTTTTCC). Akt mRNA expression levels were assessed using 5'-TCTATGGCGCTGAGATTGTG and 5'-CTTAATGTGCCCGTCCTTGT.

**Multiplex Ligation-Dependent Probe Assay.** Multiplex ligation-dependent probe assay with custom-designed probes for the AR locus has been described (12). The percentage of deletion-positive CWR-R1 cells was inferred by dividing copy number derived from AR locus probes targeted within the deletion by copy number derived from AR locus probes targeted outside of the deletion, and subtracting from 100%.

**Statistical Analysis.** Two-tailed paired t-tests were used to assess statistical significances in promoter-reporter assays quantitative RT-PCR experiments, and cell growth experiments.

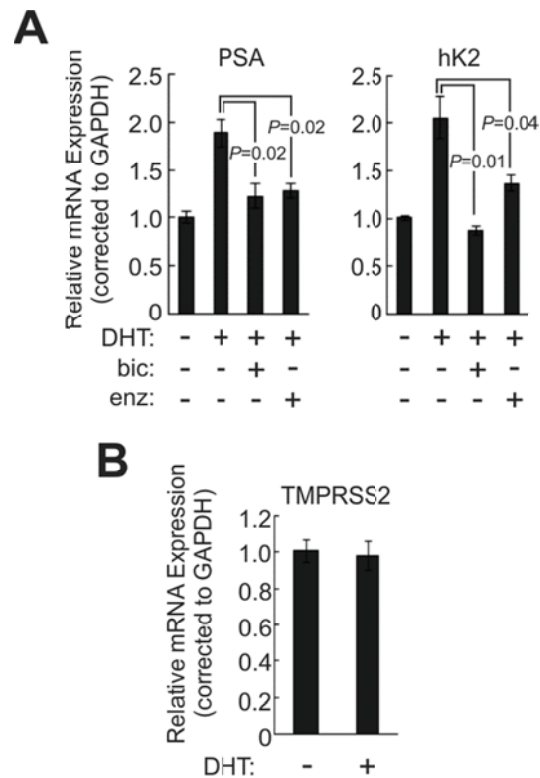
**Gene Expression Analysis with Illumina Beadchips.** RNA was isolated (1), further purified using Qiagen RNeasy columns as per the manufacturer's protocol, and 2  $\mu$ g was submitted to the University of Minnesota's BioMedical Genomics Center for Illumina Direct Hybridization array analysis (Illumina, San Diego, CA). RNA quality control was performed using a NanoDrop 8000 spectrophotometer (Thermo Fisher Scientific, Waltham, MA) and Caliper LabChip GX (Caliper Life Sciences, Hopkinton, MA). Total RNA was converted to amplified biotinylated, antisense cRNA using the Illumina TotalPrep-96 RNA Amplification Kit (Life Technologies, Carlsbad, CA), and 150ng of biotin-labeled cRNA was hybridized onto Illumina HumanHT-12 v4 Expression Beadchips (Illumina, San Diego, CA) using the HumanHT-12 v4 Expression BeadChip Kit (Illumina, San Diego, CA). Hybridized Beadchips were scanned with an Illumina iScan. Raw intensity data was extracted from iScan scan image files (Illumina) using GenomeStudio software (Illumina),  $\log_2$  transformed, and then imported to Partek Genomics Suite 6.6 (Partek Inc., St. Louis, MO). Using Partek GS, raw intensity data was quantile normalized and differential gene expression was determined by one-way analysis of variance (ANOVA) using default settings within the Gene Expression Workflow. Genes demonstrating at least 1.2-fold change in response to treatment (siAR-Exon 7 vs. siAR-Exon 1 or siAR-Exon CE3 vs. siAR-Exon CE3 + 1nM DHT) with a *P*-value less than 0.05 were deemed differentially expressed. Heat maps were generated by unsupervised hierarchical clustering of differentially-expressed genes. Rows were scaled to mean zero and standard deviation equal to one.

**Gene Set Enrichment Analysis (GSEA).** Gene sets that have been shown to discriminate between AR-V-driven transcription and androgen/AR-driven transcription have been described (2). These gene sets were tested for enrichment in gene expression data from CWR-R1 cells using GSEA v2.07 (Broad Institute, (3)). Normalized gene expression data was ranked using the Signal2Noise metric and GSEA was performed against 1000 random gene set permutations. Using the same approach, these gene sets were tested for enrichment in gene expression data from biological triplicates of LNCaP cells cultured 18h in 1nM DHT vs. ethanol vehicle control (NCBI gene expression omnibus GEO dataset GSE26483) and gene expression data from biological triplicates of LNCaP cells cultured 16h in 100nM DHT vs. ethanol vehicle control (GSE7868).

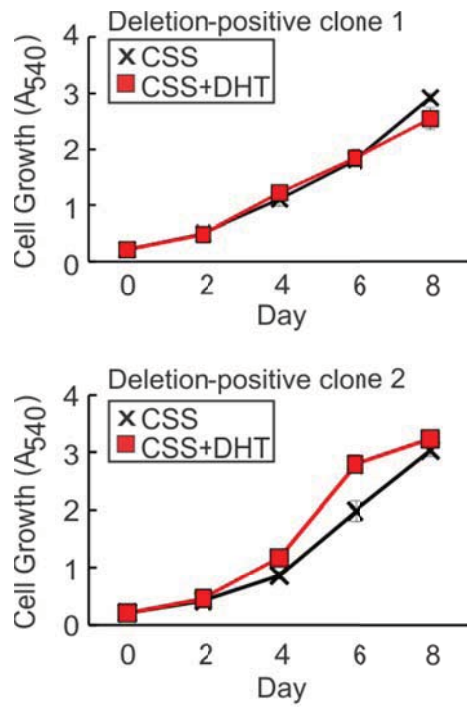
**Ingenuity Pathways Analysis.** Differentially-expressed gene lists (Supplementary Table 1) from siAR-Exon 7 vs. siAR-Exon 1 or siAR-Exon CE3 vs. siAR-Exon CE3 + 1nM DHT datasets were used as input for network analysis using Ingenuity Systems Pathways Analysis (Ingenuity Systems, Redwood CA), a commercial application that infers the relationship between the gene set and known pathways. Default settings were used where “Ingenuity Knowledge Base (Genes Only)” was the reference set, and both direct and indirect relationships were considered to identify sub-networks enriched with the selected genes.

## Supplementary References

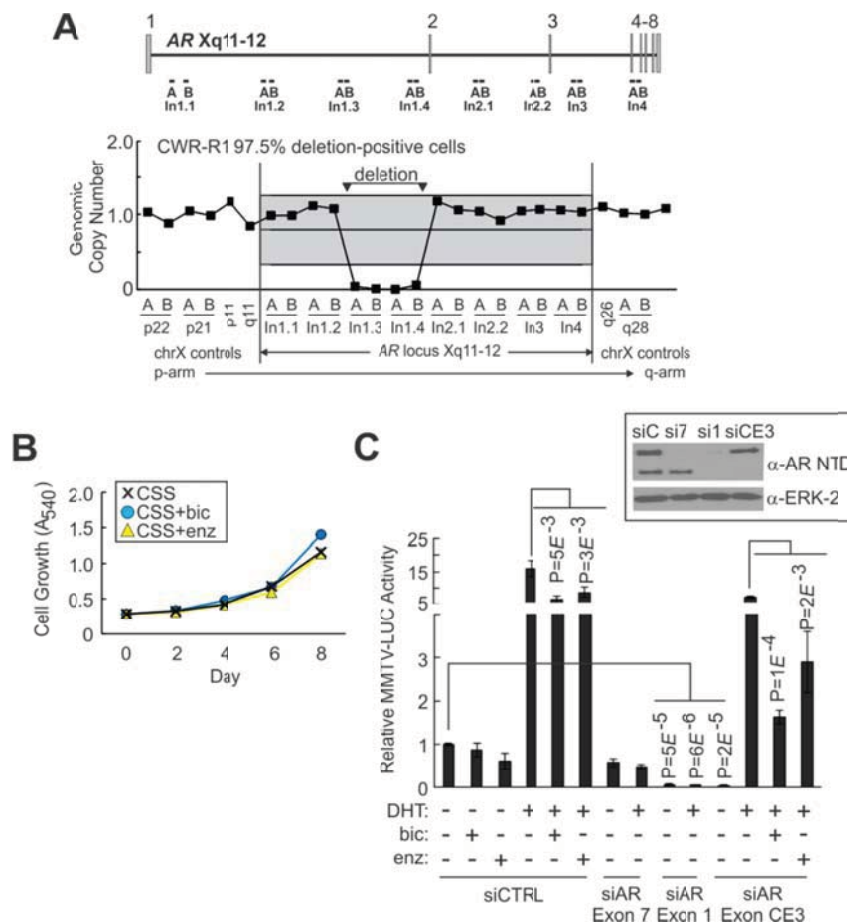
1. Chomczynski P, Sacchi N. Single-step method of RNA isolation by acid guanidinium thiocyanate- phenol-chloroform extraction. *Anal Biochem.* 1987;162(1):156-9.
2. Hu R, Lu C, Mostaghel EA, Yegnasubramanian S, Gurel M, Tannahill C, et al. Distinct transcriptional programs mediated by the ligand-dependent full-length androgen receptor and its splice variants in castration-resistant prostate cancer. *Cancer Res.* 2012;72(14):3457-62. Epub 2012/06/20.
3. Subramanian A, Tamayo P, Mootha VK, Mukherjee S, Ebert BL, Gillette MA, et al. Gene set enrichment analysis: a knowledge-based approach for interpreting genome-wide expression profiles. *Proc Natl Acad Sci U S A.* 2005;102(43):15545-50. Epub 2005/10/04.



**Supplementary Figure. 1.** Antiandrogens achieve on-target inhibition of full-length AR in 22Rv1 cells. (A) 22Rv1 cells were treated under serum-free conditions with 1nM DHT, 10 $\mu$ M bicalutamide, or 1 $\mu$ M enzalutamide as indicated. Quantitative RT-PCR was performed to assess mRNA expression of PSA and hK2. Data represent mean  $\pm$  S.D. from 3 biological replicate experiments, each performed in duplicate. (B) mRNA expression of TMPRSS2 in response to 1nM DHT treatment was assessed as in (A).

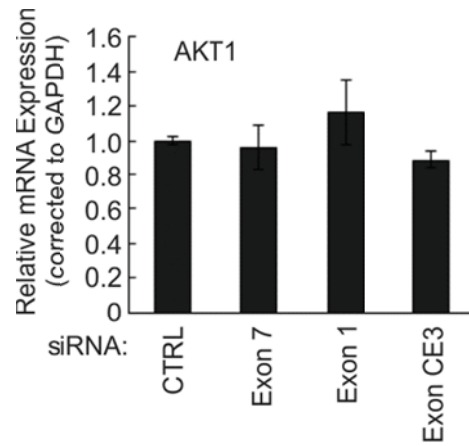


**Supplementary Figure 2.** CWR-R1 cells harboring a 48kb intragenic deletion in AR intron 1 display androgen-independent growth. Cell growth in response to 1nM DHT was assessed under castrate conditions (CSS) via crystal violet staining at indicated time-points.

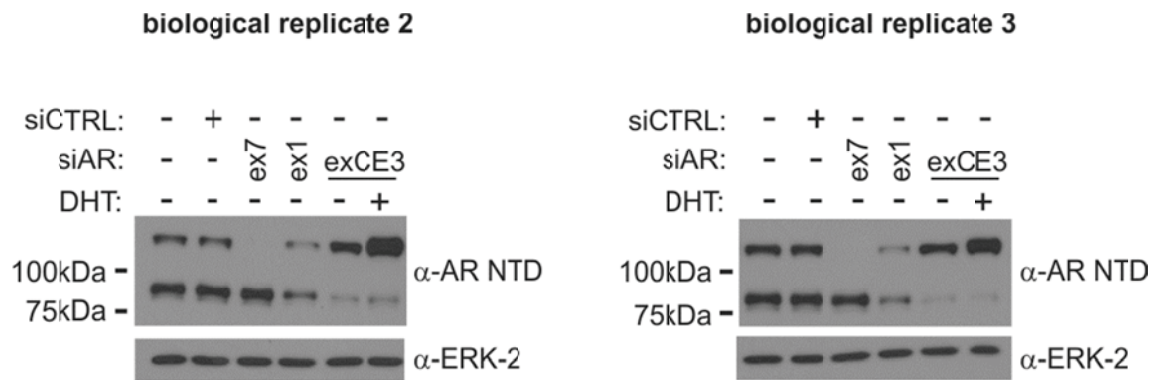


**Supplementary Figure 3.** Deletion-enriched CWR-R1 cells are resistant to full-length AR targeting. (A) Multiplex ligation-dependent probe assay with AR-locus specific probes. Binding sites for discrete probes is indicated along the AR gene schematic. Grey boxes represent mean $\pm$  S.D. of all AR locus probes. Probes displaying local loss of signal, indicating genomic deletion, are indicated. (B) Growth of deletion-enriched CWR-R1 cells following treatment with 10 $\mu$ M bicalutamide or 1 $\mu$ M enzalutamide under castrate conditions. (C) Deletion-enriched CWR-R1 cells were transfected with a MMTV-luciferase promoter reporter construct along with indicated siRNAs and treated with combinations of 1nM DHT, 10 $\mu$ M bicalutamide, or 1 $\mu$ M enzalutamide as indicated. Data represent the mean  $\pm$  S.D. from at least three independent experiments, each performed in duplicate. Inset: lysates from transfected cells were subjected to Western blot analysis using antibodies targeted to the AR NTD or an internal control (ERK-2). Locations of full-length AR and truncated AR-Vs are indicated.



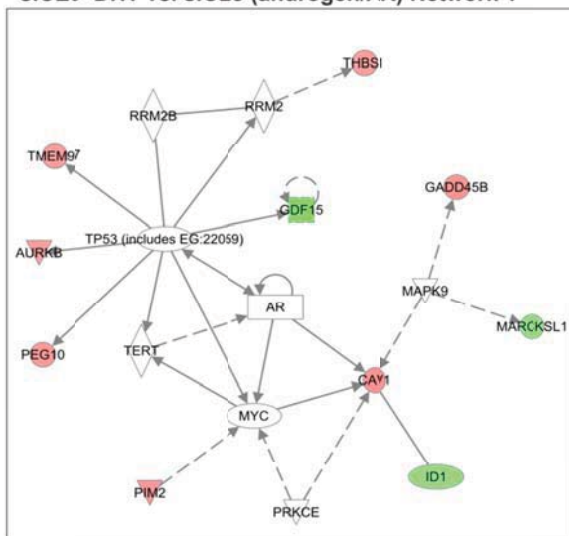


**Supplementary Figure 4.** AKT1 is not an AR-V target in deletion-enriched CWR-R1 cells. CWR-R1 cells were transfected with indicated siRNAs and maintained under serum-free conditions. Quantitative RT-PCR was performed to assess mRNA expression of AKT1. Data represent mean  $\pm$  S.D. from a triplicate experiment representative of 2 biological replicates.

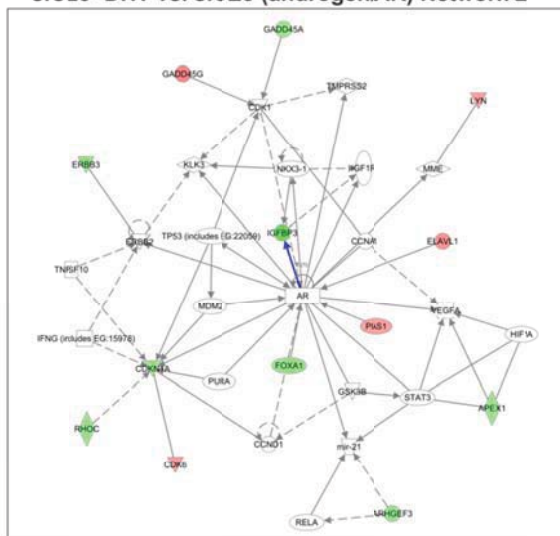


**Supplementary Figure 5.** Western blots from biological replicates of cells transfected with siRNAs and treated with 1nM DHT, which were subjected to RNA isolation and microarray analysis with Illumina Beadchips. Biological replicate 1 is illustrated in Fig. 3A.

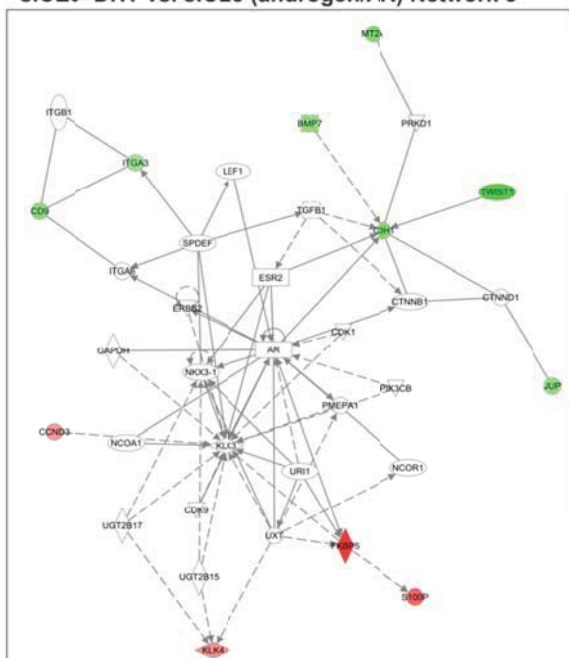
siCE3+DHT vs. siCE3 (androgen/AR) Network 1



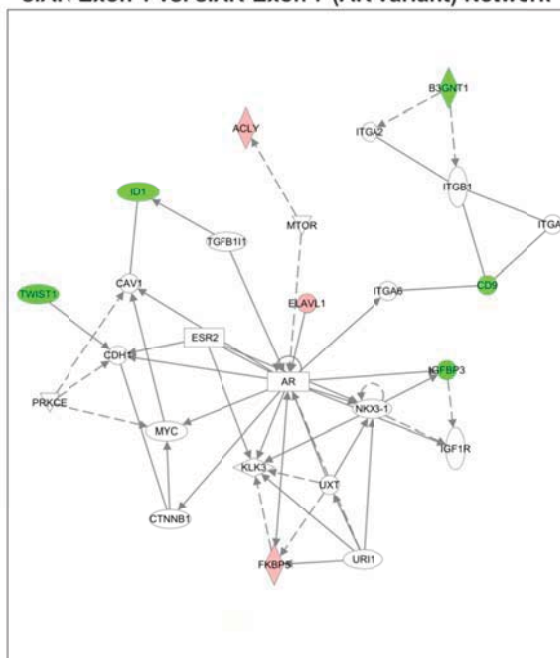
siCE3+DHT vs. siCE3 (androgen/AR) Network 2



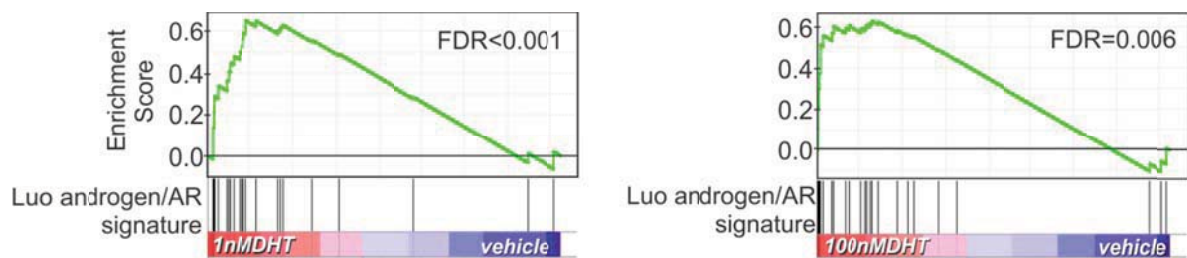
siCE3+DHT vs. siCE3 (androgen/AR) Network 3



siAR-Exon 1 vs. siAR-Exon 7 (AR-variant) Network 1



**Supplementary Figure 6.** Gene networks identified from androgen/AR (siCE3+DHT vs. siCE3) and AR-V (siAR-exon 1 vs. siAR-exon 7) gene lists using Ingenuity Systems Pathway Analysis.



**Supplementary Figure 7.** Gene set enrichment analysis (GSEA) of a full-length AR-specific gene signature in gene expression datasets derived from LNCaP cells treated with 1nM (left) vs. 100nM (right) DHT.

**Supplementary Table 1: Androgen/AR and AR-V gene lists**

Genes regulated by androgens in CWR-R1 cells transfected with siRNA targeting the AR 1/2/3/CE3 variant						
Probeset ID	p-value(siCE3+DHT vs. siCE3)	Fold-Change(siCE3+DHT vs. siCE3)	F(Treatment )	SS(Treatment )	SS(Error)	F(Error )
FKBP5	7.65E-07	3.42041	84.2781	6.33616	0.200484	1
HES6	2.52E-05	2.99365	35.1195	5.30924	0.403138	1
NPTX2	2.90E-05	2.70784	74.026	9.59595	0.345678	1
TIPARP	0.00018481	2.56108	20.3146	3.96238	0.520136	1
PGC	0.0001227	2.11727	25.9679	2.86238	0.293941	1
DPYSL4	0.00322307	2.07201	6.37764	1.84363	0.770872	1
S100P	0.00918238	2.01378	11.0608	4.35802	1.05069	1
FOSB	0.00925952	2.01271	6.78519	2.67821	1.05257	1
APOD	0.00365163	1.96194	29.7539	7.69231	0.689416	1
NT5DC3	0.000131418	1.92481	20.103	1.72229	0.228462	1
BHLHB2	4.62E-05	1.88629	25.8845	1.54972	0.159654	1
LOC93622	1.05E-06	1.83224	88.5918	1.7547	0.0528174	1
DBI	0.0495379	1.823	2.35774	1.48972	1.68491	1
SLC2A3	4.29E-07	1.82085	108.27	1.66433	0.0409919	1
C20ORF134	0.01832	1.76719	5.91246	2.05777	0.928106	1
LRRC8A	0.00154371	1.73076	10.1749	1.29883	0.340401	1
KISS1R	0.000203808	1.72037	14.3665	0.959684	0.178134	1
ETNK2	0.000957634	1.66748	10.9372	1.03935	0.25341	1
MORF4L2	0.0327137	1.66342	3.01037	1.09853	0.973111	1
LONRF1	0.000244069	1.65684	16.8755	1.02951	0.162682	1
PFKFB4	0.000717931	1.64165	11.809	0.963168	0.217499	1
LOX	4.43E-05	1.63577	26.9787	0.959869	0.0948766	1
C13ORF15	7.16E-05	1.62289	21.6403	0.852822	0.10509	1
MAP7D1	0.000298384	1.61134	15.3232	0.885792	0.154153	1
MAFB	1.84E-05	1.57465	48.3761	1.15086	0.0634394	1
KCNG1	0.000581214	1.57429	12.6354	0.808898	0.170716	1
GPT2	0.000752196	1.5741	12.5845	0.872424	0.184867	1
LOC729768	0.00143944	1.57	8.65021	0.729679	0.224944	1
CDKN2D	0.000747701	1.56915	10.6396	0.726008	0.181964	1
ODC1	0.0111117	1.54288	5.43379	0.88714	0.43537	1
GINS3	0.0028224	1.54274	7.80591	0.763038	0.26067	1
ATAD2	0.0101718	1.53811	4.75827	0.738859	0.414077	1
NCAPD3	0.00255412	1.53492	7.3297	0.676093	0.245974	1
GADD45G	0.000150009	1.53155	20.6649	0.779457	0.100583	1
PDXP	0.00713692	1.52905	5.92291	0.778376	0.350447	1
RPRC1	0.00202149	1.52871	8.3955	0.701758	0.2229	1

NPAS1	0.00781667	1.52563	5.17461	0.696934	0.359156	1
HS.10862	0.00578384	1.52122	4.7291	0.560141	0.315855	1
ARID3A	0.0162702	1.52111	4.0791	0.731359	0.478118	1
COASY	0.0354129	1.51137	4.02463	1.00684	0.667117	1
ST6GALNAC1	0.0020405	1.50806	8.47001	0.665447	0.209507	1
PECI	0.00331135	1.50739	6.78588	0.628404	0.246946	1
GALNTL4	0.0017509	1.50257	8.73687	0.640609	0.195526	1
MRFAP1	0.00810637	1.50138	6.46272	0.817125	0.337164	1
SLC6A3	8.07E-05	1.49554	28.5647	0.804517	0.075106	1
RHOB	0.00835951	1.49258	5.55613	0.690563	0.331436	1
VPS26B	0.00130206	1.49067	10.9095	0.697641	0.170527	1
STK39	0.00433322	1.48588	7.48716	0.710647	0.253108	1
SLC16A3	0.00929776	1.48435	4.37968	0.552108	0.336163	1
CHD5	0.0299714	1.48025	3.70945	0.770083	0.553601	1
CYB5A	0.00679253	1.46991	5.63138	0.597551	0.282963	1
FOXD1	0.00242873	1.46303	9.01818	0.644805	0.190668	1
SCAP	0.0126428	1.46236	5.33717	0.705809	0.352651	1
IL12A	0.000394316	1.46104	27.8329	1.10491	0.105861	1
KLK4	2.49E-05	1.45944	34.243	0.613343	0.0477639	1
SMAP2	0.000746684	1.45677	11.2118	0.533271	0.126836	1
FZD9	0.0146235	1.45435	5.03494	0.687612	0.364181	1
SLC6A8	0.0165823	1.45123	3.48543	0.496717	0.380033	1
ACSL3	0.0305889	1.44741	3.20612	0.597573	0.497027	1
CHPT1	0.0304862	1.43757	2.86998	0.514507	0.478058	1
GHR	0.000307225	1.43496	14.9593	0.499867	0.0891071	1
KLF9	0.0306443	1.43441	3.47398	0.61684	0.473493	1
ELOVL6	0.0263144	1.43004	2.95834	0.479772	0.432469	1
TSPAN33	0.000443836	1.42394	17.8136	0.636878	0.0953397	1
DAGLB	0.0263395	1.42148	2.86492	0.449358	0.418262	1
SPRY1	0.000149564	1.42077	18.0156	0.460835	0.0682128	1
DDX41	0.0235745	1.41958	3.31005	0.48905	0.393993	1
RNF103	0.0412361	1.41885	2.38746	0.463701	0.517929	1
MFSD2	0.000233103	1.41715	20.5584	0.589943	0.0765227	1
PDIA5	0.00236514	1.41424	9.26447	0.544632	0.156766	1
SLC2A1	0.0304804	1.41341	3.85634	0.628224	0.434418	1
GAL	0.00265908	1.41179	10.89	0.659769	0.16156	1
HSD17B1	0.00752451	1.41049	4.77281	0.419935	0.234626	1
ATPIA1	0.00405451	1.40997	6.75437	0.47112	0.186001	1
HS.567759	0.0452213	1.40225	1.93212	0.368124	0.508077	1
ALDOC	0.00944538	1.40137	6.57293	0.608606	0.246914	1
HOMER2	0.000884402	1.40107	11.9385	0.481207	0.107486	1

CYB5D1	0.0244382	1.39359	3.13393	0.422512	0.359516	1
GBE1	0.0223831	1.39322	3.17505	0.410308	0.34461	1
XPR1	0.00562923	1.3892	5.57852	0.401635	0.191991	1
TMEM145	0.0130141	1.38916	8.95706	0.896796	0.266991	1
DDIT4	0.00429053	1.38745	5.39606	0.348962	0.172453	1
CRELD2	0.000842371	1.38709	17.4961	0.653787	0.0996466	1
NCLN	0.0480052	1.38528	2.91423	0.533053	0.48777	1
FAM174B	0.00180786	1.38416	11.39	0.53808	0.125977	1
BNIP3L	0.0184164	1.38367	3.57288	0.405418	0.302589	1
CAV1	0.000274171	1.38226	18.1047	0.469912	0.0692138	1
INSIG1	0.0114145	1.382	5.98092	0.549513	0.245007	1
UNC119	0.00791392	1.38082	8.75346	0.691285	0.210594	1
ABCC4	4.79E-05	1.37975	29.246	0.455112	0.0414974	1
ACSS2	0.0441101	1.37795	3.13762	0.530444	0.450825	1
WDR41	0.0223552	1.37602	3.52376	0.421635	0.31908	1
ELAVL1	0.0134147	1.37425	5.86853	0.556662	0.252948	1
ERN1	0.0137994	1.37143	5.03858	0.477425	0.252677	1
LIX1L	0.00619965	1.37118	6.28263	0.432488	0.18357	1
SLC6A10P	0.0447379	1.37055	2.58619	0.425874	0.439126	1
GADD45B	1.07E-05	1.36686	33.8669	0.329364	0.0259339	1
PFKP	0.0308204	1.36356	4.38149	0.57646	0.350846	1
SDF2L1	0.02826	1.36025	2.76356	0.343095	0.331066	1
ARMET	4.46E-05	1.35866	25.7999	0.356737	0.0368721	1
ZDHHC9	0.000411997	1.35843	16.9501	0.445091	0.0700237	1
DHX32	0.0189874	1.35472	3.46043	0.347885	0.268086	1
ASB9	0.000197648	1.35389	17.2288	0.355718	0.0550578	1
RHOV	0.0480207	1.35327	2.55086	0.402118	0.420373	1
ANKZF1	0.00137304	1.35238	8.61579	0.320494	0.0991958	1
SRPK1	0.0439745	1.34816	2.42696	0.35566	0.390789	1
LOC100131330	0.00111248	1.34319	8.99818	0.298695	0.0885202	1
UBE2M	0.0200859	1.34316	3.21447	0.312963	0.259628	1
LOC731835	0.00679101	1.34129	5.79336	0.357186	0.164411	1
ELF3	0.0027502	1.33743	9.01751	0.392879	0.116183	1
KLF15	0.00966167	1.33468	4.62911	0.316564	0.182362	1
C2ORF7	0.00132952	1.33407	15.7384	0.528187	0.0894947	1
CMAS	0.0155794	1.33363	3.42696	0.284117	0.221083	1
LOC387763	0.000998454	1.33253	12.3472	0.374826	0.0809521	1
LOC732007	0.00424007	1.33005	6.05147	0.295613	0.130266	1
LASS6	0.0166391	1.32849	5.31774	0.441509	0.221402	1
SOX9	0.00292801	1.325	12.0951	0.504512	0.111232	1
PIM2	0.0331199	1.32444	2.91841	0.326723	0.298539	1

SERTAD2	0.0105981	1.32058	4.6949	0.309168	0.175605	1
F2RL1	0.0148943	1.32017	4.54368	0.343914	0.201842	1
EDEM1	0.0246777	1.31979	3.1191	0.295288	0.252456	1
BCKDK	0.014412	1.31921	3.66444	0.272071	0.197991	1
CCRN4L	0.0243877	1.31879	3.32255	0.311092	0.249681	1
LOC731049	0.0372518	1.31833	2.97248	0.341687	0.306534	1
NSDHL	0.000336824	1.31779	20.1278	0.403661	0.0534798	1
PDCD4	0.000390244	1.31662	19.2455	0.400858	0.0555431	1
LOC154761	0.00084718	1.31563	12.6219	0.332088	0.0701611	1
ACOT7	0.0187112	1.31464	5.34559	0.433497	0.216252	1
GRPEL1	0.00112379	1.31351	9.90623	0.281837	0.0758679	1
WDR45L	0.000258628	1.31336	15.4542	0.279539	0.0482354	1
MAP6D1	0.00286747	1.31326	6.90235	0.268037	0.103554	1
RHOBTB2	0.0103439	1.31269	4.85038	0.302796	0.166473	1
GFOD2	0.0201284	1.31073	3.69546	0.30293	0.218596	1
HES7	0.0189747	1.30826	3.62101	0.285066	0.209935	1
LOC387703	0.0477945	1.30606	2.18187	0.267257	0.326639	1
TFB1M	0.0333406	1.30595	3.29524	0.334027	0.270311	1
C6ORF81	0.000573289	1.30507	12.027	0.263922	0.0585178	1
SLC25A22	0.00728908	1.30441	5.18877	0.269239	0.13837	1
PCYT2	0.0175054	1.30247	3.89855	0.286463	0.195945	1
LOC100129668	0.0358644	1.30192	3.09742	0.318264	0.274004	1
PPP2CB	0.018807	1.30118	4.20365	0.316457	0.200751	1
RNF150	7.33E-05	1.30026	20.9487	0.244314	0.0311	1
C20ORF20	0.00789422	1.29747	5.11854	0.263027	0.137032	1
TPI1	0.0310653	1.29715	2.81229	0.261463	0.247924	1
SRM	0.0212644	1.29606	4.26861	0.329512	0.205851	1
UPP1	0.000728626	1.29575	10.5267	0.235637	0.0596924	1
CBLL1	0.000267573	1.29469	19.7349	0.323695	0.043739	1
ADRM1	0.00998897	1.29419	7.31039	0.404266	0.147467	1
HK2	0.0468556	1.29385	2.21656	0.250015	0.300784	1
ANGPTL4	0.0213257	1.29367	2.87232	0.218866	0.203195	1
TRIP13	0.0213194	1.29342	3.18206	0.242067	0.20286	1
RHOBTB3	0.0060568	1.29275	6.3754	0.287837	0.120395	1
COPS8	0.0086999	1.29176	4.83459	0.249387	0.137557	1
DLX1	0.00109045	1.29069	11.8959	0.293484	0.0657892	1
SLC2A6	0.0206572	1.29014	4.56671	0.335743	0.196053	1
AGTRAP	0.0340457	1.28922	3.05646	0.283574	0.24741	1
PEG10	0.00935376	1.28857	6.88766	0.358607	0.13884	1
C15ORF23	0.0067309	1.28839	6.19774	0.283593	0.12202	1
CCND3	0.00276062	1.28646	7.63978	0.250164	0.0873196	1



TTF2	0.0323074	1.28254	2.6172	0.226954	0.231243	1
ZFP36	0.00731884	1.28192	6.06598	0.275342	0.121043	1
CMTM7	0.0155853	1.28075	3.82829	0.23449	0.163339	1
TMEM149	0.00838254	1.28011	4.1494	0.196275	0.126139	1
ITPKA	0.0270287	1.27838	3.45785	0.267742	0.206481	1
WISP2	0.0190643	1.27537	3.4698	0.224321	0.172399	1
INSIG2	0.0137872	1.27382	3.84317	0.21373	0.148301	1
ITGAV	0.0225311	1.27368	3.12664	0.215662	0.183935	1
TMEM97	0.000320952	1.27334	13.4847	0.204398	0.0404207	1
SNCB	0.00669929	1.2732	6.02086	0.249877	0.110672	1
CEP55	0.0307413	1.27298	2.68838	0.213994	0.212266	1
TOMM40	0.028895	1.27111	3.76627	0.287342	0.20345	1
P4HA2	0.00400386	1.26931	7.25781	0.242798	0.0892091	1
TYMS	0.00971626	1.26843	4.35834	0.202643	0.123988	1
SLC7A5	0.0381485	1.26765	3.51406	0.301154	0.228533	1
LOC286016	0.00811593	1.26733	4.11401	0.176863	0.114641	1
CLPTM1L	0.0474098	1.26702	3.02087	0.289409	0.255476	1
QSOX2	0.0282193	1.26688	3.58411	0.262871	0.195583	1
CLK3	0.0060221	1.26677	6.69772	0.255908	0.101889	1
PSMD8	0.0267623	1.26564	3.1308	0.221997	0.189087	1
PPME1	0.0366065	1.26517	2.97236	0.245273	0.220048	1
TBC1D4	0.000291136	1.26468	19.6889	0.273734	0.0370746	1
NDRG4	0.024933	1.26357	3.11287	0.210501	0.180328	1
JPH1	0.0219463	1.26352	4.07628	0.259696	0.169891	1
SHPK	0.0234513	1.26349	4.65616	0.305795	0.175135	1
SLC25A4	0.00183809	1.26329	12.1918	0.299338	0.0654729	1
VCP	0.000556431	1.26304	10.202	0.170632	0.0446012	1
HK1	0.0110306	1.263	4.53649	0.214073	0.125838	1
IRS2	0.00396626	1.26135	9.2998	0.293911	0.0842772	1
AP4E1	0.00191454	1.26112	11.4429	0.280638	0.0653999	1
FAM104A	0.032241	1.26104	2.38215	0.179273	0.200685	1
BCL2L12	0.0133864	1.26083	5.28264	0.266091	0.134322	1
XPNPEP1	0.0302627	1.26063	2.81682	0.204897	0.193975	1
MNX1	0.0408555	1.26059	2.765	0.234166	0.225838	1
KCTD13	0.0481757	1.26022	2.99649	0.276596	0.246152	1
GMPPB	0.0407027	1.25981	2.96812	0.249533	0.224189	1
MCCC1	0.0420134	1.2594	2.84668	0.242675	0.227329	1
VKORC1	0.00928546	1.258	4.28766	0.182431	0.113461	1
LOC440043	0.044316	1.25788	1.96515	0.170569	0.231459	1
PELO	0.0014877	1.25784	8.50919	0.187648	0.0588065	1
TLCD1	0.0326589	1.25627	2.58882	0.189729	0.195435	1

STC2	0.0158113	1.25622	5.04343	0.264147	0.139665	1
BARD1	0.00241717	1.25575	6.95808	0.177911	0.068184	1
KLHL29	0.0126011	1.25542	4.11318	0.194587	0.126155	1
RNF126	0.028332	1.25529	2.84134	0.192887	0.181029	1
NOLC1	0.00168326	1.25515	8.76298	0.197543	0.0601143	1
EGLN1	8.82E-05	1.25477	21.2057	0.194711	0.0244853	1
EFCAB3	0.0102557	1.25391	6.82871	0.29382	0.114739	1
TSPYL2	7.62E-05	1.25245	27.4932	0.238273	0.023111	1
GSTO1	0.000430122	1.25184	17.0499	0.243883	0.0381442	1
C18ORF8	0.000254634	1.25078	14.1671	0.171888	0.0323543	1
CAP2	0.00132553	1.2494	10.7184	0.214461	0.0533566	1
C10ORF39	0.00625523	1.24927	5.90386	0.202687	0.0915501	1
VCL	0.0209055	1.24824	4.66582	0.26128	0.14933	1
PREP	0.029758	1.24701	2.74191	0.179688	0.174757	1
PAXIP1	0.0204828	1.24655	3.36498	0.184429	0.146156	1
P4HA1	0.0197909	1.24645	3.21229	0.173228	0.143804	1
C9ORF91	0.0334236	1.24529	2.72093	0.186502	0.182782	1
NELL2	0.00945158	1.24498	4.97818	0.194406	0.104137	1
PPP2R5B	0.0285319	1.24472	2.87206	0.181353	0.168384	1
UTP11L	0.0138101	1.24439	3.93894	0.178912	0.121123	1
UNC5A	0.028661	1.24362	2.92981	0.183909	0.167391	1
WDYHV1	0.0187308	1.24265	3.15942	0.161661	0.136448	1
INPP1	0.00209825	1.24217	9.70183	0.214389	0.0589276	1
C16ORF57	0.029382	1.23984	3.0551	0.188712	0.164719	1
CNTFR	0.0294294	1.23965	2.96808	0.183226	0.164619	1
SLC39A3	0.0251775	1.23922	2.62844	0.150087	0.15227	1
FAM158A	0.0332454	1.23845	2.21521	0.143933	0.173266	1
NDUFS7	0.0231211	1.23706	3.12829	0.168873	0.143954	1
CYGB	0.026593	1.23702	3.35731	0.193495	0.15369	1
DNM1L	0.000123811	1.23661	19.5085	0.172813	0.0236221	1
THBS1	0.00835903	1.23649	7.98566	0.278812	0.0931041	1
LETM1	0.0330421	1.23633	2.5775	0.164292	0.169976	1
UCK2	0.00515094	1.23479	5.93264	0.17012	0.0764671	1
CDK6	0.0462175	1.23476	2.53973	0.190506	0.200028	1
PSMB2	0.00349688	1.23346	7.02857	0.173461	0.0658118	1
HAGH	0.0224527	1.23204	4.08617	0.209377	0.136641	1
CHSY1	0.0236556	1.23094	4.22442	0.219865	0.13879	1
AURKB	0.0189457	1.22806	4.84005	0.222587	0.122636	1
GSTM1	0.0287644	1.22758	5.41602	0.301203	0.148302	1
LYN	0.0222753	1.22717	2.98314	0.146578	0.131028	1
TNFAIP3	0.00308184	1.22633	7.97327	0.177958	0.0595182	1

RRP7A	0.0353869	1.22592	2.22791	0.135513	0.1622	1
WIPI1	0.0134224	1.22561	4.49427	0.174619	0.10361	1
SLC25A13	0.0177424	1.22536	8.83529	0.386267	0.116583	1
MRPL17	0.021549	1.22493	3.45911	0.16443	0.126761	1
GCLM	0.00515623	1.2244	5.83912	0.154351	0.0704907	1
E2F4	0.0390496	1.2239	3.01429	0.189767	0.167883	1
PSMB3	0.00795024	1.22378	4.96698	0.153904	0.0826277	1
PGAM4	0.0230494	1.2236	2.78875	0.13527	0.129349	1
LOC284422	0.0423407	1.2234	3.16844	0.207294	0.174466	1
POLS	0.047283	1.22291	2.64715	0.183086	0.184436	1
POPI	0.0362152	1.22285	2.35734	0.141542	0.160115	1
KIAA0020	0.0184969	1.22209	4.63564	0.201038	0.115648	1
HS.19339	0.000981667	1.22152	9.112	0.133662	0.0391168	1
HPGD	0.00120535	1.22041	11.5172	0.178809	0.0414008	1
ALDH18A1	0.0129835	1.21894	3.54802	0.128746	0.0967649	1
CD19	0.0459728	1.2186	2.5988	0.170847	0.175309	1
PDK3	0.00274281	1.21786	10.2258	0.204536	0.0533388	1
PEBP4	0.0186921	1.21734	3.5928	0.150516	0.111717	1
RELL2	0.0375089	1.21723	3.90256	0.227767	0.155636	1
CDC45L	0.0210284	1.21633	3.64762	0.159763	0.116798	1
CLEC16A	0.00403489	1.21468	9.25756	0.206552	0.0594979	1
C1ORF116	0.0346163	1.21467	7.0687	0.387565	0.146209	1
LOC100130511	0.00737261	1.21411	4.59935	0.127749	0.0740678	1
HMOX1	0.0436251	1.21401	4.23341	0.260322	0.163979	1
PAICS	0.0464648	1.2138	4.00725	0.2545	0.16936	1
NR5A2	0.0108161	1.21089	4.42012	0.13898	0.0838465	1
FAM40A	0.00503295	1.20937	5.71748	0.132067	0.061597	1
KIAA2010	0.0240744	1.20792	3.16571	0.137302	0.115657	1
KCTD9	0.0405817	1.20722	3.0013	0.167483	0.148809	1
WASF3	0.0386334	1.2069	3.44346	0.186758	0.144628	1
TMEM64	0.0341541	1.20608	2.23985	0.11324	0.134818	1
LOC400013	0.0276251	1.20528	2.51902	0.113921	0.120599	1
AXUD1	0.0394881	1.20465	3.05448	0.164259	0.143403	1
C16ORF93	0.0491096	1.20442	3.71003	0.223829	0.160882	1
IQCB1	0.00149515	1.20432	9.21813	0.133746	0.0386906	1
HERC3	0.00811273	1.2043	5.04184	0.133435	0.0705747	1
PIP4K2A	0.0115962	1.20383	3.91224	0.11894	0.0810718	1
CP110	0.00723839	1.20246	5.63304	0.1403	0.0664176	1
B4GALNT1	0.0157536	1.20228	3.46893	0.118311	0.0909493	1
DEPDC6	0.000487814	1.20222	12.5185	0.125089	0.0266462	1
PIAS1	0.00155044	1.20128	9.79775	0.139974	0.0380969	1

LOC728139	0.00626663	-1.20083	5.20997	0.121033	0.0619496	1
FBXW4	0.0246045	-1.20091	3.35272	0.137989	0.109753	1
SH3BP4	0.0126317	-1.20114	3.55885	0.109406	0.0819782	1
ZNRD1	0.0223357	-1.20168	3.37466	0.133719	0.105665	1
EPN3	0.0130161	-1.20199	4.03748	0.126654	0.0836521	1
MMP28	0.0011828	-1.20202	8.66685	0.11413	0.0351161	1
SARS	0.00733343	-1.20245	8.41153	0.210538	0.0667459	1
ANTXR2	0.00376662	-1.20291	10.0563	0.197529	0.0523796	1
HSPBL2	0.02782	-1.20297	4.51162	0.200533	0.118528	1
RND2	0.00720192	-1.20454	4.36353	0.110519	0.0675407	1
MRPS18B	0.0369114	-1.20559	2.42197	0.12683	0.139644	1
C6ORF48	0.0025436	-1.2072	10.2263	0.181914	0.0474372	1
FLJ40125	0.00536699	-1.20926	9.43228	0.222904	0.0630189	1
LOC100133008	0.038542	-1.20991	3.73785	0.207878	0.148305	1
HS.552826	0.00253149	-1.21011	6.94447	0.126512	0.0485804	1
GOLSYN	0.0123987	-1.21046	4.85359	0.160815	0.0883553	1
E2F5	0.0160119	-1.21052	5.55615	0.205247	0.098508	1
LOC728755	9.64E-05	-1.2118	28.481	0.192169	0.0179927	1
SFTPD	0.00208887	-1.21269	7.04843	0.122979	0.0465272	1
LOC100128353	0.0344332	-1.21289	3.3314	0.179437	0.143633	1
FLOT1	0.0358949	-1.2133	2.81334	0.155306	0.147209	1
MYD88	0.00630122	-1.21387	8.49981	0.221912	0.069621	1
ABR	0.00257794	-1.21389	7.74553	0.146674	0.0504975	1
TMEM18	0.000103651	-1.21402	20.1932	0.14176	0.0187205	1
TSPAN10	0.00324855	-1.21414	9.11365	0.187402	0.0548341	1
CGN	0.0164543	-1.21499	5.1479	0.199924	0.103563	1
APEX1	0.00746476	-1.21501	4.53548	0.127553	0.0749955	1
HNRNPA0	0.0389217	-1.2153	4.85512	0.284189	0.15609	1
ICA1	0.000732285	-1.21597	16.9139	0.216002	0.0340551	1
LOC728229	0.00446282	-1.21619	6.09539	0.142843	0.0624921	1
PLL	0.000560978	-1.2164	11.5628	0.136442	0.0314668	1
VWF	0.018074	-1.2164	3.99402	0.163558	0.109202	1
ZSCAN18	0.00201812	-1.21708	8.99603	0.161019	0.0477303	1
GATS	0.000890899	-1.21746	9.31082	0.128059	0.0366767	1
SGSM3	0.0442699	-1.21784	2.25274	0.144189	0.170683	1
AIG1	0.0320108	-1.21815	2.96391	0.160899	0.144763	1
PHLDA3	0.028983	-1.21824	2.9618	0.15324	0.13797	1
HS.8038	0.00109786	-1.21864	10.2302	0.151882	0.0395905	1
TSTD1	0.00439713	-1.21888	6.4175	0.152976	0.0635661	1
RNF130	0.00510613	-1.21921	7.67014	0.193634	0.0673206	1
HS.31532	0.00217397	-1.22006	8.52495	0.160384	0.0501692	1

FLJ90086	0.000411319	-1.22037	11.5318	0.127929	0.0295831	1
ANXA11	0.00398072	-1.22041	7.33755	0.170902	0.0621104	1
LARP6	5.49E-05	-1.22162	24.4812	0.15303	0.0166691	1
CYTH2	0.047715	-1.22193	2.56429	0.176815	0.183874	1
LOC389672	0.0284785	-1.22243	2.61882	0.139058	0.141599	1
TRIP6	0.0223495	-1.22274	3.58061	0.170034	0.126633	1
CYB5D2	0.0178983	-1.22313	4.74007	0.204316	0.114944	1
ARSD	0.000477149	-1.2234	12.1236	0.144225	0.0317234	1
AMHR2	0.00640132	-1.22391	9.21271	0.26297	0.0761179	1
P2RX4	0.0195831	-1.22396	2.95752	0.133578	0.120442	1
CASQ1	0.000382496	-1.22455	12.0804	0.135646	0.0299429	1
CD63	0.0161774	-1.22466	3.95996	0.165338	0.11134	1
NCALD	0.00744381	-1.22516	6.7265	0.205457	0.0814516	1
OSBPL5	0.0356104	-1.22517	2.6521	0.160859	0.161743	1
ITGB5	0.0172426	-1.2256	4.38554	0.189704	0.115351	1
TSPAN15	0.0184015	-1.22564	2.99204	0.133227	0.118739	1
ACP2	0.0418201	-1.2259	4.35635	0.288909	0.176851	1
PRPSAP1	0.00426606	-1.22616	6.30251	0.157677	0.066715	1
IRF2BP2	0.00708665	-1.22656	5.13859	0.155751	0.0808271	1
KIAA0141	0.0363736	-1.22745	2.41265	0.150656	0.166518	1
LPAR5	0.0189713	-1.22752	5.70451	0.261372	0.122182	1
C9ORF103	0.0223365	-1.22801	3.5878	0.177689	0.132069	1
GLIPR2	0.00215895	-1.22817	8.80506	0.176466	0.0534439	1
LASP1	0.0383098	-1.22872	2.22732	0.144284	0.172744	1
PRRG2	0.01058	-1.22873	6.64663	0.239993	0.0962866	1
UNC119B	0.0197355	-1.22911	3.37429	0.159356	0.125938	1
HS.559604	0.0391854	-1.22922	2.75416	0.18123	0.175473	1
TMEM62	0.000198644	-1.22948	17.3	0.166312	0.0256357	1
FLJ32252	0.00238204	-1.22974	7.37912	0.154814	0.0559467	1
BCAR3	0.00370696	-1.23004	6.40311	0.157087	0.0654211	1
LOC729926	0.0213471	-1.23031	3.44091	0.169978	0.131732	1
C10ORF57	0.0209204	-1.23127	4.75469	0.234476	0.131506	1
IGSF9	0.0179381	-1.23159	5.48216	0.25299	0.123061	1
FAM46B	0.026685	-1.23164	4.5198	0.250327	0.147692	1
LOC201229	0.00103037	-1.23188	9.74242	0.157641	0.0431489	1
PCDH19	0.00602381	-1.23317	7.52215	0.225794	0.0800458	1
CCDC92	0.0123843	-1.23378	4.57447	0.18327	0.106836	1
IER5	0.00624369	-1.23455	6.97078	0.214364	0.0820048	1
BCL2L2	0.0238018	-1.23484	2.61207	0.140522	0.143459	1
ADCY6	0.0456385	-1.23491	1.95483	0.145804	0.198897	1
CDC42EP2	0.0233931	-1.23509	5.59872	0.299346	0.142578	1

SFRS2B	0.00217544	-1.23521	7.53997	0.160038	0.0566007	1
LOC388564	0.0209949	-1.23595	7.83618	0.401324	0.136571	1
ITGA3	0.0128679	-1.23596	4.36858	0.180837	0.110387	1
ZNF787	0.0493368	-1.23732	2.21669	0.175742	0.211417	1
COX7A2L	0.00917741	-1.2376	4.66488	0.170408	0.0974136	1
LOC729843	0.0210508	-1.23824	3.47263	0.181179	0.139129	1
MAP4K1	0.0003889	-1.23842	12.8587	0.161698	0.0335333	1
YPEL3	0.0182327	-1.2386	4.38684	0.215178	0.130802	1
KIAA1199	0.000438868	-1.2394	13.7507	0.180688	0.0350408	1
LAD1	0.00559147	-1.23974	5.63963	0.1731	0.0818492	1
PCK2	0.0469869	-1.24051	2.21062	0.174774	0.21083	1
LRRC26	0.0263455	-1.24134	7.24953	0.429702	0.158061	1
XPC	0.0461144	-1.2427	2.1461	0.170709	0.212117	1
GADD45A	0.00539876	-1.24378	5.48703	0.171303	0.0832523	1
HS.535392	0.0112557	-1.24395	5.37484	0.22353	0.110902	1
NINJ1	0.0220921	-1.24426	4.72911	0.263823	0.148765	1
ATP9A	4.23E-05	-1.24465	26.4398	0.183676	0.0185251	1
APPL2	0.0184502	-1.2451	3.17962	0.164549	0.138003	1
FAM134C	0.0117325	-1.24537	4.08089	0.174438	0.113987	1
KHDC1	0.0136015	-1.24658	4.10956	0.188455	0.122287	1
RPUSD4	0.0129461	-1.2466	3.59522	0.16152	0.119804	1
LOC100131735	0.039712	-1.24766	3.25303	0.247781	0.203118	1
SNTB1	0.000265298	-1.24826	20.7927	0.250775	0.032162	1
KIAA0363	0.00888731	-1.24925	11.08	0.435559	0.104828	1
GALM	0.00133692	-1.24945	8.74574	0.175541	0.0535242	1
LOC100131713	0.0201168	-1.24966	4.79639	0.266687	0.148271	1
LOC149501	0.00697955	-1.25042	5.33704	0.192605	0.0962357	1
ALDH3B2	0.0215538	-1.25135	3.60938	0.209585	0.154845	1
TMEM118	0.00206767	-1.25214	7.92085	0.187251	0.0630407	1
C1ORF53	0.0122974	-1.25234	8.12525	0.372364	0.122208	1
KDM5B	0.0204729	-1.25468	3.58063	0.207945	0.154866	1
LRRC56	0.0189076	-1.25472	3.38386	0.189678	0.149477	1
CANT1	0.0426447	-1.25579	3.08819	0.258792	0.223468	1
LMO1	0.0112807	-1.25605	6.40536	0.290794	0.121063	1
SBK1	0.00158606	-1.25664	8.26046	0.184502	0.0595614	1
C11ORF52	0.00148247	-1.25688	8.1559	0.178457	0.0583487	1
COQ9	0.000919023	-1.25794	10.552	0.199344	0.0503777	1
CLSTN1	0.0487511	-1.25828	2.11488	0.193882	0.244467	1
LOC391578	0.032575	-1.25871	2.50621	0.186576	0.198521	1
LOC646723	0.0250919	-1.26072	3.22869	0.214773	0.177387	1
MFSD6	0.0161252	-1.26073	3.45037	0.188029	0.145321	1

XBP1	0.00729036	-1.26208	5.65959	0.225299	0.106155	1
ZNF444	0.0309465	-1.26245	2.62934	0.195777	0.198556	1
KLHDC8B	0.0338394	-1.26265	3.8094	0.296951	0.207873	1
GSTT1	0.0474357	-1.26269	2.67837	0.249294	0.248205	1
LOC647169	0.00621113	-1.26395	6.39072	0.242395	0.101145	1
HIST1H2BK	0.0147841	-1.26493	5.7451	0.310337	0.144047	1
CALHM2	0.0198102	-1.26515	2.92816	0.180049	0.16397	1
HIST3H2A	0.0160256	-1.26577	5.56392	0.312904	0.149968	1
CLIC1	0.0262659	-1.26629	2.7716	0.195632	0.188225	1
RHOC	0.00599548	-1.26716	5.17897	0.198063	0.101983	1
WBSCR27	0.00794489	-1.26732	5.11944	0.218255	0.113687	1
ACTA2	0.00996963	-1.2676	7.02958	0.328423	0.124587	1
MTMR11	0.000436384	-1.26844	19.7093	0.317342	0.0429362	1
LOC387825	0.00115638	-1.26929	9.81741	0.215541	0.0585467	1
CDC25B	0.0359915	-1.2693	2.16183	0.181787	0.224238	1
GBP2	0.000258461	-1.26993	18.295	0.254259	0.0370607	1
CD2BP2	0.0134025	-1.27032	4.6561	0.250081	0.143228	1
LOC340598	0.00198138	-1.27145	9.59366	0.255027	0.0708876	1
PLA2G4B	0.0453512	-1.27164	1.90538	0.183702	0.257099	1
DDR1	0.0433909	-1.27213	2.5952	0.245121	0.251871	1
ARHGEF16	0.0327749	-1.27282	2.47288	0.202982	0.218889	1
TMEM98	0.013567	-1.27308	3.53731	0.194448	0.146588	1
SLPI	0.0230802	-1.27351	5.41196	0.377055	0.185788	1
ARHGEF3	0.0010847	-1.27482	12.8928	0.287508	0.0594663	1
FAIM2	0.00257402	-1.27505	8.3538	0.24847	0.0793155	1
MDK	0.010813	-1.27522	4.05723	0.2059	0.13533	1
MALL	0.00364316	-1.27556	7.75738	0.26136	0.0898447	1
SPATA20	0.00576647	-1.27589	6.3287	0.252559	0.106418	1
CD44	0.0262195	-1.27646	3.09157	0.23307	0.201037	1
LOC645381	0.0013696	-1.27656	10.2635	0.249588	0.0648482	1
ZFP36L1	0.0483853	-1.2771	2.81018	0.290787	0.275937	1
FYCO1	0.00131353	-1.27779	9.46416	0.228834	0.0644775	1
EFNB3	0.0368701	-1.27833	3.26692	0.294908	0.240723	1
FLJ10986	0.00464185	-1.27873	7.25603	0.272198	0.100036	1
TUFT1	0.00743636	-1.2788	4.46572	0.199962	0.119406	1
LOC388076	0.0398763	-1.2793	2.53826	0.240099	0.252245	1
CEBPA	0.0189943	-1.28008	4.36778	0.290507	0.177364	1
DNAJC22	0.0123344	-1.28079	5.54455	0.307731	0.148004	1
LOC678655	0.00259357	-1.28173	8.62894	0.268497	0.0829756	1
SERPINB1	0.0122474	-1.28227	4.23127	0.236348	0.148953	1
C10ORF65	7.60E-05	-1.28273	19.8071	0.209865	0.0282546	1

PRDM8	0.00172766	-1.28273	11.1476	0.304283	0.0727888	1
LAMB3	0.00506516	-1.28414	8.02108	0.321429	0.106862	1
PPL	0.00309682	-1.28444	6.59097	0.221821	0.0897473	1
CIB2	0.0122996	-1.28474	5.65344	0.321262	0.151536	1
POMGNT1	0.00951761	-1.28481	4.36741	0.223717	0.136598	1
KLHDC9	0.0208068	-1.2854	2.98332	0.213735	0.191049	1
PPP1R1B	0.00355738	-1.2866	8.31746	0.297895	0.0955084	1
FOXJ3	0.0381483	-1.28928	2.09129	0.205707	0.262302	1
FAM43A	0.00305297	-1.29195	7.23027	0.253541	0.0935107	1
C14ORF93	0.0261743	-1.29226	4.74245	0.394148	0.221629	1
SNAPIN	0.0018097	-1.29312	9.89065	0.292232	0.0787902	1
TLE1	0.0149653	-1.29322	5.36793	0.348918	0.173335	1
ERGIC3	0.0137241	-1.29454	3.50168	0.221134	0.168402	1
PLCXD1	0.0207925	-1.29544	2.81747	0.214488	0.203007	1
FUCA1	0.00165054	-1.29553	7.90859	0.229933	0.0775303	1
EMP1	0.0232723	-1.29667	2.82828	0.228396	0.215345	1
LOC391833	0.00762772	-1.29696	4.89592	0.247508	0.13481	1
LOC100128098	0.00133192	-1.30124	12.2803	0.344165	0.0747354	1
ATF4	0.000145011	-1.30182	20.3591	0.291145	0.0381347	1
MYOF	0.00478046	-1.30343	5.53058	0.243622	0.117467	1
OCIAD2	0.0485847	-1.30394	2.54535	0.310776	0.325588	1
SAT2	0.00334547	-1.30522	7.8848	0.308745	0.104419	1
EFHD1	0.0131086	-1.30543	3.85277	0.254402	0.176083	1
ZNF185	0.00361547	-1.30743	9.35446	0.381286	0.108693	1
BCL3	0.00090822	-1.30898	11.2468	0.291413	0.069095	1
PRMT6	0.0209409	-1.30955	4.73519	0.392545	0.221066	1
SLC22A18	0.0205101	-1.30974	3.03183	0.24925	0.21923	1
DBNDD1	0.0463087	-1.31001	2.33784	0.287867	0.328357	1
COMM7	0.00211526	-1.31208	9.65128	0.335481	0.092694	1
ATP6V0E2	0.00168027	-1.31212	11.8167	0.380387	0.0858415	1
SLC2A10	0.00349165	-1.31341	6.409	0.266869	0.111039	1
FXYD3	0.000121051	-1.31365	20.9334	0.304006	0.0387266	1
VASN	0.000305258	-1.31379	19.0497	0.362852	0.0507936	1
FER1L3	0.00886468	-1.31542	6.13336	0.365528	0.158924	1
LOC643856	0.00332778	-1.31691	7.37931	0.308042	0.111317	1
ZBTB42	0.00914152	-1.31735	6.70593	0.408891	0.162598	1
FOXD2	0.00208269	-1.31761	6.66143	0.237534	0.0950885	1
PRRT3	0.000275288	-1.31916	16.8624	0.320836	0.0507378	1
LIMA1	0.00743353	-1.32049	6.96473	0.398481	0.152571	1
DKK3	8.66E-05	-1.32333	26.2701	0.365599	0.0371117	1
CRIP1	0.00750404	-1.3234	4.20386	0.24523	0.155559	1



ACOX2	0.0144771	-1.32483	11.3349	0.869255	0.204502	1
CAPN5	0.00665538	-1.32545	6.29401	0.354544	0.150214	1
PIK3IP1	0.00421186	-1.32796	7.20359	0.347184	0.128523	1
HS.28456	0.000648454	-1.32861	12.8598	0.333855	0.0692294	1
C14ORF78	0.00169572	-1.33152	11.4446	0.410539	0.0956583	1
FGD3	0.0175663	-1.33747	3.72719	0.332091	0.237599	1
TNFRSF11B	0.000549906	-1.33838	14.4339	0.374724	0.0692305	1
LRP10	0.0170834	-1.33921	3.561	0.316248	0.236823	1
DUSP6	0.00113798	-1.3399	8.43882	0.277507	0.0876921	1
S100A4	0.00408795	-1.34038	6.09111	0.309808	0.135633	1
FOXQ1	0.00101956	-1.34484	9.18945	0.299119	0.0868006	1
SMAGP	0.00219102	-1.34516	7.41881	0.311006	0.111179	1
TRIB1	5.46E-05	-1.34525	32.7687	0.448974	0.0365369	1
BLOC1S1	0.047093	-1.34615	2.59389	0.390562	0.401519	1
MMP10	0.00796963	-1.34687	7.29008	0.491637	0.179838	1
HEBP2	0.00721763	-1.34712	9.03569	0.587204	0.173299	1
LMO4	2.27E-06	-1.34784	59.3138	0.349133	0.0156965	1
CCDC102A	0.0180642	-1.3491	4.21721	0.403403	0.255084	1
LITAF	5.71E-05	-1.35155	25.4509	0.364253	0.0381654	1
PPAP2B	1.91E-05	-1.35335	31.4379	0.335386	0.0284486	1
EPHX1	0.00421714	-1.35346	7.60259	0.417409	0.146409	1
FOXA1	0.0175729	-1.35355	3.18396	0.307552	0.257585	1
GPR162	0.00209186	-1.35466	10.4456	0.451802	0.115341	1
C1ORF106	0.00966517	-1.35502	4.37225	0.331186	0.201993	1
CLCNKA	0.0148036	-1.35509	6.95919	0.628766	0.240935	1
FAM108C1	0.000371971	-1.35527	16.1478	0.404915	0.066868	1
NCRNA00219	0.00443411	-1.35724	6.79617	0.386989	0.151846	1
CDKN1A	0.00643522	-1.3575	7.47552	0.489276	0.174535	1
CNKSR3	0.000755548	-1.35763	11.8324	0.373045	0.0840733	1
BAIAP2L2	0.00181141	-1.35858	9.16135	0.3848	0.112007	1
AKR7A3	0.00342655	-1.36118	9.6836	0.512409	0.141107	1
TRIB3	0.0101274	-1.36145	6.45752	0.514046	0.212278	1
ID2	0.0276121	-1.36149	3.0107	0.371825	0.329337	1
BMP2	0.000258674	-1.3669	13.1319	0.31229	0.0634159	1
MT1G	0.030306	-1.367	3.96207	0.525409	0.353625	1
LOC650515	0.000833997	-1.36751	9.34292	0.318437	0.0908886	1
TMEM106C	0.0151188	-1.36865	3.35437	0.326189	0.259315	1
PPFIBP2	0.00030168	-1.36875	20.7533	0.521085	0.0669562	1
SOX4	0.00525706	-1.3701	6.38785	0.411408	0.171746	1
TGFB3	0.000222326	-1.37087	16.1556	0.374259	0.0617756	1
MARCKSL1	0.0194441	-1.37192	3.40193	0.374975	0.293931	1

MGST3	6.33E-06	-1.37452	42.5645	0.37304	0.0233709	1
LOC124220	0.0112437	-1.37485	5.46171	0.482857	0.235754	1
HOXB7	0.000117225	-1.37675	18.3938	0.363539	0.0527046	1
SYTL1	0.0204229	-1.3781	4.33192	0.502142	0.309111	1
FAM167A	0.0102848	-1.37893	4.76631	0.414006	0.231629	1
SPINT2	0.00222094	-1.37996	7.84511	0.389764	0.132486	1
HBB	0.0164333	-1.38002	3.79058	0.40251	0.283165	1
TMEM132A	0.0281734	-1.38198	2.62632	0.359978	0.365508	1
TIGA1	0.00264854	-1.3829	10.0402	0.536798	0.142574	1
GPR56	0.000159323	-1.38945	17.5913	0.40197	0.0609348	1
TEAD2	0.00119516	-1.38974	8.62178	0.364444	0.112721	1
PCOLCE	0.0385339	-1.39014	2.86413	0.475986	0.443169	1
SLC9A1	0.00675845	-1.39175	5.38597	0.420076	0.207985	1
CMBL	0.00217818	-1.3934	11.0151	0.576897	0.139662	1
DBNDD2	0.00234655	-1.39365	7.66759	0.412302	0.143392	1
CLDN7	0.00205505	-1.39622	10.5835	0.55015	0.138618	1
CRIP2	0.0032777	-1.39684	6.84516	0.418923	0.1632	1
KAZALD1	0.000278509	-1.39847	16.3654	0.458048	0.074637	1
ID1	0.0035866	-1.4048	7.9688	0.520706	0.174248	1
C1ORF64	0.000335664	-1.40493	15.8333	0.481505	0.0810959	1
MEGF6	8.15E-06	-1.4053	36.352	0.389935	0.0286044	1
CYP1A1	0.0025196	-1.40861	7.74167	0.454418	0.156527	1
LOC340274	0.000953376	-1.41461	14.1735	0.618936	0.116449	1
TM4SF5	0.00399629	-1.41659	7.07283	0.504252	0.190118	1
LOC399965	0.00615872	-1.4192	6.03221	0.509462	0.225219	1
FAM84B	0.00523781	-1.42345	5.78753	0.468041	0.215655	1
SH3GLB2	0.00160481	-1.42692	10.2135	0.554673	0.144821	1
FLJ40504	0.00180029	-1.43143	12.0872	0.694095	0.153131	1
ERBB3	9.73E-05	-1.4339	20.6945	0.492749	0.0634951	1
ADM2	0.000383514	-1.43644	18.7493	0.673459	0.0957844	1
MARCKS	0.00861746	-1.43668	4.02694	0.41456	0.274524	1
TMEM125	2.86E-05	-1.44054	37.8396	0.656462	0.0462628	1
PRPH	0.00213604	-1.4414	10.1644	0.642322	0.168516	1
S100A16	0.000433875	-1.44268	12.7453	0.486659	0.101822	1
LOC440585	0.00314262	-1.44415	8.64876	0.630682	0.194458	1
SERPINF1	0.00767474	-1.44556	5.95085	0.60563	0.271392	1
RNASE1	9.73E-05	-1.45063	27.1068	0.687579	0.0676414	1
GPR177	3.15E-06	-1.45118	60.3772	0.602423	0.0266071	1
CA11	0.000353971	-1.45137	14.6877	0.544818	0.098916	1
NRP1	4.18E-06	-1.45229	51.3997	0.554966	0.0287922	1
C19ORF21	4.03E-05	-1.45229	28.7156	0.572394	0.0531552	1

LAMA5	0.0248843	-1.45281	3.51105	0.604625	0.459217	1
VIPR1	0.00012132	-1.45703	21.2767	0.588579	0.0737683	1
RAB3IP	0.000138066	-1.45728	19.2718	0.55384	0.0766356	1
MLPH	2.66E-05	-1.45942	47.4624	0.865338	0.0486188	1
JUP	0.0057439	-1.46624	5.64827	0.555323	0.262179	1
CRABP2	0.000961909	-1.46714	14.164	0.757518	0.142619	1
SDC4	0.0102265	-1.46902	4.49728	0.558398	0.331102	1
RDH5	0.000881998	-1.46917	10.3137	0.540512	0.139752	1
TJP3	0.000300836	-1.478	13.8407	0.53791	0.103638	1
AHNAK2	0.00977316	-1.47968	4.75175	0.60135	0.337476	1
FLJ10916	0.000730181	-1.48111	12.5765	0.64748	0.137289	1
CREB3L4	2.46E-05	-1.48148	29.1341	0.56225	0.0514632	1
PTH2	0.0076484	-1.48647	7.27121	0.855192	0.313636	1
GSTA2	0.00263022	-1.48648	10.3431	0.824885	0.212672	1
C8ORF13	0.00443679	-1.48703	8.19006	0.787101	0.256278	1
TGFBI	0.0214205	-1.48941	4.02733	0.73611	0.48741	1
LOC392871	0.00432192	-1.48972	6.04039	0.580263	0.25617	1
SNHG7	0.0101863	-1.49044	4.54452	0.606574	0.35593	1
HSPB8	0.00612702	-1.49651	6.6432	0.742523	0.298058	1
BMP7	0.00196455	-1.49653	8.53579	0.637613	0.199197	1
ALDH3A1	0.0035856	-1.49736	8.41286	0.775416	0.245788	1
CHRM1	0.000188706	-1.49911	19.2919	0.701707	0.0969952	1
FLJ22184	0.000154193	-1.50255	20.9939	0.728211	0.092498	1
PGAM2	0.0173066	-1.50264	3.63812	0.63162	0.462964	1
SELENBP1	0.0040332	-1.50467	6.62647	0.652412	0.262548	1
ALPPL2	0.000318459	-1.50639	13.9248	0.605371	0.115931	1
KIAA1671	0.00165862	-1.50665	8.23297	0.600831	0.19461	1
LUM	0.0336263	-1.51265	3.73096	0.913019	0.652571	1
EFNA1	0.000595979	-1.51779	10.5468	0.575245	0.145446	1
SSBP2	0.0152658	-1.5197	3.89364	0.676177	0.463099	1
IFNGR2	3.11E-05	-1.52504	25.6378	0.608111	0.0632515	1
LOC644743	0.000673823	-1.52702	11.0766	0.645946	0.15551	1
CBLN2	0.000226807	-1.53323	18.7127	0.800413	0.114064	1
DDAH2	2.53E-05	-1.53651	32.0773	0.745126	0.0619443	1
KRT8	0.000350867	-1.54273	15.8914	0.796367	0.133635	1
CD9	0.000396975	-1.56418	13.1969	0.730827	0.147677	1
C19ORF33	0.023951	-1.57139	3.37312	0.835467	0.660491	1
LOC728910	0.0162248	-1.57281	4.36443	0.911076	0.556668	1
P8	0.0192958	-1.58139	4.06916	0.938964	0.615337	1
LOC100134170	0.00321867	-1.58285	8.08138	0.927826	0.306161	1
PROM2	0.000773101	-1.59159	11.8328	0.868181	0.195655	1

IGFBP2	0.000616956	-1.59571	13.7993	0.954235	0.184403	1
LOC653499	0.00265122	-1.59612	8.59525	0.956315	0.296696	1
FAM113B	2.99E-05	-1.59652	31.1317	0.89802	0.0769223	1
SOX2	0.000760904	-1.59666	10.4382	0.772505	0.197354	1
MT1A	0.0120414	-1.59763	5.21499	1.02716	0.525233	1
MVP	0.000235593	-1.60537	18.1143	0.961181	0.141499	1
HMGCS2	4.00E-05	-1.61148	26.3935	0.857984	0.0866865	1
C10ORF27	0.0319127	-1.61265	3.12432	0.993118	0.847646	1
GSTA1	0.00435082	-1.61554	6.46765	0.90198	0.371894	1
MT1F	0.000408811	-1.61567	14.8488	0.954109	0.171347	1
CAMK2N1	0.00224716	-1.61865	8.40989	0.938047	0.297442	1
KRT18P13	0.00125645	-1.62302	11.0439	1.02729	0.248049	1
MB	0.000167216	-1.6381	18.7631	0.979025	0.139142	1
LGALS4	0.00250822	-1.63998	6.67191	0.815198	0.325823	1
C14ORF4	0.00446487	-1.64667	6.72356	1.02332	0.405863	1
LGALS7	0.00572556	-1.6539	6.2379	1.05878	0.452621	1
FOLR1	5.58E-05	-1.66099	27.8061	1.12177	0.107581	1
GDF15	0.0282679	-1.67108	3.3401	1.15512	0.922228	1
ASS1	4.24E-05	-1.68142	28.7955	1.12885	0.104539	1
GSTA4	0.00714907	-1.68702	5.34841	1.06673	0.531864	1
C17ORF28	8.50E-06	-1.69098	44.9563	1.16248	0.0689545	1
CD24	0.000243734	-1.69621	15.6953	1.04823	0.178097	1
ALG1L	0.000157	-1.70206	18.2661	1.08669	0.158646	1
LGALS7B	0.0132446	-1.71083	4.46354	1.2015	0.717817	1
MT2A	0.0122104	-1.72029	4.70704	1.25016	0.708249	1
GSTA3	3.66E-05	-1.72914	29.602	1.23669	0.111406	1
KIAA1324	7.79E-05	-1.73151	25.3907	1.31708	0.138326	1
CDH1	0.000192229	-1.73577	18.4717	1.25316	0.180912	1
KRT19	0.0015704	-1.74865	8.63566	1.15054	0.355285	1
SCNN1A	0.000132352	-1.76004	22.8801	1.46402	0.170631	1
ATP1B1	0.000143511	-1.76301	22.7257	1.49737	0.175704	1
PNPLA7	0.00028849	-1.76318	15.7044	1.27008	0.215665	1
NUPR1	0.014055	-1.77317	4.27311	1.34182	0.837375	1
GPNMB	0.000179343	-1.80085	20.6538	1.56255	0.201745	1
CAPS	3.77E-06	-1.84113	51.2755	1.44152	0.0749685	1
LOC387882	9.60E-05	-1.87876	23.0636	1.67472	0.193635	1
ZNF467	0.00121938	-1.90275	10.573	1.7186	0.433456	1
PRSS23	0.0101445	-1.90499	4.59195	1.59584	0.926749	1
ABCC3	1.45E-07	-1.95032	110.227	1.59176	0.0385086	1
ALDH1A3	0.00306315	-1.96769	7.80852	1.91409	0.653675	1
C1ORF115	4.93E-06	-1.99742	49.821	1.9321	0.103415	1

IGFBP3	2.08E-07	-2.00474	109.12	1.87564	0.0458367	1
TSPAN1	0.000644243	-2.01438	10.4981	1.65233	0.419718	1
TOB1	0.00108597	-2.02797	9.84653	1.86251	0.504411	1
MGP	0.00390921	-2.06028	7.88107	2.40165	0.812632	1
TNFRSF21	6.44E-05	-2.08403	22.6829	1.99516	0.234557	1
ALDH3A2	0.0174888	-2.12544	4.2072	2.51551	1.59442	1
C9ORF152	0.000228296	-2.22537	16.9633	2.54682	0.400364	1
LFNG	2.99E-06	-2.39135	58.2604	3.14477	0.143941	1
SCGB1D2	0.017697	-2.41984	4.51255	3.7257	2.20168	1
NR2F1	3.73E-05	-2.49957	26.5025	3.1155	0.31348	1
ID3	0.000108394	-2.79804	19.3999	3.88291	0.533735	1
TWIST1	1.50E-06	-2.8137	62.1753	3.94378	0.169147	1
PRODH	7.65E-07	-2.87544	72.8061	4.03761	0.147886	1
SCGB2A2	0.0117456	-3.00459	5.0608	5.43987	2.86641	1
<b>Genes up-regulated by AR variants in CWR-R1 cells transfected with siRNAs targeting AR exon 1 vs. AR exon 7</b>						
Probeset ID	p-value(siARExon7 vs. siARExon1)	Fold-Change(siARExon7 vs. siARExon1)	F(Treatment )	SS(Treatment )	SS(Error)	F(Error )
NPTX2	3.92E-06	3.68331	74.026	9.59595	0.345678	1
APOD	0.000156079	3.03322	29.7539	7.69231	0.689416	1
FOSB	0.0229884	1.77893	6.78519	2.67821	1.05257	1
C20ORF134	0.0188557	1.76078	5.91246	2.05777	0.928106	1
FLJ35767	0.0132673	1.70458	6.0499	1.60757	0.70858	1
IL12A	0.00018406	1.52885	27.8329	1.10491	0.105861	1
CAMKV	0.0304333	1.52226	4.04692	0.97157	0.640203	1
TMEM145	0.00362716	1.5218	8.95706	0.896796	0.266991	1
CSRNP2	0.0248431	1.44072	4.0427	0.664862	0.43856	1
NFE2L1	0.0379217	1.41858	3.49827	0.649631	0.495202	1
FSCN1	0.0403215	1.41697	4.10848	0.782625	0.507974	1
UNC119	0.00578944	1.40844	8.75346	0.691285	0.210594	1
GNPDA1	0.00222167	1.39344	12.3088	0.649078	0.140621	1
LRRC8A	0.0258392	1.37538	10.1749	1.29883	0.340401	1
HEY1	0.0241776	1.35489	4.5152	0.507269	0.299592	1
NRBP2	0.00395238	1.35162	6.59326	0.350476	0.141751	1
JAM3	0.0454343	1.34512	2.62134	0.385087	0.391745	1
DUSP3	0.0324714	1.33968	2.78927	0.334892	0.320172	1
SRP68	0.0162508	1.33098	6.42592	0.535073	0.222048	1
BHLHB2	0.0072524	1.33074	25.8845	1.54972	0.159654	1
ALDOC	0.0212065	1.32869	6.57293	0.608606	0.246914	1
ELAVL1	0.0246166	1.32036	5.86853	0.556662	0.252948	1
ACLY	0.037078	1.31674	3.31308	0.376624	0.303141	1

GAGE12C	0.0499085	1.31671	3.20513	0.426909	0.355188	1
INSIG1	0.0274392	1.30547	5.98092	0.549513	0.245007	1
STK39	0.0297507	1.30432	7.48716	0.710647	0.253108	1
AGT	0.00270182	1.29234	8.17705	0.275473	0.0898363	1
LONRF1	0.0144737	1.28517	16.8755	1.02951	0.162682	1
PROCR	0.019772	1.27797	4.25545	0.284345	0.178184	1
SNCA	0.00472685	1.27489	8.98231	0.330952	0.0982529	1
CYP27B1	0.0256534	1.27039	4.44269	0.318661	0.191272	1
SFXN1	0.0336174	1.26436	2.34717	0.184481	0.209593	1
NT5DC3	0.0460989	1.25298	20.103	1.72229	0.228462	1
PDCD4	0.00148145	1.24993	19.2455	0.400858	0.0555431	1
SLC31A2	0.00539321	1.24954	6.73871	0.219309	0.0867857	1
ALAS1	0.0435645	1.24913	3.56822	0.28849	0.2156	1
ACOT7	0.046092	1.24536	5.34559	0.433497	0.216252	1
CD164L2	0.0494376	1.24484	4.80443	0.403338	0.22387	1
PEG10	0.0190778	1.2439	6.88766	0.358607	0.13884	1
NFYA	0.0186035	1.2404	5.21469	0.261602	0.133777	1
GSTM1	0.0240796	1.23849	5.41602	0.301203	0.148302	1
RNU6-15	0.0384087	1.23792	2.68288	0.186859	0.185729	1
FKBP5	0.0482986	1.23194	84.2781	6.33616	0.200484	1
MED30	0.0163048	1.22969	4.36839	0.190493	0.116286	1
LRP8	0.0147108	1.22965	5.19538	0.216692	0.111223	1
SLC2A12	0.0128015	1.22632	4.63683	0.17763	0.102156	1
ELF3	0.0176265	1.22529	9.01751	0.392879	0.116183	1
ULBP2	0.0232297	1.22501	4.16849	0.205243	0.131298	1
PAICS	0.039816	1.22373	4.00725	0.2545	0.16936	1
SLC25A4	0.00432368	1.22323	12.1918	0.299338	0.0654729	1
THBS1	0.0113489	1.22101	7.98566	0.278812	0.0931041	1
IRS2	0.00973364	1.21649	9.2998	0.293911	0.0842772	1
PDIA5	0.0397258	1.21454	9.26447	0.544632	0.156766	1
LOC387763	0.00926292	1.21406	12.3472	0.374826	0.0809521	1
MEF2D	0.0312234	1.21315	3.19878	0.164441	0.137086	1
HS.582526	0.00962906	1.20697	4.62489	0.1341	0.0773205	1
MLX	0.0473073	1.20101	3.05695	0.175213	0.152843	1
CDC42EP2	0.0422471	-1.20008	5.59872	0.299346	0.142578	1
SARS	0.00764572	-1.20067	8.41153	0.210538	0.0667459	1
LOC647436	0.00182389	-1.20182	9.88796	0.149809	0.0404018	1
CD9	0.0434272	-1.20233	13.1969	0.730827	0.147677	1
IGSF9	0.0300475	-1.20298	5.48216	0.25299	0.123061	1
FLJ10916	0.0373263	-1.20305	12.5765	0.64748	0.137289	1
C2ORF79	0.00407883	-1.20547	8.74879	0.180913	0.0551432	1

C1ORF64	0.0111944	-1.20548	15.8333	0.481505	0.0810959	1
LOC390557	0.0175923	-1.20593	5.26859	0.194793	0.0985933	1
PRDM8	0.00834572	-1.20653	11.1476	0.304283	0.0727888	1
LOC346950	0.00397147	-1.20715	5.88639	0.12237	0.0554361	1
SH3GLB2	0.0373035	-1.20912	10.2135	0.554673	0.144821	1
CIB2	0.040609	-1.20925	5.65344	0.321262	0.151536	1
VIPR1	0.00811547	-1.2093	21.2767	0.588579	0.0737683	1
FAM108C1	0.00603078	-1.21108	16.1478	0.404915	0.066868	1
LOC100133328	0.0240931	-1.21247	7.52658	0.339678	0.120348	1
CHST15	0.00194298	-1.21574	11.2291	0.196229	0.0466001	1
DKK3	0.000960304	-1.21602	26.2701	0.365599	0.0371117	1
CLDN3	0.0161007	-1.22151	4.93547	0.200456	0.108307	1
TIMM10	0.0375553	-1.2236	2.85989	0.176013	0.164121	1
LPAR5	0.0199587	-1.22468	5.70451	0.261372	0.122182	1
A2LD1	0.00281889	-1.22469	7.36056	0.157177	0.0569439	1
LOC100132717	0.0228325	-1.22482	4.95955	0.241885	0.130057	1
HIST1H2BK	0.0267734	-1.22825	5.7451	0.310337	0.144047	1
B3GNT1	0.015751	-1.22981	6.28075	0.270084	0.114671	1
ZNF837	0.0249236	-1.23114	3.84114	0.205173	0.142439	1
LANCL2	0.0132031	-1.23116	5.6729	0.228721	0.107515	1
PRAGMIN	0.00660192	-1.23224	8.32482	0.25683	0.0822696	1
ID1	0.0367015	-1.23265	7.9688	0.520706	0.174248	1
HNRNPA0	0.0290863	-1.23342	4.85512	0.284189	0.15609	1
C19ORF21	0.00186906	-1.23368	28.7156	0.572394	0.0531552	1
TLE1	0.0336897	-1.23763	5.36793	0.348918	0.173335	1
TMEM79	0.0134838	-1.23997	5.04395	0.219486	0.11604	1
HMGCS2	0.00625569	-1.2418	26.3935	0.857984	0.0866865	1
ATP6V0E2	0.00573956	-1.24485	11.8167	0.380387	0.0858415	1
C1ORF53	0.012692	-1.2505	8.12525	0.372364	0.122208	1
MB	0.0168336	-1.25183	18.7631	0.979025	0.139142	1
LOC389816	0.0167034	-1.25416	4.4218	0.233772	0.140981	1
PRMT6	0.0411402	-1.25697	4.73519	0.392545	0.221066	1
CAPS	0.00294816	-1.25955	51.2755	1.44152	0.0749685	1
ZBTB42	0.0198642	-1.26372	6.70593	0.408891	0.162598	1
TNFRSF21	0.0407956	-1.2663	22.6829	1.99516	0.234557	1
MT1F	0.0206399	-1.26897	14.8488	0.954109	0.171347	1
FAM136A	0.0385671	-1.26954	2.5633	0.2237	0.23272	1
POLR2L	0.0164873	-1.27176	6.99421	0.414311	0.157963	1
TRIB3	0.0302818	-1.27412	6.45752	0.514046	0.212278	1
PSCA	0.0148045	-1.27433	5.24278	0.30149	0.153349	1
CHRM1	0.00422523	-1.27924	19.2919	0.701707	0.0969952	1

DYNLL1	0.0298593	-1.27928	3.36543	0.275022	0.217919	1
KRT8	0.00974294	-1.27982	15.8914	0.796367	0.133635	1
FOLR1	0.00534994	-1.28198	27.8061	1.12177	0.107581	1
SLPI	0.0200907	-1.28346	5.41196	0.377055	0.185788	1
GSTA3	0.00536325	-1.28746	29.602	1.23669	0.111406	1
LOC388564	0.00902696	-1.28818	7.83618	0.401324	0.136571	1
CLDN7	0.00913333	-1.28986	10.5835	0.55015	0.138618	1
C11ORF80	0.00129074	-1.29074	11.986	0.312347	0.0694917	1
FLJ22184	0.00301421	-1.29089	20.9939	0.728211	0.092498	1
AKR7A3	0.00910645	-1.29299	9.6836	0.512409	0.141107	1
GSTA2	0.0229884	-1.29553	10.3431	0.824885	0.212672	1
MMP10	0.0154419	-1.29714	7.29008	0.491637	0.179838	1
C17ORF28	0.00111574	-1.29729	44.9563	1.16248	0.0689545	1
CAMK2N1	0.0432565	-1.29924	8.40989	0.938047	0.297442	1
C1ORF115	0.00348662	-1.30104	49.821	1.9321	0.103415	1
KRT18P13	0.0295819	-1.30132	11.0439	1.02729	0.248049	1
ASS1	0.00355931	-1.30164	28.7955	1.12885	0.104539	1
PNPLA7	0.020948	-1.30519	15.7044	1.27008	0.215665	1
ALDH3A1	0.0274631	-1.30595	8.41286	0.775416	0.245788	1
ETS1	0.0194391	-1.31778	3.89163	0.326637	0.223822	1
TMEM125	0.000199305	-1.31968	37.8396	0.656462	0.0462628	1
KIAA1324	0.00564776	-1.32162	25.3907	1.31708	0.138326	1
LOC340274	0.00349726	-1.32195	14.1735	0.618936	0.116449	1
FLJ40504	0.00720201	-1.32341	12.0872	0.694095	0.153131	1
ADM2	0.00184164	-1.32657	18.7493	0.673459	0.0957844	1
MVP	0.00497518	-1.33473	18.1143	0.961181	0.141499	1
LRRC26	0.00552524	-1.34892	7.24953	0.429702	0.158061	1
HEBP2	0.00570156	-1.36557	9.03569	0.587204	0.173299	1
KLK11	0.0488535	-1.37646	2.69394	0.478226	0.473384	1
C10ORF116	0.0335648	-1.38331	3.64107	0.547206	0.400766	1
GPNMB	0.00624908	-1.39158	20.6538	1.56255	0.201745	1
MT1X	0.0486692	-1.40585	4.18004	0.841649	0.536932	1
IGFBP3	4.55E-05	-1.40606	109.12	1.87564	0.0458367	1
TWIST1	0.00282283	-1.41799	62.1753	3.94378	0.169147	1
MLPH	4.38E-05	-1.42299	47.4624	0.865338	0.0486188	1
PRODH	0.00144588	-1.4412	72.8061	4.03761	0.147886	1
NR2F1	0.0113011	-1.44298	26.5025	3.1155	0.31348	1
ID3	0.0281163	-1.47865	19.3999	3.88291	0.533735	1
C9ORF152	0.0109972	-1.517	16.9633	2.54682	0.400364	1
LFNG	0.000218976	-1.62026	58.2604	3.14477	0.143941	1