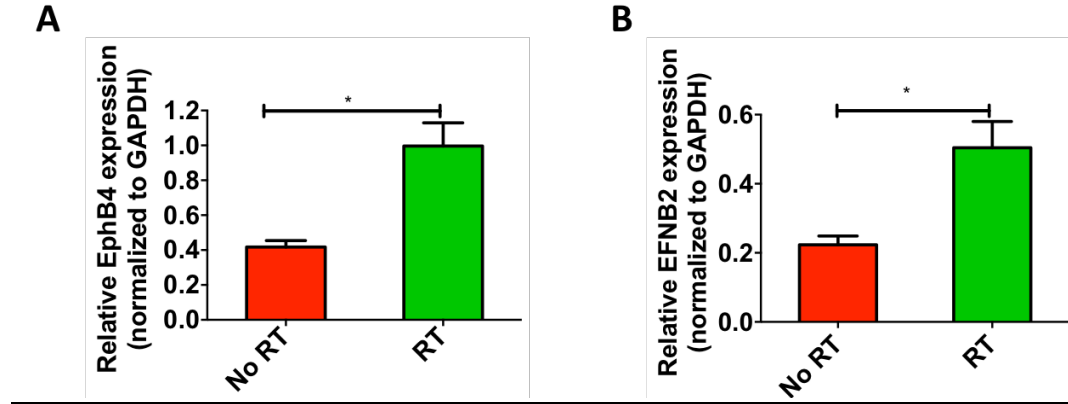
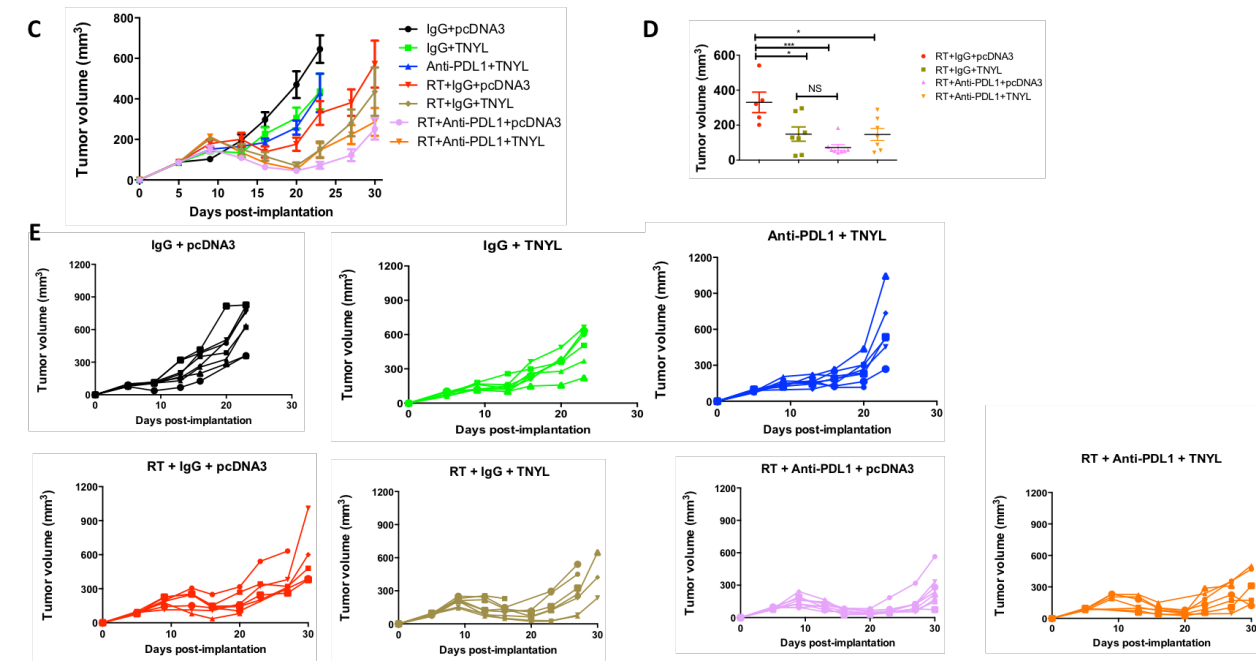


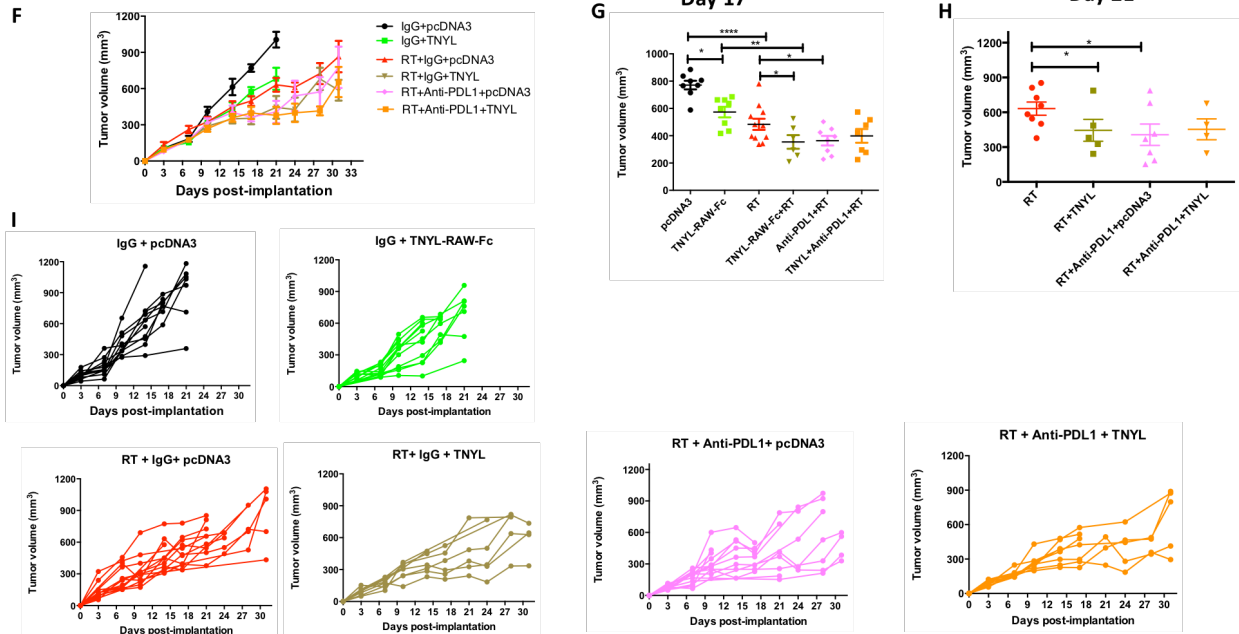
Supplementary Figure 7



Ly2



Moc2



Supplementary figure 7. Blockade of EphB4-ephrin-B2 interaction combined with RT suppresses tumor growth in HNSCC tumors. qPCR analysis performed on Ly2 tumors show elevated mRNA levels of both EphB4 (A) and EFNB2 (B) following 10 Gy dose of RT exposure. Inhibition of EphB4-ephrin-B2 interaction by TNYL-RAW-Fc plasmid (20 µg/2 ml PBS/mouse) enhances radiosensitivity of Ly2 (C-E) and Moc2 (F-I) tumors to RT (10 Gy). The dot plot compares tumor volumes between irradiated groups on day 23 post-tumor implantation for Ly2 tumors (D) and on day 17 (G) and day 21 (H) for Moc2 tumors. Tumor volumes of individual mice within a group are represented by spaghetti plots (E, I). One-way ANOVA was used to calculate the significance of the differences between groups. Data represent mean ± SEM. *p<0.05, **p=0.001-0.01, ***p=0.0001-0.001.